

SCHEDULE OF SERVICES

Saturday, February 1

10:30 am Shabbat Service

Bar Mitzvah: Bennett Lavine

5:30 pm Shabbat Service

Bar Mitzvah: Henry Leventhal

Sunday, February 2

10:45 am Sunday Minyan

Friday, February 7

Shabbat Across Beth Ami

No Services at Temple

Saturday, February 8

10:30 am Shabbat Service

Bar Mitzvah: Jake Dorfman

10:30 am Shabbat Chapel Service

Sunday, February 9

10:45 am Sunday Minyan

Friday, February 14

6:30 pm Tot Shabbat

7:30 pm Erev Shabbat Service

Saturday, February 15

10:30 am Shabbat Service

B'nai Mitzvah: Reece Balamaci

Ryan Schwartzman

Sunday, February 16

10:45 am Sunday Minyan

Friday, February 21

6:30 pm Spirit of Shabbat

Saturday, February 22

10:30 am Shabbat Service

Bar Mitzvah: Mitchell Golub

5:30 pm Shabbat Service

Bar Mitzvah: Evan Burgess

Sunday, February 23

10:45 am Sunday Minyan

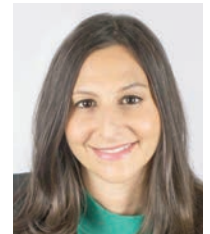
Friday, February 28

6:30 pm Primary K - 2 Shabbat

CONTINUED ON PAGE 17

MESSAGE FROM

Rabbi Weiss



Growing up in New York City, I never felt that I had to keep my Jewish identity a secret. While Jews were always technically a minority, I always felt connected to the larger community. Despite some alienation during the December holidays and a High School prom planned on Shabbat, my Judaism was not something I felt I had to conceal.

Each year when we read the Purim story of Queen Esther and Mordecai, it was hard for me to connect with a world in which Jews had to hide their identities. We learn that Esther's lesser known Hebrew name was Hadassah and she was not easily identified

as a Jew, so much so that her husband, King Achashverosh knew nothing about this identity - I guess that means they didn't have a Jewish wedding?

Her cousin Mordecai, on the other hand, wore his religion outwardly. He had a Jewish name, refused to bow down to Haman, and looked stereotypically Jewish. For publicly identifying as Jewish, his life, along with all other identifiable Jews, becomes endangered.

When I sat down to write this Chadashot article, the news had been filled with the recent anti-Semitic attacks in New York during the week of Hanukkah including in Monsey, which followed another hate crime in New Jersey. According to a New York blog, in "The City" there has been a 23 percent spike in anti-Semitic hate crime complaints this year. According to

CONTINUED ON PAGE 19

Purim is Coming



Purim Celebrations

March 8 & 9

See pages 9 and 18 for details.

TABLE OF CONTENTS

President's Message	2
This Month	3 - 4
Executive Director	4
Tikkun Olam	5
Brotherhood	6
Simchas	6
Women of TBA	7
TBANS	8
B'nai Mitzvah Profiles	9
Purim Shpiel	9
Machane TBA	10 - 11
Annual Appeal Donors	12 - 13
Photo Review	14 - 15
Committees	16 - 17
Coming in March	18
Sunshine	20 - 21
Memorium	22
Ongoing	23 - 25

Chadashot

Published monthly by
TEMPLE BETH AMI
MEMBER

UNION FOR REFORM JUDAISM
14330 TRAVILAH ROAD
ROCKVILLE, MARYLAND 20850-3527

TEMPLE OFFICE 301.340.6818
FAX 301.738.0094

www.bethami.org

HOURS:
MON-THURS 9:00 AM - 6:00 PM
FRI 9:00 AM - 3:00 PM
SAT CLOSED
SUN CLOSED

RELIGIOUS SCHOOL 301.340.8335
FAX 301.610.6239
NURSERY SCHOOL 301.762.5594
FAX 301.610.5827
BROADCAST SYSTEM 301.309.3834
LIVE STREAMING WWW.BETHAMI.ORG

MESSAGE FROM *Buzz Karpay, President*



Open your calendar and reserve December 8-11, 2021. That's when the URJ Biennial will be in Washington.

Lynn and I attended this year's Biennial in Chicago in December. As we were preparing for the trip, we were going over the schedule to see which sessions we wanted to attend together, and which ones made more sense for us to attend separately. It quickly became apparent that there is no way we could attend everything we wanted because there's only so much you can do in four days.

There were literally hundreds of sessions, and many of them seemed interesting enough to entice me to tentatively put them on my schedule. I quickly found that I had double- or triple-scheduled time blocks and began the process of narrowing down the field. There is no way I can cover even a significant amount of what we did at the Biennial, but here are just a few of the highlights.

We both attended a session that was being led by Dr. Andrew Rehfeld, the new President of Hebrew Union College. The title of the session that drew us both in was "The Beatles and the Intersectionality of Jewish Philanthropy, Civic Responsibility & Synagogues." Dr. Rehfeld started the session by analyzing the lyrics of the Beatles' song, "She Loves You," and was able to get most of the room to join in singing with him. Looking at a song like that through a Jewish lens was fascinating, and in the future, I will seek out sessions being taught by Dr. Rehfeld.

I attended a congregational presidents' meeting, where I renewed friendships that were formed when I attended a seminar for incoming presidents more than two years ago, and made several new friends. That was followed by a reception held by the Religious Action Center for winners of their Fain Award. Thanks to our Tikkun Olam Committee, Beth Ami was one of the winners of that award, and those in the room were impressed by what we had been able to accomplish.

Plenary sessions were always full of great speakers, presentations, entertainment, and music. Many of the plenary sessions are now online at urjbiennial.org. The song sessions at the end of most plenary sessions were always engaging, with leaders in the Jewish music world leading the sessions. This photo was taken at one such session.



Music wasn't limited to plenary sessions. We went to see or hear several different music and comedy groups, generally as late evening programs. All the learning sessions, plenary sessions, and music led up to Shabbat, which was incredible. Thousands of Jews praying and celebrating Shabbat

CONTINUED ON PAGE 16

COMING

This Month**Brotherhood Brunch with Pasha Palankar Sunday, February 2****9 - 10:30 am**

TBA member, US Army Combat Veteran and 2-time Purple Heart Recipient, Pasha Palankar, will join us and share his story of recovering from PTSD and TBI issues. As he learned how to rebuild his identity, he made a commitment to help others struggling with PTSD, depression and other “invisible” injuries to rebuild themselves, Brick by Brick. Register online. \$30 – guests; \$20 Members of Brotherhood/WTBA; FREE for gold members.

**Live & Learn with Rabbi Weiss****Tuesdays, February 4, 11, 18****10:30 am – 12 pm**

Join Rabbi Weiss for a Purim-themed series: Living with Dual Identities: A Fresh Look at the Purim Story. Esther's hidden Jewish identity and Mordechai's outward identity. “Closeted” and “Out” Jews. The struggle we American Jews have! How much do we “out” our identities? In this age of growing anti-Semitism, how is our Jewish identity impacted and shaped? All are welcome; no fee.

**Big Challah Bake****Thursday, February 6****7 - 9 pm**

Temple Beth Ami is excited for its first ever community-wide CHALLAH BAKE! With nearly 100 bakers filling the social hall, we expect the sweet smell of challah baking will make its way into many of your homes! We look forward to making this an annual event!

**Shabbat Across Beth Ami****Friday, February 7****Dinner time**

We're changing it up in February! In place of a typical Friday evening at Beth Ami, our congregants will **HOST or BE HOSTED** at Shabbat potluck dinners in homes across town, where they can welcome Shabbat by singing along with our clergy's pre-recorded Shabbat Blessings. Share your Shabbat Across Beth Ami photos on Facebook: #Shabbat AcrossBethAmi.

**WTBA Mah Jongg Tournament****Sunday, February 16****9:15 am**

WTBA invites all mahj players for a day of play! Two options: mini tournament (concludes after lunch) - \$20 (members); \$25 (guests) - or regular tournament (over approximately 4 pm) - \$45 (members); \$50 (guests). Register by 2/6: online or with form on flyer (in Temple lobby). Contact Rachel Maryn with questions: rmaryn@verizon.net .

COMING This Month

HERE ALL ALONG

FINDING MEANING,
SPIRITUALITY, AND A
DEEPER CONNECTION
TO LIFE – IN JUDAISM
(After Finally Leaving the Job Hunt)
Sarah Hurwitz



Book & Author Event: Sarah Hurwitz

Wednesday, February 26

7 pm

Join Rabbi Weiss for an intimate conversation with Sarah Hurwitz, author and former speechwriter for President and Michelle Obama. Books will be available for purchase and signing and light refreshments will be served. This event is in conjunction with the Jewish Book Council. No charge.

Jewish Disability
Awareness Month
From Awareness
to Inclusion



Jewish Disabilities & Awareness Shabbat Friday, February 28

7:30 pm

Temple Beth Ami's Inclusion Committee invites you for an evening of inspiration and education on Disabilities Awareness and Inclusion on Friday, February 28th at 7:30 pm. We are extremely honored to welcome as our guest speaker, Mr. Jim Schmutz, President and CEO of Special Olympics Maryland (SOMD). Jim and his staff engage with over 6,300 volunteers annually to deliver year-round sports training and competition in 27 sports to children and adults with intellectual disabilities. Please join

us before services at a 6:30 pm Potluck Shabbat Dinner and welcome Jim and his wife, Deirdre. \$10 pp; pre-registration online by 2/25 is a must. See Temple website for details.

MESSAGE FROM THE EXECUTIVE DIRECTOR

Debbie Ezrin



As I begin my third month of service at Temple Beth Ami, staffing has been a significant focus for me and our entire team.

You may know that two of our longest serving staff – clergy assistant Susan Neumann and Machane registrar/office manager Bobbie Chait – retired at the end of December. We are grateful to both for their extraordinary service to our congregational community and their support during the transition to new people in those roles. We also bid farewell to Irene Papamanolis who left TBA at the end of November after many years of wonderful service in our administrative office.

In early January, we welcomed two amazing people to join our staff:

- Jennifer Smith is Machane TBA's Office Manager. Jennifer has a strong background working in Jewish organizations, including the Bender JCC and the Jewish Federation of Greater Washington. She is also a member of TBA with two children that attend Machane, so she is especially excited about contributing to the Machane team.
- Rachel Kessler is our Administrative Assistant and will be located at the front desk in the main office. Rachel became a Bat Mitzvah at TBA and remained in Machane through confirmation and the 12th grade high school program. Though her family are no longer members, she is passionate about the impact TBA made on her life and is excited to share her enthusiasm with others.

As I write this article, we are actively interviewing to replace Susan Neumann and will update the congregation when her replacement is hired. Thank you in advance for helping us give a warm welcome to our new staff members.

Please know how important it is for me to get to know each and every one of you and learn how Temple Beth Ami can meet your needs. Please contact me at 301-340-6818 or to set up a meeting or stop by my office the next time you're in the building.

Thank you for your continued partnership in helping Temple Beth Ami fulfill its core purposes – Embracing Judaism, Fostering Connection, and Encouraging Innovation.

TIKKUN OLAM

Community Service Projects



LEND A HAND

Temple Beth Ami Community Service Projects

Thank you in advance for your support!

(For information on additional TBA community service projects, visit bethami.org/groups/TO.)

VOLUNTEERS NEEDED

- **New Program for TBANS Families: Tikkun Olam Together** - TOTs in Action will support Community Reach of Montgomery County's Citizenship, English Conversation, and English as a Second Language classes for adults in Rockville by donating 25 snack bags each month for the children of the adult students in these classes. **Snack contributions can be made throughout the month; bags will be assembled on the last Friday of the month. For more information or to volunteer, contact Kate Wernick at kateraisescoin@yahoo.com.** (Sponsored by the TBANS community and TBA's Tikkun Olam Committee.)
- **Help at Nourish Now**- TBA volunteers help sort/pack food for distribution to local needy families on the 3rd Monday of the month, 10 am– noon, at Nourish Now in Rockville. Contact Arlynn Joffe at arlynnjoffe@gmail.com for more information or to be added to the list of those contacted to see if they may be available to help.

COLLECTIONS**THANK YOU FOR SUPPORTING THESE DRIVES!**

- **Grab 'n Go Collection (formerly "Stuff-a-Duff")** - Donate full-size personal care items (shampoo, deodorant, soap, body lotion) and baby items (baby shampoo, baby

lotion, sippy cups, new onesies/pjs for ages 1–18 months & new infant socks) for Montgomery County Child Welfare Services clients who face challenges, including lacking funds for basic items. A box will be in the Temple lobby from February 1 – 24.

- **Ongoing Food Drive** - Please bring cans (preferably 12 oz. or larger) of tuna, chicken, or salmon (no Spam, please) and fruits in 100% juice (not in syrup, please) to the box in the Temple lobby. The collection benefits families served by the Manna Food Center and Nourish Now.
- **Box Tops for Education Is Changing** - Support needy students at South Lake ES (or other school of your choice) by downloading the new Box Tops mobile app from btfe.com & selecting a recipient school. As companies switch to the new system, we'll still collect the old hot pink labels as long as they're not expired. Bring any unexpired pink labels to the collection boxes in the Temple lobby, Religious School Office, & Nursery School Office. Questions? Contact Bernard Silverstein at cynbern@verizon.net. (Note: Please do not bring in the new turquoise labels that say "No More Clipping/Scan Your Receipt" on them. The schools cannot use them.)

IN THE COMMUNITY

- **Become a Mentor and Transform the Life of a Young Adult** - Future Link is seeking mentors for first-generation-to-college, low-income students (age 18–25) committed to overcoming the challenges they face. Mentors work one-on-one with a student on time management, study skills, resume development, interview skills, career exploration, and more. For more information, visit www.futurelinkmd.org or contact Allison Reznick at 202-302-2234 or areznick@futurelinkmd.org.

**APRIL CHADASHOT
DEADLINE FEBRUARY 25**

BROTHERHOOD News

Dear Brothers and TBA Members,

2020 is going to be a great year! To recap on 2019, the Brotherhood had some great events on top of the Chesed and Tikkun Olam that we continually strive for. Some of the fun things that happened in 2019:

- Fun and interesting Brunches
- Washington Capitals Hockey
- Movie Nights
- Summertime BBQ
- NFTY Breakfast
- And lots of Bagels and Coffee during Sunday Machane.

Speaking of movie nights, we showed the original "Star Wars - A New Hope", episode four. This much I can say, the



new screen that TBA purchased made for a great movie experience! We had around 30 confirm but less than half show for the movie. Consequently, everyone was able to go home with their own Potomac Pizza courtesy of the Brotherhood! Let's get more to the movie next time!

I am excited to announce the first **Brotherhood Brunch for 2020 will be Sunday, February 2 - 9 - 10:30 am.**



The presenter is Pasha Palanker, TBA Brother; and the title of his presentation is "Brick by Brick - Build Your Identity." Pasha is a US Army combat veteran, 2-time Purple Heart recipient. As a result of emotional battlefield wounds, Pasha used self-destructive behavior for a decade while running from PTSD and TBI issues. While he was recovering from physical wounds, he was struggling with invisible (mental) wounds. Over time, he learned how to rebuild his identity and now is now helping those who are struggling with PTSD, depression and other invisible injuries as they rebuild themselves.

We all love Pasha, and here's our opportunity to hear his dramatic and life changing story. Please come to see, hear, and support Pasha: \$30 for guests, \$20 for Members



of Brotherhood or WTBA, or FREE for Gold Members.

We're looking at organizing a Wizard's game, and our illustrious Treasurer Matt Rosenstock suggested a springtime event "Brews with Bros." Stay tuned for details.

I am looking forward to having fun with everyone this spring.

Steve Roberts

TBA Brotherhood President

SIMCHAS

Mazel Tov to:

Sidney Chaikin on becoming a Bat Mitzvah
Isaac Ginsburg and Gabriel Dashoff each on becoming a Bar Mitzvah

Janet and Mark Wallace on the birth of their grandson,
Roman Jacob Wallace
Heather, Elon, Jake and Ethan Walter on the birth of their son and brother, **Samuel Jordan**

Ellen and Bill Sternberg in honor of their daughter **Lauren's** engagement, to **Joshua Levy**
Our **Gimel students** for receiving their siddurs and their families

Special Thanks To:

Our **Shabbat Hospitality Committee, Challah Club, Cookie Brigade**

WOMEN OF TEMPLE BETH AMI

News

WTBA Book Club

The WTBA Book Club will meet at the Temple on Tuesday, February 4 from 7:30 pm - 9 pm. The group will discuss The Secret Cord by the Pulitzer Prize winning author, Geraldine Brooks. We hope to see you there! For more information about the WTBA Book Club or to join the email list, please contact Terry Steinberg at steinberg_4@comcast.net.

The WTBA Book Club, Temple members, and the community enjoyed a very special evening on December 3 with author Ronald Balson who shared information about his writing career and novels, including his most recent novel The Girl from Berlin. Thank you to Rabbi Weiss for inviting him to Beth Ami and for Terry Steinberg and Jeanne Kahn for helping to coordinate the evening!

Mah Jongg Tournament

The semi-annual Mah Jongg tournament will be held on Sunday, February 16 at Beth Ami from 10 am - 4 pm. There are two ways to play:

The Mini Tournament includes three 50-minute rounds with 3 games per round and a cash prize for the highest score. It will conclude after lunch. The registration fee is \$20 for Temple members and \$25 for guests.

The Regular Tournament includes six 50-minute rounds with 4 games/round. There will be high round prizes and cash prizes for the three highest scores. The registration fee is \$45 for Temple members and \$50 for guests.

Both tournaments will feature a continental breakfast, deli lunch with homemade desserts, and door prizes. Look for the flyer

in the Temple lobby and information on the Temple website for more information and to register.

Purchase your 2020 Mah Jongg cards through WTBA and support all the good work the Sisterhood does for the Temple and the Jewish community. Cards will be sent to you from the National Mah Jongg League at the end of March. Please pick up an order form in the Temple lobby or contact Rachel at rmayn@verizon.net for all things Mah Jongg!

Purim Cafe

WTBA once again will host the Purim Café on Sunday, March 8 from 11 am - 1 pm to coincide with the Purim Carnival at the Temple. Stop by and have lunch with your Temple friends! Volunteers will be needed to help with set-up, clean-up, and to serve food. Please contact Linda Burka at lnburka@gmail.com if you would like to help.

Days for Girls Meeting

Please plan to join us at the next Days for Girls meeting on Sunday, March 22 from 2 pm – 5 pm at the Temple. There will not be a chapter meeting in February. Volunteers who are not Temple members are welcome to attend our meetings. Contact the Chapter Leaders, Janet Schiller and Rhona Arbit, at rockvillemd@daysforgirls.org for more information or to RSVP for the March meeting.

Manna Food Center

A large group of Temple members sorted food at the newly renovated Manna Food Center warehouse on December 3. Thanks go out to Susan Bloom, Stephanie Fleischer, Daniel Fleischer, Nancy Yarvin, Michael Yarvin, Ellen Harrison, Scott

Harrison, Lynn Stander, Dave Stander, Brian Gaynor, Rebecca Reiser, Michael Reiser, Jacob Reiser, Carol Bahr, Jen Leibowitz, Izzy Leibowitz, David Gavin, Ed Prystowsky, David Landsman, and Bob Fogel for helping with this. As always, a huge thank you to Rhonda Gaynor for organizing the group for sorting food at Manna!

Pre-school Hanukkah Party

The pre-school Hanukkah party held on December 15 at the Temple was a big success! We had 15 enthusiastic preschoolers who enjoyed a holiday party with songs, crafts, and stories. A huge thank you to Bari Handleman who led all of the wonderful activities. Thank you to Amy Scher and Judy Fox-Tepper for organizing the Hanukkah pre-school party with TBANS. We look forward to another fun party next year!

MAJYK Dinner

WTBA provided Shabbat dinner for the approximately 180 6th-8th graders and supervisory staff of the Mid-Atlantic Junior Youth Kallah (MAJYK) on December 6. We were very excited to be part of this special weekend and to be able to host the dinner for all those in attendance. Thank you very much to the volunteers who coordinated the dinner and provided dessert: Jeanne Kahn (chair), Melissa Bauman, Helene Casper, Shari Davidson, Flora Feldman, Jackie & Michael Manis, Sue & Gil Sailer, Robin Temin, and Elise Ward.

A huge thank you to Lori Fein and the rest of the TBA family (staff and congregants) for hosting the MAJYK event. It was a huge undertaking, but it was wonderful to see so many young

CONTINUED ON PAGE 18

NURSERY SCHOOL NEWS

*Paula Sayag,
Director*



Profile: Mrs. Handelman - or as children tend to say, "Mrs. Hand-man"!

Bari Handelman is not your average preschool teacher! She doesn't teach a "regular" class. She teaches 6 different classes, touching every age group, from newborns through pre-kindergarteners. Get to know Bari and all the different hats she wears to enhance Temple Beth Ami Nursery School.

Parent-Child Classes

Bari teaches our Challah Tots, Bets to Be, and Transitional 2's classes. She loves seeing the children's growth as they progress through their first school experiences. "The children are curious and adorable, and capable of so much more than their parents think." She appreciates connecting parents – to her and to each other. She works intently to offer a safe space for parents to share parenting dilemmas and advice.

Each class has unique traits. For example, monthly Challah Tots is a chance to share Shabbat with parents and very young children and encourage their practices at home. Bari benefits from getting "that Shabbat feeling" during Challah Tots and then bringing it home to her family. "I love it!"

Torah-Telling

Once a month, Bari extends the story of Joseph and his brothers for the Dalets.



Think of a Jewish, preschool version of a "soap opera" that lasts the whole school year! With amazing props and costumes and a carefully crafted narrative, Bari commands 4-5 year olds' attention as she brings to life the emotions and relationships of Jacob's sons. She is amazed by the children's memory and insight each month. In its second year, Bari relishes the creative challenge posed by Torah Telling which she sees as a good expansion of her teaching skills and children's thinking skills.

Gimel Gathering

New this year, Bari leads a monthly Shabbat experience for the Gimel classes. She brings Shabbat songs with movement and she performs stories espousing Jewish values using lots of props and interactive dialogue. Bari says that the Gimels are so joyful that sharing Shabbat with them is a lovely experience.



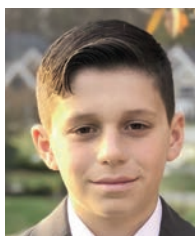
Zoofari

Rounding out Bari's portfolio this year is her Afternoon Activity for Gimels exploring animals using many different mediums. She begins with "Guess the Animal" introducing basic facts, and then proceeds to related experiences of art, music, games, stories and snacks. 1½ hours each Wednesday of delving into (and acting like) a polar bear, octopus, elephant, shark! It's a tough time of day for 3-4 year olds, and challenges Bari to use all her best teaching tools. She says it's worth it all!

According to Bari, each class brings a different kind of joy and satisfaction. She looks forward to each day and is always thinking about new strategies and new ideas. Bari is a motivated teacher, a talented leader, a knowledgeable Jewish educator, and a warm and friendly community player. We're lucky that she shares her myriad talents with all of us.

B'NAI MITZVAH*Profiles*

Please join with us at Shabbat Services during the month of February as we celebrate with...

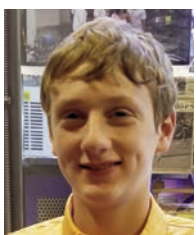


BENNETT LAVINE, son of Marisa and Josh, will become a Bar Mitzvah on Saturday, February 1. He is a seventh grade student at Ridgeview Middle School. Bennett has a younger sister, Elexa. Due to his passion for sports, Bennett has chose to collect used sports equipment for his mitzvah project. The equipment will be given to a local organization that will provide it to low income children in the DC area.



HENRY LEVENTHAL, son of Shari and Michael, will be called to the Torah on Saturday, February 1. He is 7th grader and National Junior Honor Society member at Shady Grove Middle, Henry enjoys playing basketball and soccer and watching sports. He plays trumpet in his school band and

does lighting on "crew" for school plays. For his mitzvah project, he volunteers at his overnight camp's farm to help grow produce that is shared with the food pantry where he also volunteers when he visits his grandparents in New York.



JAKE BENJAMIN DORFMAN, son of Rachel and Jordan, will become a Bar Mitzvah on Saturday, February 8. He is a 7th grade student at Robert Frost Middle School. He has an older sister, Nina, and a younger sister, Ellie.



RYAN DANIEL SCHWARTZMAN, son of Michele and Adam, will be come a Bar Mitzvah on February 15. He is a 7th grade student at Parkland Magnet Middle School for Aerospace Technology. He has an older brother Eli. For his Bar Mitzvah project, Ryan has been participating at the Monthly Family

Market, a program sponsored by the Capital Area Food Bank that allows students at Parkland Middle School help families in need from the surrounding community.

MITCHELL SAUL GOLUB, son of Eden and Drew, will become a Bar Mitzvah on Saturday, February 22. He is in the seventh grade at Robert Frost Middle School. Mitchell has an older brother, Spencer and an older sister, Bailey.



EVAN WILLIAM BURGESS, son of Lynsey & Ted will become a Bar Mitzvah on February 22. He is in the seventh grade at Lakeland's Park Middle School. Evan has a younger brother Aaron. For his mitzvah project, Evan will be donating his time to making lunch sacks for local

shelters.



JARED MACHOL EDWARDS, on of Eve Machol Pincus, will become a Bar Mitzvah on Saturday, February 29. He is a 7th grade student at Cabin John Middle School. Jared has two older sisters, Jess and Aden, and two older stepsisters, Alexis and Jamie, and a younger half brother,

Jackson. For his Bar Mitzvah project, Jared is participating in Cycle for Survival, a spin class event to raise money dedicated to researching cures for rare cancers.

SEASONS OF LOVE

Durim Shpiel 2020

March 8th & 9th

Temple Beth Ami Sanctuary

Music from the show "Rent"

RELIGIOUS SCHOOL NEWS

*Kim Roberts,
Director*



Calendar

Sunday, February 2

Machane TBA in session

Tuesday, February 4

TBAjrHigh & TBAHigh in session

Core 3 & Confirmation Night

Friday-Sunday, February 7-9

9th Grade Retreat

Sunday, February 9

Machane TBA in session

Primary Kehillah 11:00-12:30

NO Primary Enrichment

Gr 3-6 Kehillah Cooking 12:30-200

Tuesday, February 11

TBAjrHigh & TBAHigh in session

Elective Night

Friday-Sunday, February 14-16

NFTY-Vieda

Sunday, February 16

Machane TBA NOT in session

Tuesday, February 18

TBAjrHigh & TBAHigh NOT in session

Gr 7-12 Professional Development

Sunday, February 23

Machane TBA in session

Tuesday, February 25

TBAjrHigh & TBAHigh in session

Core 1 Night

Friday, February 28

Bet (Gr 2) Shabbat Family Experience 6 pm

Primary Service (PreK-2) 6:30 pm

Facebook: Be our friend for events,
photos, news and more

www.facebook.com/machane.tba.50

See complete calendar on the Machane
home page:

<http://bethami.org/education/machane/>

Kids Corner

Thank you to all of the students who participated in the December Kids Corner Challenge by drawing Hannukkahs! Below are just a few.

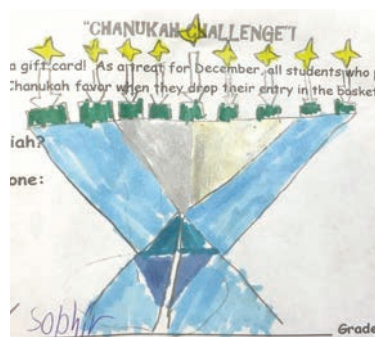
Emma Stief's (Gan) entry was drawn as the winner. Emma won a \$10 gift card!



Emma Stief (Gan)



Noa Roberts (Bet)



Joey Sophir (Dalet)



Harper Stief (Alef)

JOKE: Why do sea-gulls fly over the sea?

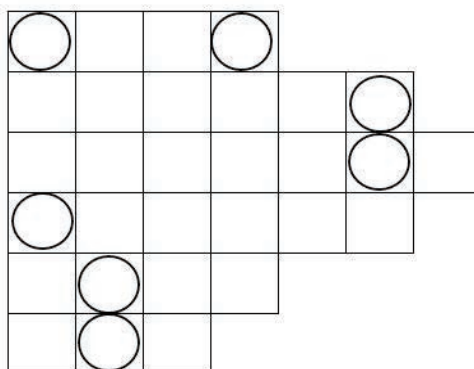
Kids Corner



WINTERTIME WORD SCRAMBLE

Unscramble each word about winter, then unscramble the circled letters to answer the question.

DLSE
RFYRUL
TNMTSIE
TWNEIR
DOCL
ATH



What are kids excited for on a winter morning?

A

--	--	--	--

--	--	--

!

Answers: Word scramble: sled, flurry, mittens, winter, cold, hat, A snow day! Joke: Because if they flew over the bay they would be bagels!

FEBRUARY CHALLENGE:

"Tikkun Olam" is important to the Jewish people. What does it mean?

Answer: _____

Name: _____ Grade: _____

Cut off and drop this form in the "Kids Corner Challenge" basket in the Machane office by **Feb. 16**. If your family needs more than 1 form, you can make a copy; There are also extra copies in the office. One correct winner will receive a gift card! Gift cards vary.

2019 High Holiday Appeal Exceeds Goal

Thank you for making this our most successful annual giving campaign ever. Because of your generosity we raised over \$153,000, which includes funds earned from our extraordinary anonymous \$50,000 challenge grant.

The rabbis teach: “without bread there is no Torah, and without Torah there is no bread.” Thank you for sustaining Torah in our midst and helping us to bring a little more light into the world.

Nedivim (\$5000 and above)

Eric & Susan Meyers
Jonathan & Ellen Bortz
Terry & Debra Korth
Brian & Joan Ochs
James & Sharon Lieberman
Michael Wolly
Norman & Jeannette Sturman

Shomrim (\$2000-\$4999)

Melissa Bauman
Cathy Friedman
Robert & Stephanie Oshinsky
Connie Heller
Mark & Lisa Kirsch
Merle & Rita Postal
Robert & Marjorie Bajefsky

Magen (\$1000-\$1999)

David & Jeanne Kahn
Gary & Shauna Pokras
Lawrence Rosenblum
Michael & Rachel Maryn
Seymour & Lois Fishman
Stephen & Lisa Paul
Robert Roseman & Suzanne Hirsch
Burt & Flora Feldman
Buzz & Lynn Karpay
Aaron & Jennifer Snyder
David & Karen Modell
Donald & Marcia Kaplan
Ira & Nancy Shapiro
Jason & Abigail Ford
Mark Klein & Deneen Wilson
Martin Norwitz
Michael & Gail Kaltman
Mitchell & Judith Glassman
Robin Bergen & Janine Hackett

Ronald & Holly Lobel
Steven & Madeline D'Alessio
Steven & Susan Braunstein
Neil and Linda Shiffman

Chaverim (\$500-\$999)

Brad & Pat Harvey
Barry & Kim Goldberg
Colin & Hilde Alter
David & Donna Kanin
Howard & Michele Koenick
James Schwartz
Jeffrey & Sheila Walcoff
Joshua Carin & Moira Geronimo-Carin
Lauren Bogart
Laurence & Heather Arnold
Lawrence & Lucy Cohen
Leon & Marysue Wechsler
Marc & Rebecca Hertzman
Mark & Olivia Sheinkopf
Morris & Roberta Liss
Robert & Lori Honigman
Todd Cohen & Baht Weiss

Tomhim (\$250-\$499)

Gerald & Roberta Feigen
Larrie & Joyce Greenberg
Sanford & Cherry Glazer
Adam & Vina Coonin
Brad & Holly Mendelson
Edward Williams & Janice Rosenblatt
Mark & Phyllis Silverman
Robert & Marjorie Winick
Ronald & Isadora Stehlin
Scott & Jacqueline Kauff
Scott & Susan Sterling
Stuart Treby
Warren & Lisa Marcus

David Fishman
Joseph Nadler
Kalman & Ruth Migler
Alan Ost & Kara Forest
Bruce & Cosette Smoller
Charles & Cecile Plost
David & Susan Fox
Debbie and Mark Ezrin
Elliott & Louise Allentuck
Ernest & Stacia Friedman-Hill
Ian & Linda Kramer
Jon & Barbara Ranhand
Jordan & Alissa Miller
Judy Fox-Teppe
Kirk & Andrea Denicoff
Lee Schwab & Susan Kassell
Louis Solomon & Leslie Marks
Meredith Beckhardt
Michael & Jackie Manis
Michael Kielbiewicz & Barbara Strong
Robert Parker
Samuel & Kimberly Roberts
Sondra Weiss
Terry & Rhona Arbit

Bonim (\$100-\$249)

Mark & Janet Wallace
Carol Martin
Edward & Susan Dosik
Liese Fischer
Ronald & Lisa Weinstein
Helen Salzberg
Daniel & Melissa Rosenstein
Ellis & Dale Koch
Gary & Judy Katz
James & Katherine Goldgeier
James & Lisa Richardson
Jay & Janet Liebowitz

Jonathan & Lizzie Westin
 Martin & Cheryl Frank
 Michael & Amanda Zbarsky
 Robert Goldman
 Seth & Terry Steinberg
 Stuart & Susan Wohl
 Thomas & Elizabeth Loggia
 Walter & Angela Harris
 Mark & Arlynn Joffe
 Roger & Lois Rothman
 Adele Narva
 Alan & Madeline Weinstock
 Alan Eisenberg
 Arthur & Linda Jacobson
 Daniel & Holly Gross
 Daniel & Julie Krakower
 David & Suzanne Fialkoff
 Don & Christina Halpern
 Edward Hopkins
 Edythe Kramer
 Elaine Miller
 Fredric & Elaine Gillespie
 Gary & Barbara Winter
 Gary & Evelyn Michel
 Ira & Sandra Blumenreich
 James & Linda Burgin
 Janet Platt Lambert
 Jennifer Miller
 Joel & Phyllis Polster
 Jonathan Dinman & Rachel Cohen
 Jonathan Edenbaum & Gayle Friedman
 Lawrence & Leslie Block
 Leonard & Jennifer Cohen
 Lillian Caplan
 Loretta Feldman
 Mary Ann Greenburg
 Matthew & Lisa Portnoy
 Michael & Judith Sherer
 Mitchell & Rhonda Gaynor
 Neil & Linda Burka
 Richard & Heather Luxenberg
 Robert & Brenda Speisman
 Steven Sachs & Kim Dettelbach
 Thomas & Robin Temin
 Toby & Linda Lehman
 William & Bernice Samuels

Edward & Susan Neumann
 Women of TBA
 Andrew Eisen & Barbara Linder
 Arnold & Gail Brodsky
 David Sacks & Marianne Curran
 Diane Castiglione
 Eric & Christine Myers
 Gerald Levine & Margo Smith
 Harvey & Charlotte Zuckman
 Howard Baum
 James & Virginia Michalowski
 Jason & Leslie Katz
 Jim & Sandra Diamond
 Jordan & Amy Klinger
 Judith Cope
 Lawrence Krevor & Marjorie Norris-Krevor
 Leslie Shapiro
 Mark & Marcy Jacobs
 Robert & Marlynn Goren
 Stuart & Janice Cadel
 James Weiss & Rosetta Cavallo

Chai (\$1-\$99)

Bradley Davis & Suzanne Slyn Davis
 Anita Marcus
 Adam & Eve Schiff
 Alan & Karen Asman
 Brian & Amy Rabin
 Dona Deutsch
 Elizabeth Joseloff
 Geoffrey Platnick & Tobi Printz-Platnick
 Jason & Cheryl Berkowitz
 Jay & Beth Gelfman
 Judith Blickstein
 Kevin & Cara Schorr
 Michael Herman & Cheryl Moss Herman
 Robert Drummer & Susan Stiles
 Simon & Marcie Nadler
 Temple Beth Ami
 Brandon Key & Laura Heller
 Morris & Sybil Cantor
 Peter & Susan Cohen
 Bruce Kramer & Joy Belin
 Carol Stein
 Daniel Laibstain & Jane Margolius Laibstain
 David & Gail Klein

Jeffrey & Jeri Berman
 Marc & Luanne Stanley
 Mark & Sue Kamins
 Peter Kaufman & Marie Lurquin
 Robert & Tina Ricigliano
 Amy Schwartz
 Ann Joseloff
 Arthur & Marsha Sandler
 Benjamin & Genene Sossa
 David & Shari Barash
 Dorothy Welan
 Edward Feinstein & Joanne Diamond
 Eric & Lisa Rubin
 Fred & Susan Kleiman
 Gerald & Elaine Auerbach
 Gerald Callistein & Karen Carp-Callistein
 Harriet Reiter
 Jack & R. Beth Rosenthal
 Jerald & Tina Levine
 John Schmelzer & Naomi Licker
 Leonard & Amy Gross
 Lewis & Linda Cohen
 Marian Lifton
 Matthew & Laurie Rudorfer
 Melvin & Joanne Brodsky
 Michael & Karen Folkart
 Mitchell & Paula Zeller
 Pauline Walstein
 Richard & Barbara Cohn
 Robert & Barbara Tahler
 Robert & Jodi Shapiro
 Sharon Bernstein
 Stanley & Ann Alster
 Mark & Kristen Waksberg
 Fred & Theresa Sanders
 Jeffrey & Helene Casper
 Marc & Jennifer Feinstein
 Marc & Jessica Rogers
 Marilyn Lipowsky
 Scott & Rachel Schwartz
 Wendy Simon
 Barbara Greenebaum

As of 12/26/19

PHOTO REVIEW

MAJYK; WTBA Pre-School Hanukkah Party, Cookie Brigade - Hanukkah Cookies, Shabbanukkah





COMMITTEE

News

INCLUSION - INVISIBLE DISABILITIES

Have you ever seen an able-bodied person park in a handicapped parking spot? Have you then discerned they are fine and do not need the space, even if they have a placard? I think many of us had, but that person probably has an "invisible disability."

According to the Invisible Disabilities Association, an invisible disability is a physical, mental or neurological condition that is not visible from the outside, yet can limit or challenge a person's movements, senses, or activities. They encompass many labels, but are represented by symptoms such as debilitating fatigue, pain, cognitive dysfunctions, and mental disorders, as well as hearing and eyesight impairments and more.

However, many with invisible disabilities continue to live productive and full lives, which often leads to confusion and misunderstandings. People might wonder if they really have a disabling condition and if the label is just an excuse to back out of responsibilities or social commitments. Friends and loved ones might say, "Just get up and go," "You'll feel better if you get out there," or "You did it yesterday, why can't you do it today?" As well-meaning as these comments might be, these attitudes and judgements often impair relationships.

Jewish Disabilities and Inclusion Awareness Month presents us with opportunities to reflect on what we do, think, and say when faced with strangers and loved ones with invisible disabilities. Take a step back, learn about the condition, encourage loved ones in ways that are truly helpful, and in the words of Hillel, *"Don't judge your fellow human being until you have reached that person's place."* Be kind - always.

News from TBA's Community of Action and Community Reach of Montgomery County

DO YOU KNOW WHAT IT COSTS TO APPLY FOR U.S. CITIZENSHIP?

- **Citizenship Application - Now \$725, proposed \$1170**
- **Green Card if Married to US Citizen - from**

\$1760 to \$2750, increasing by \$990

- **Passport Waiver for a legal immigrant who does not have a passport from home country, increasing 500% to \$2790**
- **Applying for a suspension of deportation, increasing by 200% (currently up to \$570 maximum for a family to \$1800 for any class (individual, family, etc.))**
- **A copy of one's immigration papers increasing by 600% to \$385**
- **DACA Renewal - Now \$495, increasing to \$765**
- **Asylum Seekers for first time will be charged a fee: \$50**

At the time this publication is going to print, Department of Homeland Security's US Citizenship and Immigration Services is expected to increase the fee for most services and applications. This means the students who are currently taking the Citizenship Test Preparedness classes run by Community Reach's Language Outreach Program (LOP) will have an even more difficult time raising the funds to apply for citizenship. For many, \$725 was already a steep fee that required months of saving. With the incredibly large expected increase, we are concerned that many legal residents, especially those from Central and South America, and Asia, may forego becoming citizens due to the cost.

To learn more about Community Reach's Language Outreach Program and for information about donating towards the program, go to <http://www.cmrocks.org/services/language-outreach-program>

PRESIDENT CONTINUED FROM PAGE 2

together is hard to describe but worth experiencing. After Shabbat, Second City performed on the Biennial stage.

Lynn and I are still talking about what we experienced at Biennial. We ran into old friends (Rabbi Zupan and Rabbi Spey both say hello to everyone), made new friends, and wished that more of our Beth Ami friends were with us. When you see me, ask me about it and I will fill you in with all the details that are too numerous to print here.

TIKKUN OLAM IN ACTION

Downsizing? Redecorating? Homes Not Borders Is a New Option for Donating Your Household Goods and Furniture

The Tikkun Committee has learned of a new option for people who have household items and furniture they wish to donate. Homes Not Borders (HNB) helps furnish the homes of newly arrived refugee families in our area and makes it easy to donate your gently used furniture, dishes, and other household items to families who can put them to use immediately! They will pick approved items up at your home and deliver them directly to the homes of refugee families.

Tikkun Olam Committee member Michele Koenick was downsizing recently and contacted HNB to donate several pieces of furniture. Within a week, HNB personnel had picked up her furniture and delivered it to two refugee families' apartments. Michele was pleased by the quick turnaround and felt good that her items went to people who really needed them.



HNB became a nonprofit organization in 2019 and opened for business at its Hyattsville location last June. Michele was so impressed with HNB's small but dedicated staff that she wanted to let other TBA members know about this exciting new option for donating gently used household items and furniture. Contact

Michele at mkoenick@gmail.com and she will help coordinate getting your household items/furniture picked up by HNB.

Please note: HNB needs to approve the items you wish to donate before Michele can coordinate a pickup. (Some items may be too large for a small apartment, for example.) Send a picture(s) of the items that you wish to donate by email to mkoenick@gmail.com and Michele will get back to you after coordinating with HNB. Feel free to contact Michele with any questions you may have about your donations, and visit <https://www.homesnotborders.org/> for more information about HNB.

One more thing: There may be times when additional "muscle power" is needed to help move items from congregants' homes. Please email Michele if you or someone you know would like to be added to a list of volunteers who might be available to help on short notice.

SERVICES CONTINUED FROM PAGE 1

Service - Bet

7:30 pm Erev Shabbat Jewish Disabilities and Awareness Service

AufRuf: Jessica Trizna and Sam Abrams

Saturday, February 29

10:30 am Shabbat Service

Bar Mitzvah: Jared Edwards

Sunday, March 1

10:45 am Sunday, Minyan

Friday, March 6

6:30 pm Erev Shabbat of Song & Story

Saturday, March 7

10:30 am Shabbat Service

Bar Mitzvah: Adam Dubelman

Sunday, March 8

10:45 am Sunday Minyan

Monday, March 9

6:30 pm Megillah Reading

COMING In March



PurimPalooza

Sunday, March 8

10:30 am – 1:30 pm

Kids of all ages are invited to bring their favorite adults for a fun-filled Purim celebration! Our morning will begin at 10:30 am with a Costume Parade and Purim Singalong, followed by the Purim Carnival and WTBA Purim Café serving up eats and treats for everyone. Stick around to catch our Purim Shpiel:

“Seasons of Love” and enjoy hamentashen on your way out. Stay tuned for details! (Note: There will not be regularly scheduled Machane TBA on Sunday, 3/8, to allow everyone to enjoy Purim together).

Purim – PM Edition

Monday, March 9

6 - 8 pm

Join us at 6 pm for Haman’s Happy Half-Hour, then enjoy an abbreviated Megillah reading, followed by the Purim Shpiel, “Seasons of Love.” The evening concludes with a hamentashen oneg for all.



Support Session: Grief & Unexpected Loss

Sunday, March 15

9 - 10:30 am

Bitachon, the Temple’s Mental Health Initiative, is pleased to offer a Sunday morning support session on Grief and Unexpected Loss, facilitated by Roberta Drucker, LCSW-C. All ages, from young adult to grandparents – are encouraged and welcome to attend. Whether from the loss of a child, spouse or

loved one; from suicide to a national shooting – this session will address grief and unexpected loss. No charge to attend, but please RSVP to Shelly (slg@bethami.org) by 3/12 to help us with planning.

WOMEN OF TBA CONTINUED FROM PAGE 6

people in the building for this regional NFTY event!

Ongoing Activities

Drop-in **Mah Jongg** games are held at the Temple every Monday afternoon from 1:00 pm – 3:00 pm when the Temple is open. Please contact Rachel Maryn at rmaryn@verizon.net for more information or to be added to the email list.

Come join Drop-in **Canasta** at Beth Ami every Tuesday from 1:00 pm – 3:30 pm in the library. All levels are welcome. Make some new canasta friends while you enjoy an afternoon of play! Please bring cards and trays if you have them. For more information, please contact Eve Lader at evelader@gmail.com. Never played and want to learn? Need a refresher? Contact Eve for more information about upcoming classes.



Kippot for B’nai Mitzvah and weddings are available at discount prices through WTBA. View styles at www.kippah.com and contact Eve Lader at 301-938-0200 or evelader@gmail.com to place an order.

WTBA presents a wedding gift of the beautiful book On the Doorposts of Your House: Prayers and Ceremonies for the Jewish Home to **TBA newlyweds**. Please email Barbara Ranhand at Barbara.ranhand@verizon.net with information about any Temple families who are planning a wedding.

If you have any new ideas for activities or would like to help plan an event, we’d love to hear from you! We can be reached at womenof templebethami@gmail.com.

Elizabeth Joseloff

WTBA Chadashot article editor

RABBI CONTINUED FROM PAGE 1

NYPD statistics, 227 anti-Semitic incidents have been reported.

This world seems a very different one from the one in which I grew up. I hear our local high school students talk about swastikas found in their schools and anti-Semitic comments made by friends. I never felt unsafe because of my Jewish identity, and like Mordecai, the name Baht, did not exactly allow me to hide my religious affiliation. As a synagogue in California was desecrated right before Hanukkah and then followed by these crimes in my native town - it makes our Biblical stories suddenly, sadly, become more identifiable.

And it is the Jews who look most outwardly Jewish - wear a kippa or a yarmulke, dress in Chassidic dress or don beards and those that shop at Kosher supermarkets and those that attend synagogues across the country - that like Mordecai become those that are the greatest target.

Many Jews have been going “underground” and concealing their Judaism to not risk attack. In a survey of American Jews by the American Jewish Committee, released in October, 31 percent of respondents said they had taken steps to hide their Jewish identity in public while 25 percent said they now avoided Jewish sites. AJC CEO David Harris points out, that this was before the recent attacks in Monsey and Jersey City.

Queen Esther also was tempted to act this way. She was afraid of putting herself in danger by affiliating, but ultimately, she knew it was her responsibility to be true to herself and her people. We find ourselves in a moment like Esther did—when we wonder if we should stand up and speak out or try to blend in.

I will be diving into this concept of our Dual Identities as Jews and Americans during a Live and Learn Series this month on February 4, 11 and 18 at 10:30 am and comparing our lives to the Purim story of Shushan. I hope you will join me.

There will always be individuals that will threaten our religious freedom. Despite these fearful times, how can, we like Queen Esther, come out as Jews? It could be as simple as wearing a Jewish star necklace in public to standing in solidarity with all

Jews and all religions-realizing that hate is hate.

An opinion column in the New York Times, reminds us that “we cannot allow this situation to become the ‘new normal’ as if attacks on Americans because of their religious or ethnic identities are now expected as part of every day lives. These attacks violate everything that Americans should hold dear. An attack on any American group is a threat to the pluralistic fabric of our nation.”¹

We must continue to show up at synagogues and at churches and at mosques to support each other. We cannot be afraid to speak out against injustice because as Mordecai told Esther, “perhaps you have attained to royal position for just such a crisis.” (Esther 4:14)

We must use all positions of power and influence to speak out against hate and to be proud of our Jewish identity. One of my favorite examples of the power of community engagement is what happened in Billings, Montana in 1993 after a year of racist and anti-Semitic incitements that culminated with the throwing of a brick through the bedroom window of a young child in a Jewish home that had a menorah on display. In response to this, under the leadership of the police chief and a newspaper editor, paper cutouts of a menorah were made widely available. Thousands of households in Billings put them in their windows, The message was clear that Anti-Semitism and racism had no place there.

As we prepare for the next Jewish holiday of Purim, may we take off our masks that hide our true identity. May we be proud of who we are and refuse to live in fear. Let us summon our own inner Queen Esther and speak out for what is right.

¹ Loewy, Nita and Harris, David “How to Respond to Anti-Semitic Attack in Monsey,” NY Times December 30, 2019

WE GRATEFULLY *Acknowledge*

A contribution to a Temple fund is a meaningful way to support the Temple community while honoring a birthday, recuperation, wedding, graduation, birth or any special occasion. Donations may also be made in memory of a loved one. For a minimum \$10 donation, an acknowledgement will be sent to the person you wish to honor or the family of the deceased. If you have any questions about existing funds or wish to establish a fund, please call Debbie Ezrin, Executive Director, at 301.340.6818.

ACCESS AND SPECIAL NEEDS FUND BY THE MIZRAHI & SHEVITZ FAMILY

In honor of:

TRAVIS AND MILES SKLAR becoming B'nai Mitzvah by the Friedman Family

ANTI-ADDICTION FUND IMO SCOTT STERNBERG

In memory of:

Scott Sternberg by Rob Shapiro and family

CANTOR'S DISCRETIONARY FUND

In honor of:

CANTOR LARRY ESCHLER in appreciation of your guidance and support for Ella in preparation for her Bat Mitzvah and beautiful service by Julie and Darren Sapper

CANTOR LARRY ESCHLER in appreciation of his caring and kindness he constantly shares with the congregation, by Joan and Steven Cohen

CANTOR LARRY ESCHLER for his spiritual advice. Thank YOU, by Becky Corbett

JNF GROVE FUND

In memory of:

MILTON DUBROV, grandfather of Laura

Hosid, by The Lewis Family

LIVE & LEARN FUND IMO SALLY B. KERA

In honor of:

MARILYN LIPOWSKY (mom) for setting such a good example for all of us and honoring you on your special birthday, love Jody Rosenblum

ARTHUR BOWEN, brother-in-law of Shirley

Levin by Gail and Mike Kaltman

HELENE SWIRSKY, mother of Amy Wollins by Gail and Mike Kaltman

In memory of:

My aunt, SYLVIA DUNKLEMAN and my father, ARTHUR WILCHER by Leslie Shapiro

MACHANE TBA (RELIGIOUS EDUCATION) TZEDAKAH FUND

In honor of:

SAMUEL WALTER, son of Elan and Heather Walter and brother of Jake and Ethan by the Machane Staff

ONEG FUND

Joanne and Jacob Ginsberg in honor of Isaac becoming a Bar Mitzvah

Jamie and Brad Dashoff in honor of Gabriel becoming a Bar Mitzvah

Gimel parents in honor of their children receiving their siddurs

Jeanne and David Kahn in memory of Rose Sukonick

Leslie Marks and Louis Solomon in memory of Morris Yaffe

Barbara and Steve Friedman in memory of Sol Friedman

Janet and Mark Wallace in memory of Emma Grace Honeycutt

Judith and Michael Sherer in memory of Cyril Sherer

Lisa and Joel Goodman in memory of Burton Shaffer and Kay Goodman

Roberta and Jerry Feigen in memory of Philip Feigen and Mildred Goldstein

Helen and Norman Kamerow in memory of Sarah Rosenthal

Barbara Strong and Michael Kielbiewicz in memory of Susan Dawson

Madeline and Steven D'Alessio in memory of Paul Krupenie

Inna and Mikhail Etin in memory of Esfira Altman

Gail Kaplan Wassell and Jon Wassell in memory of Doris Kaplan and Milton Kaplan
Christina and Don Halpern in memory of Frank Halpern

Rhonda and Mitchell Gaynor in memory of Leonard Gaynor

Linda and Ira Berger in memory of Eleanor Matsas

Janet and Jay Liebowitz in memory of Dr. Harold J. Zeide

Sherry and Michael Greenbaum in memory of Corrielee Peerce

Sirina Tsai and Perry Bechky in memory of Abigail Bendis

Rabbi Jack Luxemburg and Barbara Etkind in memory of Milton Luxemburg

Phoebe Joseph in memory of Rose Potash Brown, Matilda Joseph Cohen and

Clarence Coleman Joseph

Ellen Davis and Myra Kaplan in memory of Ari Kaplan-Davis and Simone Kaplan-Davis

Helen Salzberg in memory of Lena Ginsberg

The Korth Family in memory of Yetta Korth

Terry and Seth Steinberg in memory of Steven Steinberg

Amy and Leonard Gross in memory of Jonathan R. Steinberg

RABBIS' DISCRETIONARY FUND – RABBI JACK LUXEMBURG

In memory of:

ARTHUR BOWEN, brother of Julius Bowen, by Helen Salzberg

RONNIE SAX, by Barbara and Neil Willens

NATE HIRSCHFELD becoming a Bar Mitzvah, by Jaime and Adam Hirschfeld

RABBI'S DISCRETIONARY FUND – RABBI GARY POKRAS

In Honor of:

RABBI POKRAS' support and guidance during Ella's Bat Mitzvah preparations, by Darren and Julie Sapper

RABBI POKRAS for his leadership and pastoral counseling, by Becky Corbett

In memory of:

MARK SCHAFFER and in appreciation of Rabbi Pokras for the lovely service as well as his kindness and guidance at the time of Mark's passing, by Russell and Debra Schaffer

RABBI'S DISCRETIONARY FUND – RABBI BAHT WEISS

In Honor of:

RABBI WEISS' tremendous support and guidance during Ella's Bat Mitzvah preparations and for leading a beautiful service, by Darren and Julie Sapper

RABBI WEISS, with sincere thanks for making our family so welcome, by Stuart and Andrea Mirowitz

RABBI WEISS for her help, guidance and participation in our marriage, by David and Marianne Sacks

RABBI WEISS' help in making Nate's Bar Mitzvah a success and ongoing support, by Jaime, Adam, Nate and Drew Hirschfeld

In memory of:

FAYE FRIEDMAN and with thanks to Rabbi Weiss for a beautiful service in celebration of Faye's life, by Ernest and Stacia Friedman-Hill
CELIA FEIT, mother of Al Feit, grandmother of Karen Mahoney, by Al and Barbara Feit

SUSTAINING (GENERAL) ENDOWMENT FUND

DONATION by Lisa and Stephen Paul

In memory of:

HELENE SWIRSKY, MOTHER OF AMY WOLLINS, by Judy and Mitchell Glassman

DONATION by Mitchell and Rhonda Gaynor

TBA CARES FUND

In honor of:

DEBBIE EZRIN's appointment as our new Executive Director, by Joan and Brian Ochs

In memory of:

ARTHUR BOWEN, brother of Jules Bowen, by Joan and Brian Ochs

TBANS (EARLY CHILDHOOD) FUND

DONATION by Josh and Jessica Silbermann

In honor of:

TBANS by Marsha and Robert Diamond

TBANS (EARLY CHILDHOOD) DIRECTOR'S FUND

In honor of:

LEONA WEATHERS' first year with TBANS, by Jody Rosenblum

TBANS (EARLY CHILDHOOD) SCHOLARSHIP FUND IMO

JOEL BLUE

In honor of LISA GOODMAN'S support and guidance for Ella's Bat Mitzvah preparations. We just adore you. By Julie and Darren Sapper

TIKKUN OLAM (COMMUNITY SERVICE) FUND

In honor of:

GABE DASHOFF becoming a Bar Mitzvah, by Jacqueline and Scott Kauff

In memory of:

ARTHUR BOWEN, brother of Jules Bowen by Susan and Peter Cohen
SHAELA SAVAGE, niece of Cantor Larry Eschler by Robin and Tom Temin
AUDREY SILVERMAN, mother of Margie Halem, by Barbara Strong and Michael Kielbiewicz

WOMEN OF TEMPLE BETH AMI

In memory of:

AUDREY SILVERMAN, mother of Margie Halem by Jeanne and David Kahn

WISH LIST FUND

In honor of:

JANICE ROSENBLATT on her retirement by Heidi and David Moskowitz
JANICE ROSENBLATT on her retirement by Joseph Nadler

YAHREZEIT FUND

In memory of:

Holly and Ron Lobel in memory of Rachel Sher

** AS DECEMBER 24, 2019

*"May the memory of these
Righteous
be for a blessing"*

We mourn the recent death of:

Monroe Sandberg
father of Marnee Bloomfield

Merrill Sklar
father of Gary Sklar

Liese Fischer
mother of Diane Castiglione and
grandmother of Michael Castiglione

Helene Irma Swirsky
mother of Amy Wollins

Ronnie Lapinsky Sax
wife of Leslie Sax, z"l

Harvey Karmiller
stepfather of Stuart Cadel

Josh Berenzweig
nephew of Heather Kafetz

Audrey Silverman
mother of Margie Halem

Milton Dubrov
grandfather of Laura Hosid



No one has to do it alone.

Someone who cares will always be here to help you
with your funeral needs, in a supportive, caring way.



Garden of Remembrance

GAN ZIKARON MEMORIAL PARK

17 YEARS OF CARING SERVICE AND DEDICATED SUPPORT TO
THE JEWISH COMMUNITY OF GREATER WASHINGTON

Call Debbie Ezrin at Temple Beth Ami, 301.340.6818
or visit www.gardenofremembrance.org

Partner Agency of
The Jewish Federation
OF GREATER WASHINGTON



When you Need Help After Hours.

The 24/7 emergency number is available for Temple emergencies. After regular business hours, please call the office (301-340-6818) and follow the prompts to the emergency number. The clergy and the executive director are always available to help you.

SHARE WITH US...

We want to know. Please let us know of any significant life cycle event in your family (or the family of a member friend or neighbor), such as a birth, engagement, wedding, illness or death so we can be in touch. Please contact Gail Brodsky, Clergy Assistant, at 301-340-6818 or gsb@bethami.org

ONGOING Information

JSSA Liaison is Here for You

Through our special relationship with JSSA, TBA members are able to receive free and confidential consultation on family and mental health issues including parenting children of all ages and aging parents. Roberta Drucker is a Licensed Clinical Social Worker and also earned a BA in Psychology, and Early Childhood, Elementary and Special Education. Her specialized training and experience include the treatment of anxiety, OCD, and other mood issues, ADHD, learning disabilities, families with special needs, parenting, couples and family therapy, aging and bereavement, and intergenerational family therapy. During her tenure as Director of JSSA's Resettlement Program, she provided services to families, and consultation to staff in a variety of settings, including Jewish Day Schools, public schools, pre-schools, and religious schools. Please contact Roberta at rdrucker@jssa.org or 301-610-8369 for free confidential consultation.

No Handicap Spots Available?

If you are unable to find a reserved handicap parking spot, please pull up to the entrance, call the office, and we will be happy to park your car for you. 301.340.6818.

Can't Get to Services?

Be with us through video streaming. Go the home page of our website and click on view video streaming in the Service Schedule box. You can also listen to services by calling 301-309-3834.

Check out our mobile friendly website. www.bethami.org

GREAT NEWS!!! YOU CAN SHOP AT AMAZON AND SUPPORT TEMPLE BETH AMI AT THE SAME TIME!

Do you shop on the Amazon.com website? Do you know that if you enter the Amazon website from a link on the Temple Beth Ami website, TBA will earn 5% of your purchase price for every purchase you make? It is very easy and you will be helping TBA. You can access the Amazon site to earn money for TBA using this URL which takes you directly to Amazon: <http://tinyurl.com/bethamishop>. BUT REMEMBER, TBA ONLY EARNS MONEY IF YOU GO TO AMAZON THROUGH THE TBA WEBSITE OR THIS URL!

Just imagine, you can "shop 'til you drop" without leaving home and put some badly needed cash in TBA coffers. GO

CELEBRATING? Remember MAZON

Our Congregation is a MAZON congregation which means that we contribute 3% of every event in which food is served to MAZON: A Jewish Response to Hunger (also \$3 of every Oneg contribution). We ask every member of the congregation to do the same.

BAR/BAT MITZVAH...contributing to Mazon brings food and help to the hungry, while it gives your child the opportunity to begin his/her Jewish adult life with a public act of Tzedakah.

WEDDING...traditionally it is the obligation of the bride and groom to feed the hungry and help the poor. By contributing 3% of the cost of your wedding celebration to MAZON, you can continue these Jewish traditions.

Is Your Email Address Current? Are You on Chaverweb? Are You Connected?

If you are not yet connected to the Chaverweb system, it may be because we do not have an up-to-date email address. Please contact Diane Ferraro at idf@bethami.org if you did not get the emailed invitation, and she will help you connect. Chaverweb will enable you to update your personal profile, view the on line membership directory, review your account, register for school, programs and enter Yahrzeit information, etc.

If you are already in Chaverweb, but FORGOT YOUR PASSWORD, please DO NOT SIGN IN AS A GUEST; simply click on "forgot your password" and you will receive a new one by email.

You'll want to STAY CONNECTED.

BUDGET COMMITTEE WANTS YOU

The TBA Budget Committee is forming. If you have interest or experience in TBA's annual budgeting process please contact Madeline D'Alessio. at mkdalessio@gmail.com. We will meet Wednesday evenings from late January through March.

Washington Jewish Week will not print your Bar/Bat Mitzvah announcement and photo for free. The following is the link to submit your announcement and photos:
<https://washingtonjewishweek.com/submit-your-celebration/>

**Come in for a visit and warm up!
Enjoy coffee, activities, books
and nice people.**

Box Tops for Education

A major change has been announced for the way Box Tops for Education (BTE) coupons are processed and dollars credited to schools. No more clipping small coupons and sending them to schools to consolidate and forward to a central processing site! Paper is so 20th Century. Electronics are 21st Century!

The new process will involve having each shopper register online to donate to a school. Then, when a participating product is bought, the consumer uses a smartphone app to scan the store's sales receipt. If all works correctly, the app will credit all the participating products that were bought, at 10 cents each, to the school. Very cost-effective. And no hand-counting coupons and shipping them to a central facility where they are recounted and a check issued to the school.

The new system does require consumers to own a smartphone, pre-register, and remember to scan sales receipts.

This summer, manufacturers started converting to the smartphone coupon. BTE labels now in consumer pantries or store inventory will still be honored if presented before the expiration date, which is printed on the coupon. So, until the day when no coupons are available, we will still have a collection box for those little pink labels in the Temple lobby.

Questions? Call Bernard Silverstein at 301-598-5283.

WELCOME TO TEMPLE BETH AMI!

Our core purpose:

We are dedicated to creating a community that embraces the meaning, inspiration, and ideals found in Reform Judaism.

We foster connection with our personal spirituality, each other, and our larger community.

We encourage innovation that honors our Jewish heritage, is attentive to our present experience and generates our common future.

Beth Ami's Hospitality Initiative Wants YOU!

If you've been to Erev Shabbat services, you've been welcomed by fellow congregants and donned a name tag so others can greet you by name. You've also noticed a Welcome Table, the hub of our Hospitality Initiative. These efforts are a way to make all who enter our doors feel the warmth and caring of our congregational community, whether they are members or visitors who are worshipping with us for the first time.

Our "Welcome Ambassadors" also have benefitted from volunteering for this effort. They have gotten to know more and more Temple members, as well as visitors and families of B'nai Mitzvah who have come to celebrate. In helping others feel more connected to TBA they, too, have come to feel like an important part of Temple life.

While we have a cadre of dedicated volunteers who make Erev Shabbat services THE place to be on Friday evenings, we are looking for additional Temple members who would like to serve as "Welcome Ambassadors".

Please RSVP to Cathy Friedman at 301-330-8377 or cathyfriedman@gmail.com if you are interested in becoming a "Welcome Ambassador". You will be joining a great group of Temple members who are making a difference.

MAY THE REASONS YOU BELONG BE THE REASONS YOU GIVE

Please remember the Temple in your annual giving plans. Please make a tax-deductible donation to the High Holy Days Appeal, religious school and nursery school scholarship funds*, the general fund, clergy discretionary funds, caring community funds or any fund that is important to you and your family. You can donate cash, pay on line by credit card, or use appreciated stock.

Create a Jewish Legacy. Jewish tradition teaches us that it is our responsibility to make this world a better place for future generations. Please consider a legacy gift to Temple Beth Ami as part of your estate planning. Please contact Debbie Ezrin at dezrin@bethami.org to learn more.

Please join your fellow congregants who remember the Temple every year; every gift is sincerely appreciated.

BOOKING A HOTEL?

If you are booking the Hilton Garden Inn or Homewood Suites on Shady Grove Road for your guests, tell them you are members of TBA and the Temple will receive a rebate.

Looking to Make a Connection?

The clergy and staff are here to help you find that special connection with your congregation. Whether it's a class, service, kehillah, social action project, film, dinner, leadership role – just check out the Chadashot, the UTTM Thursday e-blast, the website and come join us. If you want help connecting, contact Shelly Gordon at 301-340-6818 or slg@bethami.org. It's YOUR congregation; be connected.

Chadashot

Temple Beth Ami
14330 Travilah Road
Rockville, Maryland
20850-3527

NON PROFIT ORG.
U.S. POSTAGE
PAID
SUBURBAN MD 20898
PERMIT 761

RETURN SERVICE REQUESTED

FEBRUARY 2020 SHEVAT/ADAR 5780

TEMPLE BETH AMI

Chadashot

TEMPLE STAFF

SENIOR RABBI	GARY POKRAS
RABBI	BAHT YAMEEM WEISS
CANTOR	LARRY ESCHLER
CANTORIAL SOLOIST	BEN PAGLIARO
EXECUTIVE DIRECTOR	DEBBIE EZRIN
DIRECTOR OF EDUCATION	KIM ROBERTS
EARLY CHILDHOOD DIRECTOR	PAULA SAYAG
PROGRAM DIRECTOR	SHELLY LENKIN GORDON
RABBI EMERITUS	JACK LUXEMBURG
CANTOR EMERITA	SUE ROEMER z"l
TEMPLE ADMINISTRATOR/EDITOR	DIANE FERRARO
TEMPLE ADMINISTRATIVE ASSISTANT	RACHEL KESSLER
ACCOUNTING	JOANNE DIAMOND
ACCOUNTING	ESTHER ABELSON
CLERGY ASSISTANT	GAIL BRODSKY
TBA HIGH SUPERVISOR, GRADES 8 -12	LORI FEIN
L'MALA SUPERVISOR, GRADES 3 - 7	LISA GOODMAN
L'MALA SUPERVISOR K - 2	LORI FEIN
L'MATA SUPERVISOR GRADES 3 -6/KAYITZ	ELAINE PRIGAL
REL. SCH. OFFICE MANAGER/REGISTRAR	JENNIFER SMITH
NURSERY SCHOOL ADMINISTRATIVE ASST.	JILL FINCI
NURSERY SCHOOL SPECIAL PROJECTS COORDINATOR	ELLEN BORTZ

BOARD OF DIRECTORS

PRESIDENT	BUZZ KARPAY
1ST VICE PRESIDENT	DAN ROSENSTEIN
2ND VICE PRESIDENT	LAUREN BOGART
3RD VICE PRESIDENT	JOAN OCHS
TREASURER	KAL MIGLER
ASSISTANT TREASURER	MADELINE D'ALESSIO
LEAD FINANCIAL SECRETARY	BURT FELDMAN
ASSISTANT FINANCIAL SECRETARY	ANDRA ABRAMSON
RECORDING SECRETARY	TAMMY ROBERTS
GENERAL COUNSEL	BRAD DASHOFF
IMMEDIATE PAST PRESIDENT	LAURA ROSE
PAST PRESIDENT	TOM TEMIN
WOMEN OF TBA REPRESENTATIVE	SHARI DAVIDSON
BROTHERHOOD PRESIDENT	STEVE ROBERTS

MEMBERS-AT-LARGE:

MATT BARON, AARON CHUSID, STACY DERRICK, ETAN HARMELECH,
JORDAN KLINGER, MICHAEL MANIS, JENNIFER WINICK MILLER, ROBERT
OSHINSKY, RON WEINSTEIN, MICHAEL ZBARSKY

HAPPY PURIM!

DID YOU KNOW it is a *mitzvah* to send sweet treats and offer *tzedakah* on Purim? Beth Ami will help you fulfill this *mitzvah* by sending Purim wishes along with a gift box full of delicious and delightful treats for your friends and family! Each Recipient family will receive one Purim gift box ("Mishloach Manot") and a card including the names of all those who contributed to their gift. It's a great way to share the joy of the holiday with others in our community! Details on how to place your order will arrive in your email soon!

We celebrate Purim on March 9th!

Embrace Judaism

Foster Connection

Encourage Innovation