

# TEMPLE BETH AMI Chadashot

JULY/AUGUST 2019 SIVAN/TAMUZ/AV 5779

VOLUME 47 NUMBER 1

## SCHEDULE OF SERVICES

### Friday, July 5

6:45 Picnic & Pie Shabbat  
Including Volunteer Recognition

### Saturday, July 6

10:30 am Shabbat Service  
Bar Mitzvah: Jacob Reiser

### Sunday, July 7

10:45 am Sunday Minyan

### Friday, July 12

6:30 pm Tot Shabbat  
7:30 pm Erev Shabbat Service

### Saturday, July 13

10:30 am Shabbat Service  
Bat Mitzvah: Alina Miller  
10:30 am Shabbat Chapel Service

### Sunday, July 14

10:45 am Sunday Minyan

### Friday, July 19

6:30 pm Spirit of Shabbat

### Saturday, July 20

10:00 am Shabbat Minyan\*

### Sunday, July 21

10:45 am Sunday Minyan

### Friday, July 26

7:30 pm Erev Shabbat Service

### Saturday, July 27

10:00 am Shabbat Minyan\*

### Sunday, July 28

10:45 am Sunday Minyan

### Friday, August 2

6:30 pm Erev Shabbat of Song &  
Story

### Saturday, August 3

10:00 am Shabbat Minyan\*

### Sunday, August 4

10:45 am Sunday Minyan

CONTINUED ON PAGE 20

## MESSAGE FROM *Rabbi Luxemburg*



### Our Ongoing Relationship

During my three years as Rabbi emeritus, I have appreciated every opportunity offered me to remain an active part of our congregational community. I enjoy every invitation to take part in a bar/bat mitzvah or other happy life-cycle event, as well as every class I am asked to teach or congregational trip I am asked to lead. It means a lot to me when a family in distress asks for my presence at a difficult moment, and when I can make joyous music with the Shabba-Tones. It's gratifying when I am contacted by our clergy, professional staff or lay leaders in order to discuss what's happening in the congregation, and to be greeted by Temple members when we meet, be it at the Temple or out and around in community. I



even like being asked to write an occasional Rabbi's Message!

One of the things I have learned is that my continuing relationship with Temple Beth Am, our clergy, professional staff, lay leaders and membership is nothing to be taken for granted. I learned this by becoming active with an organization called NAORRR – National Association of Retired Reform Rabbis. Yes, there is such a thing – a organization of retired rabbis! We even have a board of directors (to which I was recently elected) and an annual conference every January. Thankfully, it is always in a warm place. Barbara and I enjoy these meetings. We connect with classmates and friends, and get better acquainted with older colleagues

CONTINUED ON PAGE 20

## HIGH HOLY DAY INFORMATION ONLINE

Sign onto your Chaverweb account to order your tickets!  
Rosh Hashannah starts Sunday, September 29.

## TABLE OF CONTENTS

President's Message	2
Coming this Summer	3 - 4
Holiday - Tisha B'Av	4
Tikkun Olam List	5
Brotherhood	6
Women of TBA	7
TBANS	8
B'nai Mitzvaah Profiles	9
Simchas	10
Machane TBA/TBA High11/12	
Committees	13, 17 - 19
Photo Reviews	14 & 16
Volunteer Award	15
New Policy	15
Memorium	21
Sunshine	22 - 24
Ongoing	24 - 25
Advertising	26 - 31

### Chadashot

Published monthly by  
TEMPLE BETH AMI  
MEMBER

UNION FOR REFORM JUDAISM  
14330 TRAVILAH ROAD  
ROCKVILLE, MARYLAND 20850-3527

TEMPLE OFFICE 301.340.6818  
FAX 301.738.0094

[www.bethami.org](http://www.bethami.org)

HOURS:  
MON-THURS 9:00 AM - 6:00 PM  
FRI 9:00 AM - 3:00 PM  
SAT CLOSED  
SUN CLOSED

RELIGIOUS SCHOOL 301.340.8335  
FAX 301.610.6239  
NURSERY SCHOOL 301.762.5594  
FAX 301.610.5827  
BROADCAST SYSTEM 301.309.3834  
LIVE STREAMING [WWW.BETHAMI.ORG](http://WWW.BETHAMI.ORG)

## MESSAGE FROM

*Laura EJ Rose, President*



### FIRST, A BIT OF TEMPLE BUSINESS, AND THEN SOME SUMMER THOUGHTS.

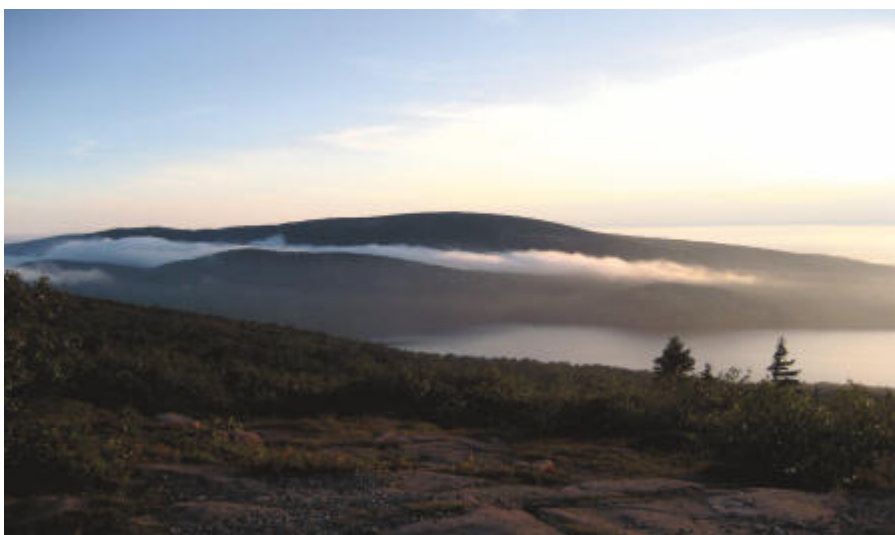
I want to remind you that our Vision 2020 Action Teams are hard at work over the summer. If you are interested in participating, you can still join one of the teams: Dues Models, Fundraising, Membership Engagement, Communications, or Spirituality. Let me know if you're interested and I'll put you in touch with the committee chair.

I hope you are enjoying your summer and that you've been able to vacation with your family. Lynn and I like to go to the mountains when we can.

Several years ago, we discovered Acadia National Park in Maine. We've been there quite a few times in the past 10 years. The

coast as well, making it a perfect place for us to relax. There have been days when we sat on the rocks near the water and did nothing but watch the tide come in and go out again. We also walk and hike as much as possible.

The tallest peak in the park, and for quite a distance around the park, is Cadillac Mountain. One of the big attractions of Cadillac Mountain, because it is the tallest peak around, is watching the sunset from an overlook on the west side of the mountain. We have watched the sunset from that overlook quite a few times, and it never fails to impress. On one of our trips, we went up to see the sun set on a Friday evening. We had just found a comfortable place to sit when we became aware of a group just a little higher than us that seemed to be preparing to make Shabbat. We could see that they had a



park is on the coast, but there are few beaches there as the coast is entirely rocky. Mountains come right up to the

challah and grape juice, and the part of the conversation that we could overhear made it clear that it was no coincidence

CONTINUED ON PAGE 17

**COMING***This Month***Picnic & Pie Shabbat including Volunteer Recognition****Friday, July 5****6:45 pm**

Join us to celebrate red, white & blue style AND give thanks to ALL of our volunteers! Just bring a dinner to enjoy (or pre-order pizza online), your lawn chair or beach blanket, and find a spot out back in the Rova (backyard). Brief business meeting at 7:15 pm; our Erev Shabbat Service with The ShabbaTones Temple Band begins at 7:30 pm. Casual and comfortable dress.

**Broadway Buzz with Steve Friedman****Monday, July 8****10:30 am – 12 pm**

Topic: The Best “Bad” Characters in a Musical. Don’t miss this popular Monday morning program, featuring footage, facts and, always, some live performance. Free for Temple members; \$10 for guests (cash or check only).

**Live & Learn with Rabbi Pokras****Tuesdays, July 16, 23, 30****10:30 am – 12 pm**

Topic: The Prophet as Maven: Why it's no job for a nice Jewish kid

The books of Prophets are the longest section of the Jewish Bible (TaNaKh). In this text-centered class, we will dive into the world of the prophets, explore why this is the longest part of our bible, and learn why our parents wanted us to be doctors, lawyers and accountants instead of prophets! All are welcome; no charge.

**TBA Cycling Club****Sunday, July 21**

Save the date and stay tuned for details about a C&O Canal ride including some commemoration of National Ice Cream Day!

**Live & Learn with Cantor Eschler****Tuesdays, August 6, 13, 20****10:30 am – 12 pm**

Topic: Elul: 30 Days to a More Meaningful High Holy Days. Change doesn’t happen all at once. One must prepare to be in a position to take advantage of opportunities when they present themselves. The 30 days before High Holy Days, which coincide with the Hebrew month of Elul, is one such period. Come join Cantor Eschler in a 3-part series on exploring productive ways to personally engage with the Book of Life. All are welcome; no charge.

## COMING *This Month*



### **TBA Cycling Club**

**Sunday, August 25**

Save the date and stay tuned for details about a local ride: Soccerplex/Germantown/Boyds/Darnestown.



### **Broadway Buzz with Steve Friedman**

**Monday, August 26**

**10:30 am – 12 pm**

Topic: The Best “Bad” Characters in a Musical, II. Don’t miss this popular Monday morning program, featuring footage, facts and, always, some live performance. Free for Temple members; \$10 for guests (cash or check only).



### **Welcome (Back) Picnic Shabbat**

**Friday, August 30**

**6:45 pm**

Our final Picnic Shabbat of the season will begin with a special New & Prospective Member Welcome (6 - 6:45 pm) for all new members since 9/1 followed by our picnic dinner (6:45 pm ) – bring your own dinner to enjoy or order pizza from the Temple – and concludes with Shabbat services with the ShabbaTones, our Temple band, at 7:30 pm. As a special treat, there will be complimentary popcorn, cotton candy and Safari shaved Ice!



### **Tisha B'Av – A New Vision**

Tisha B'Av, observed on the 9th (tishah) of the Hebrew month of Av (Saturday, August 10), is traditionally a day of mourning. This year, as we remember the many tragedies our people have suffered and survived, we will also focus on Resilience: how to recover from disaster and trauma today.

Traditionally, Tisha B'Av is the darkest of all days, a time set aside for fasting and mourning the destruction of both ancient Temples in Jerusalem. In the synagogue, the Book of Lamentations is chanted, as are kinot, which are dirges written during the Middle Ages. In addition, passages are read that deal with the destruction in 586 B.C.E. and 70 C.E. in Jerusalem of the First and Second Temples.

Although some historians dispute whether both Temples were destroyed on this day, Tisha B'Av has become a symbol of Jewish suffering and loss. Over the centuries, other tragic events have come to be commemorated on this day, including the brutal massacres of the Crusades, the Jewish expulsion from Spain, and the Holocaust.

Today, Tisha B'Av stands as a day to reflect on the suffering that still occurs in our world. On August 10, join our clergy as together we explore how one can become resilient as a response to tragedy and suffering. The evening begins at 7:30pm and all are welcome

## TIKKUN OLAM

## Community Service Projects



## LEND A HAND

Temple Beth Ami Community Service Projects

Thank you in advance for your support! (For information on additional TBA community service projects, visit [bethami.org/groups/TO](http://bethami.org/groups/TO).)

## VOLUNTEERS NEEDED

- **Interfaith Works Women's Center Meals Week, July 28 – August 4** - Volunteers needed to help provide meals/supplies for this Rockville women's shelter 7/28 – 8/4. For more information or to volunteer, contact Jeanne Kahn at [jeannekahn@aol.com](mailto:jeannekahn@aol.com), Elizabeth Joseloff at [joseloff@hotmail.com](mailto:joseloff@hotmail.com), or Amy Weinberg at [zatsky@msn.com](mailto:zatsky@msn.com).
- **Interested in Tikkun Olam activities at TBA?** - The Tikkun Olam Committee (TBA's community service committee) will hold its annual planning meeting on Tuesday, July 16, 6:30 pm, at Mark & Arlynn Joffe's house (dinner included). We'd love to have you join us. For more information or to RSVP to attend, contact Mark Joffe at [marksjoffe@gmail.com](mailto:marksjoffe@gmail.com) or Joanne Brodsky at [brodsky.joanne@gmail.com](mailto:brodsky.joanne@gmail.com).
- **Heads Up re Rise Against Hunger Project at TBA on September 8** - On Sunday, September 8, TBA will host a special project to address world hunger. We'll need LOTS of volunteers, so please mark your calendars. This is a great activity for families (ages 5+ can participate) and everyone else! Watch for more information and online registration in August. To learn more in the meantime, visit <https://www.riseagainsthunger.org/>, or contact Debbie Ginsberg at [dlgig@yahoo.com](mailto:dlgig@yahoo.com).
- **Help Needed for English as a Second Language Program** - Child care providers and tutors ages 14+ needed this fall for the Language Outreach Program. (SSL hours available.) For more information on this and other Community Reach of Montgomery County (formerly CMR) volunteer opportunities, contact Andrea Wink at [andreakwink@cmrocks.org](mailto:andreakwink@cmrocks.org).

## COLLECTIONS

## THANK YOU FOR SUPPORTING THESE DRIVES!

- **School Supplies for South Lake Elementary School Students** - Please bring these urgently needed items to the box

in the Temple lobby through August 16, including during the Picnic Shabbat on July 5: new/gently used backpacks, composition notebooks (marble), pencils, pencil pouches, scissors, rulers, and glue sticks. These items will be distributed to students whose families are unable to afford such purchases.

- **Teddy Bear/Stuffed Animal Drive** - From August 23 – September 27, including at the August 30 Picnic Shabbat, we'll collect stuffed animals (new only, please) for the Montgomery County Family Justice Center in Rockville. They will be given to children exposed to domestic violence so they can have something soft to snuggle during a difficult time.
- **Keep Saving those Box Tops for Education (BTE) labels during the summer, too** - Help South Lake ES turn these little pink labels into cash for needed items and supplies. Thank you for bringing your labels to the collection box in the Temple lobby throughout the summer. Questions? Contact Bernard Silverstein at [cynbern@verizon.net](mailto:cynbern@verizon.net).
- **Healthy Food Drive continues during the summer** - Please bring cans (preferably 12 oz. or larger) of tuna, chicken, or salmon (no Spam, please) and fruits in 100% juice (not in syrup, please) to the box in the Temple lobby. Benefits families served by the Manna Food Center and Nourish Now.

All accounts for this fiscal year, July 1, 2018 – June 30, 2019, should now be paid in full. It is very important to us that everyone who wants to be is able to be members of our Temple community. We are here to help you, but we need to hear from you. Unless our Executive Director, Janice Rosenblatt, is contacted by you, all accounts not paid in full for the past fiscal year (July 1, 2017 - June 30, 2018) will be resigned as of July 1.

## Torah/Haftarah Chanters for the High Holy Days Needed

Learn special High Holy Days Torah trope. Knowledge of Hebrew is a must. Training will be held over the summer. Contact Cantor Eschler at [cle@bethami.org](mailto:cle@bethami.org) or Susan Neumann at [spn@bethami.org](mailto:spn@bethami.org) or 301-340-6818.



## BROTHERHOOD *News*

Greetings Brothers and Temple members! I am excited to report that we had a fantastic Brotherhood Golf outing at Worthington Manor in May in support of Rebuilding Together Montgomery County (RTMC)! Following a week of rain, the weather cleared (well mostly cleared), and a day of golf and camaraderie was enjoyed by all. It was great to see everyone compete at their highest levels – as always there were awards for the teams with the highest and lowest rounds and pretty much anything in between.

The Brotherhood golf outing had a banner year! We were able to contribute \$2000 to Rebuilding Together Montgomery County. Thank you to all the donors, sponsors,

and volunteers - lead by Peter Cantor and his minions: Josh Carin, Steve Feldman, Ira Greenspan (and Marlo), Matt Rosenstock, and others I might have missed. Special thanks to Roger Rothman, RTMC organization, coordinator, project manager and TBA member. Roger became involved with Rebuilding Together in the early 1990's as a volunteer and has been our team leader every year. Other revenues from the event allows us to fund kiddish cups for our Temple Beth Ami B'nai Mitzvah, camp scholarships, Brotherhood Brunches, and more.

I want to conclude this month's Chadashot by thanking Robert Oshinsky for his continued leadership and management

of the Brotherhood Bagel Bar Café. This year, the synagogue allowed us to relocate the café to the front entrance, and that has turned out to be a fantastic location by allowing us to serve bagels, coffee and donuts to a much larger (and hungry) group of students and parents. Consequently, there's a renewed sense of excitement around our Bagel Bar. But with increased popularity and excitement, we need more assistance to help setup, serve, and clean up. So, please, don your Bagel Bar jersey (Rob will get you one if you do not have) and help out - it's also lots of FUN!!

**Steve Roberts**

TBA Brotherhood Prez



## WOMEN OF TEMPLE BETH AMI

### News

We hope that everyone is enjoying the summer! Please let us know if you have ideas for new programs for the upcoming year. We hope to hear from you! We can be reached at [womenoftemplebethami@gmail.com](mailto:womenoftemplebethami@gmail.com).

#### With Appreciation

Thank you to all of our WTBA members, Temple members, and their friends for the support this past year! We enjoyed another successful year filled with fun events, social action projects, and service to the Temple and our community.

#### For Our Temple

- Judaica Shop
- Kippot sales
- Book Club
- Purim Café
- Mah Jongg Tournaments
- Women's Seder – co-sponsored with the Women of Washington Hebrew Congregation
- Temple financial support and appreciation
- Newlywed gifts
- Yoga classes
- Mah Jongg cards
- Women's health speaker
- Co-sponsored brunch with Brotherhood
- Weekly drop-in Mah Jongg games
- Canasta lessons
- TBA Annual Appeal donation

#### For Our Members

- Membership Brunch featuring WRJ Representative to the UN and fabulous silent auction
- Board training
- Ladies Night Out
- Financial assistance to attend WRJ District and National Conferences
- New and continuing friendships and support

#### For Our Youth

- Bar/Bat Mitzvah gifts
- NFTY scholarships
- Camp scholarships

- Pre-School Hanukkah Party
- College Connection donation
- Confirmation gifts
- Donation to Machane TBA
- Donation to Nursery School

#### For Our Local Community

- Made fleece hats, scarves and neck warmers for homeless people
- Stuff-A-Duff for children in foster care
- Sorted food at Manna
- Provided meals for Women's Shelter
- Collected personal items for girls and women in homeless shelters

#### For Our World Community

- Donations to Days for Girls and Women of Reform Judaism
- Made survival bracelets and cards for Operation Gratitude

#### Pampered Chef Party

Temple members and their friends are invited to join us for a Pampered Chef Party on Wednesday, July 10 from 7 - 9 pm at the Temple. Come try out the newest kitchen tools and enjoy some delicious food! It is never too early to shop for holiday gifts. Please RSVP to Rhona Arbit at [womenoftemplebethami@gmail.com](mailto:womenoftemplebethami@gmail.com) or 301-279-2630 by July 1.

#### WTBA Community Building and Information Session

WTBA will be holding a WTBA Community Building and Information Session at the Temple on July 14 from 9:30 am to 1 pm. Please join us as we plan for the coming year and socialize together. A light breakfast and a full lunch will be provided. Please RSVP by July 1 to Judi Goozh at [paul-judig@verizon.net](mailto:paul-judig@verizon.net).

#### WRJ District Summer Interim

All WTBA members are invited to join us at the URJ 6 Points Creative Arts Camp in West Chester, PA for our WRJ Mid-Atlantic

District summer interim meeting on July 19-21. The theme of the weekend is "Girls Just Want to Have Fun!" We'll be staying at a nearby hotel, spending time at the camp and sharing the fun with members of the Atlantic District. Please contact Rachel Maryn at [rmayn@verizon.net](mailto:rmayn@verizon.net) for more information.

#### Women's Shelter Meals

Temple Beth Ami will once again be preparing and serving meals during the week of July 28 -August 4 for the residents in the Interfaith Works Women's Center in Rockville. The IW Women's Center is a 70-bed emergency women's shelter that provides housing, medical, mental health, and social services.

WTBA will be preparing breakfast, lunch, and dinner on Monday, July 29 for the shelter. We will meet in the Temple's kitchen at 3 pm on Monday, July 29 to prepare the food and then as a group serve dinner at the shelter from 6 - 8 pm. Please contact Jeanne Kahn ([jeannekahn@aol.com](mailto:jeannekahn@aol.com)) to sign up to participate.

There are also lots of other opportunities to provide food and serve meals throughout the week.

Please contact Jeanne Kahn ([jeannekahn@aol.com](mailto:jeannekahn@aol.com)), Elizabeth Joseloff ([ejoseloff@gmail.com](mailto:ejoseloff@gmail.com)), or Amy Weinberg ([zatsky@msn.com](mailto:zatsky@msn.com)) to volunteer.

#### Mah Jongg Tournament

Please join us on August 25 from 10 am – 4 pm for WTBA's semi-annual Mah Jongg tournament. For those players who would like a more relaxed experience, we are adding a half-day mini tournament to this event. This mini tournament will consist of 3 rounds with 2 games per round. Highest score will receive a cash prize and all players will be eligible for door prizes. A continental breakfast and deli lunch with homemade

## NURSERY SCHOOL NEWS

*Paula Sayag,  
Director*



### 20 years of Nurturing Temple Beth Ami Nursery School Children

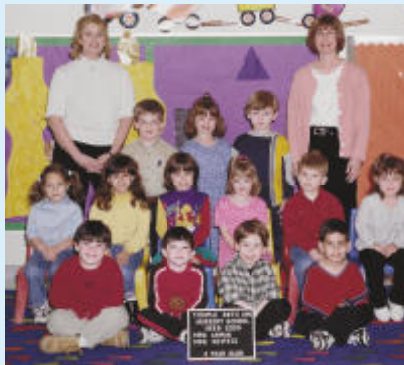
Two very dedicated educators have devoted their careers to shaping a new generation of Jewish families. We share their stories, as they retire from being TBANS teachers.

Karen Asman was already a member of TBA. Rabbi Luxemburg officiated at her wedding, as well as at the Brit Milah of each of her two sons. Both boys attended TBANS. When Zach was 10 and Matt was 12, she was excited to join our staff as a lead teacher for the first year of the 3rd class of 4-year olds. Karen had a strong background in education and was perfectly suited for the challenge. 20 years later, she is still finding joy in her work.

Karen says she will miss the hugs and smiles she gets from children every day, and the camaraderie and support she feels every time she walks in the nursery school entrance. She says the best part of the last 20 years was that coming to work never felt like coming to work, but like coming to play with friends!

Now, Karen has decided it's time for her "to find new ways of appreciating life." We all know she will spend more time at the beach! She also hopes to go to museums on weekday mornings, visit family in Florida on non-holidays, take adult education classes at TBA, and

volunteer. She will still spend time with TBANS by ushering at High Holiday Services and substitute teaching. Thank you, Karen, for your insatiable love of learning and never-ending enthusiasm for early education.



Marsha Diamond was working at another preschool when a TBANS teacher/friend called to tell her of a job opening. Her son, Steven, had attended school here, so she was excited to make the switch. Marsha worked as an Assistant Teacher with 4-5-year olds for 11 years. For the past 9 years, she has supported Kangaroos, Bets to Be, and Bets, as well as fulfilling a myriad of administrative tasks. In fact, Marsha says her favorite part of working at TBANS was the variety, sharing her days with so many different children and teachers and getting involved in the organizational aspects of the school too.

Marsha's greatest sense of accomplishment came from creating "More Than Numbers," a program to explain basic mathematical concepts to Dalet children.

She is thrilled that she ended her time at TBANS by integrating her math program into each Dalet classroom.

Marsha is ready for more golf! But in addition, she is traveling to Italy in September. She hopes to exhibit her hand-sewn creations at more craft shows. She looks forward to volunteering, perhaps with Project Linus and Fairy Tale Bridal, as well as serving as a "baby rocker." We wish her luck fitting all that on her calendar! Thank you, Marsha for always saying "Yes!" and helping TBANS run smoothly in so many ways.



Our two retirees offer some reflections:

What advice would you give to the next generation of TBANS teachers?

Karen: All children have their own strengths and gifts. They are all such little individuals. Emphasize the positive as much as possible. Encourage a "growth mindset."

Marsha: You are giving the children

**CONTINUED ON PAGE 21**

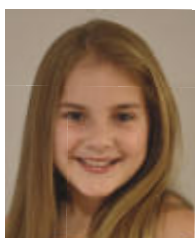


**B'NAI MITZVAH***Profiles*

Please join with us at Shabbat Services during the months of July and August as we celebrate with...

**JACOB BERNARD REISER,**

son of Michael and Rebecca Bahr Reiser, will become a Bar Mitzvah on Saturday, July 6. He is a seventh grade student at Robert Frost Middle School. Jacob has two older siblings Noah and Sydney



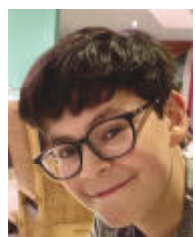
**ALINA MILLER,** daughter of Jamie and Rich Miller, will become a Bat Mitzvah on Saturday, July 13. She is a rising eighth grade student at Ridgeview Middle School. Alina has an older sister, Mica, and an older brother, Bo. For her Mitzvah project, Alina will be collecting donations and volunteering with

Comfort Cases, an organization that supports foster children by providing them with a nice bag filled with new comfort and essential items.

**ELIZA KLAKE NADLER,**

Daughter of Marcie and Simon Nadler, will become a Bat Mitzvah on Saturday, August 24. She is a rising seventh grade student at Julius West Middle School. Eliza has three older sisters, Allison, Emily and Gabrielle. For her Bat Mitzvah project, Eliza has been volun-

teering for the past year at Birthday Cakes 4 Free, an organization that provides homemade birthday cakes for underprivileged children and adults.

**ELIAS BECHKY,**

son of Perry Bechky and Sirina Tsai, will become a Bar Mitzvah on Saturday, August 31. He is a rising eighth grade student at Julius West Middle School. Elias has an older sister, Aviva.

**SIMCHAS***Mazel Tov to...*

**Maxwell Tucker, Nathan Hirschfeld and Noah Sexter** each on becoming a Bar Mitzvah

**Samara Ginsberg, Madison Moorhead and Meredith Abramson** each on becoming a Bat Mitzvah

**Rebecca Bethany Golub,** daughter of **Jonathan Golub and Cindy Golub,** on graduating from Boston University's School of Communication. Rebecca is working in PR for Dan Klores Communications in New York City

**Brian Gaynor,** son of **Rhonda and Mitchell Gaynor,** on graduating from the University of Washington with a Doctorate in Physical Therapy degree.

**Connie Heller** on the marriage of her daughter, **Laura Heller, and Brandon Key**

**Exabe and Adilio Guzman** on the birth of their son, **Justin Jamal Guzman**

**Susan and Edward Dosik** on the birth of their grandson, **Charles (Charlie) Randall Kohr**

**Bobbie Chait** on the birth of her grandson, **Brayden Chait Luanne and Marc Stanley** on the birth of their granddaughter, **Estee Isabella Stanley**

**Christine, Matt and Hannah Baron** on the naming of their daughter and sister, **Leah**

**Ellen Davis** on her appointment to the Board of Directors of the Charles E. Smith Life Communities

**To our Congregation for being accepted into the URJ's PEECCE** (Project Excellence for Early Childhood Congregational Education Pilot) program.

**To our Graduating Seniors and their families**  
**Rafael Del Cid Castro** on becoming a US citizen

**Special Thanks To:**

**Joshana Erenberg** for the beautiful music she has added to our Congregation

The wonderful **ShabbaTones**

**Our Shabbat Hospitality Committee**

**The Cookie Brigade**

**Jeanne Kahn** for helping with the Oneg

## MACHANE TBA NEWS

*Kim Roberts,  
Director*



### Calendar

#### **Mon-Fri, July 1-3**

Taste of Kayitz & Kayitz-Week 3

#### **Mon-Fri, July 8-12**

Taste of Kayitz & Kayitz-Week 4

#### **Mon-Fri, July 15-19**

Taste of Kayitz & Kayitz-Week 5

#### **Mon-Fri, July 22-26**

Taste of Kayitz & Kayitz-Week 6

#### **Mon-Fri, July 29-Aug 2**

Taste of Kayitz & Kayitz-Week 7

#### **Mon-Fri, Aug 5-9**

Taste of Kayitz & Kayitz-Week 8

#### **Mon-Fri, Aug 12-16**

Kayitz-Week 9





## MACHANE TBA

*Year in Review*



## Send the Sweetest of all Rosh Hashanah greetings to your family, friends and business associates.

We will ship a personalized package, including festive 8 ounce jar of Kosher clover honey, a gift card and the blessing for the New Year, anywhere in the United States. The package will arrive in time for Rosh Hashanah.

Ordering is quick and easy online. Your cost is still only **\$12 per jar** and a portion of your purchase benefits Temple Beth Ami.

Visit [www.bethami.org](http://www.bethami.org) and click on the honey link. **Order online by July 31st** to avoid extra shipping fees. Contact Gail Brodsy at [gsb@bethami.org](mailto:gsb@bethami.org) or 301.340.6818 to request a honey order form (**mail order deadline is July 24th**) or if you have questions. Thank you for your support!



### JULY 1 – THE START OF THE NEW FISCAL YEAR

“The members of the congregation must nurture one another because they need one another. They simply cannot do it alone.” – Rabbi Lawrence Kushner

The Temple depends on the support of all its members. In order for us to continue to meet the religious and pastoral needs of all our members, and to provide programs, education, caring community, social events, financial assistance, and more for all our congregants, we need to be able to count on all of our members to pay their annual commitment (dues), whether full or adjusted.

#### IMPORTANT CHANGES:

- Invoices for the Annual Commitment for FY20 (July 1, 2019 - June 30, 2020) will be mailed in early July.
- Please note that all children in Machane TBA will have been globally promoted; this is an accounting function and will appear as part of your commitment – you must still register for

Machane TBA (contact Bobbie Chait at [bac@bethami.org](mailto:bac@bethami.org)).

- Anyone needing financial assistance must complete the forms and return them no later than June 30 (contact [FinAid@bethami.org](mailto:FinAid@bethami.org) for assistance)

Thank you for your continued support of Temple Beth Ami. Without YOU, we could not be here to do what we do.

### NEWLYWEDS

Congratulations on your recent marriage. We are so happy for you. If you are the child of a Temple members and were married after September 2018, we are giving you a gift of a year's free membership. Please go on line ([www.bethami.org](http://www.bethami.org)), download a membership form and send it to the Temple office. Your membership includes your High Holy Days tickets for this year. If you received a membership this past year, please remember that you must rejoin the Temple as your membership expires on June 30.



## COMMITTEE

## News

**Sometimes you just have to breathe, be inspired, reflect and get reenergized.**

I did that, along with 14 other congregants, at the Consultation on Conscience in Washington, DC. The Religious Action Center of Reform Judaism ([www.rac.org](http://www.rac.org)) created the Consultation to encourage people to become more actively involved in social justice activities. The RAC is terrific at what they do.



Over 1000 people gathered to learn, hear speakers and lobby on the Hill. (I did two out of three) I also connected with people across the country and heard their stories.

We are so lucky that the RAC is located in Washington, DC and we can volunteer and work with them all year. The RAC mobilizes around federal, state, and local legislation; supports and develops congregational leaders; and organizes communities to create a world overflowing with justice, compassion, and peace. On the RAC site, there is a good article about why advocacy and activism are such Jewish activities. <https://rac.org/advocacy-activism-why-advocacy-central-reform-judaism>

I had never been to the Consultation before and I went for selfish reasons....I needed some inspiration and I needed to hear from people who are making a positive difference. During the 3 days of the conference, we heard impassioned and important speeches. Desmond Meade was instrumental in getting legislation passed to restore voting rights to Florida felons. Sister Norma Pimentel works to help refugees and migrants. She helps with food, clothing and whatever is needed. We also heard from Rabbi Jonah Pesner, the director of the RAC. That was the beginning of Day 1!

There were workshops on many different issues. My favorite workshop was entitled "A Culture of Respect: Fostering Sacred and Civil Conversation within a Diverse Congregation". Temple

Emanuel in Dallas has "adopted" a neighboring community, spent time with members of the community and is helping them by teaching English to adults, providing a food pantry, getting them information on citizenship and much more.

Day 2 began with a prayer service. Then, we heard from the Reverend Al Sharpton, whose speech surprised me in a very positive way. He talked about the need for us to work together to eradicate antisemitism and racism. He was followed by interviews with three students, working tirelessly for change in the areas of gun violence, voter registration and immigration. They were so articulate and had compelling, personal stories. There were more workshops.

Over lunch, members of our delegation talked with two people from Birmingham, Alabama. They described life as Jews in Birmingham. We all were jarred by their descriptions of the antisemitism and separation they feel even as they told us how much they love their synagogue and community. Their daily reality is so different from ours and yet, they were so positive. During the afternoon, there was another plenary and then, training for lobbying.

On the third day, we heard Speaker Nancy Pelosi, four members of Congress and a representative from the White House. The RAC has been a force in our country for a long time. After the morning plenary, 700 attendees went to the Hill to lobby.

Throughout the conference, I met interesting, involved people and felt such pride in the activism I saw and heard about. I hope that more of us will attend the next Consultation in two years! Together, we can build the world we want.

If you are interested in activities at TBA here are some ideas:

- A new book has been published, *Moral Resistance and Spiritual Authority*. The book is about our Jewish obligation to social justice and has essays on a variety of issues. The book should help each person who reads it to be inspired, reflect and get reenergized
- The Tikkun Olam committee has many projects. Check them out in the Chadashot
- If you are interested in finding out about opportunities to advocate on issues, contact Jack Rosenthal, Co-Chair of our Critical Issues Forum, at [Jack@Rosenthalplace.com](mailto:Jack@Rosenthalplace.com)

~Lynn Karpay

## PHOTO REVIEW

### *TBANS Year End*



## 2019 TBA VOLUNTEER(S) OF THE YEAR AWARD

### *Ally Kahler*

She has chaired the Purim Carnival for several years which is a huge undertaking including weekly meetings, ordering supplies, working with outside vendors, volunteer coordinating, set up/clean-up of the event etc. In addition, she has been the choreographer for the theater productions, often choreographing the Purim Spiel at the same time as chairing the carnival.

### **Purim Project**

*Stephanie Oshinsky, Sarah Freedman, Moira Carin, Lois Fishman, Ann Goldensohn, Ellen Bortz and Susan Kassell*

This group runs the enormous and highly successful project which has helped to build community as well as raise funds for Temple programs and projects. Months of work goes into setting it up, advertising it, data entry, preparation of boxes and distribution

### *Lori Rosenstock*

Lori worked to increase the Temple's visibility through Facebook. Knowing that so many of our members spend time trolling social media, Lori volunteered her time to post articles, photos, events and the like on the Temple's Facebook page, increasing our visibility. People "like" many of the posts, suggesting that they are aware of all that we're doing. This allows the Temple to gain some recognition in the virtual world.

### **Website Committee**

*Benita Marcus, Jerry Callistein, Rhona Arbit and Lauren Bogart*

Responsible for creating our wonderful new website, transferring and editing data, and training staff in using the new site

## NEW! Temple Beth Ami Immunization Policy

The Union for Reform Judaism affirms that, in the case of mandatory immunizations, congregations follow one of Judaism's most sacred commandments, pikuach nefesh - the idea that the preservation of life takes precedence over almost all other Jewish law. Reform Jewish religious tenets prioritize protecting the health of all individuals, the most medically vulnerable members of the community, and the community as a whole, and do not provide a basis for a religious exemption from mandatory immunizations.

Temple Beth Ami's preschool (TBANS), camp (Kayitz), and religious school (Machane) are committed to these Jewish values. Therefore, for the health, safety and welfare of both staff and students, TBA follows all the State of Maryland vaccination requirements for students entering our program. Documentation of compliance with these requirements shall be provided for all students upon entry to TBANS, Kayitz and Machane. TBANS will monitor on-going vaccination compliance

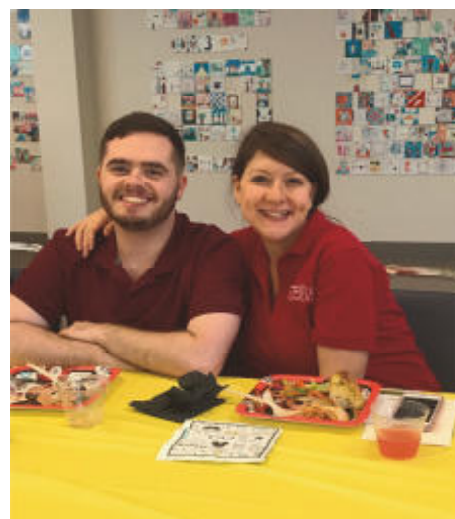
for children 18 months to 5 years who are enrolled in TBANS. This follows the standards and policies of the American Academy of Pediatrics, the Centers for Disease Control and the American Council on Immunization and Prevention. There are no religious or personal exemptions to this policy. Medical exemptions will be reviewed by the Early Childhood (TBANS) Director, the Kayitz Health Supervisor, and the Director of Education, with medical consultation as necessary.

**IMPORTANT INFORMATION FOR TBANS, KAYITZ, MACHANE AND TBA High FAMILIES.** All families in Machine must complete the Immunization form for compliance with the State of Maryland vaccination requirements; the form can be found on the website ([www.bethami.org](http://www.bethami.org)) or you can contact Bobbie Chait, Machane TBA and Kayitz Registrar at [bac@bethami.org](mailto:bac@bethami.org). All families in TBANS must present the necessary immunization forms. No child will be allowed in class without our having the completed forms. A form must to be completed for each child in your family. For TBANS information, please contact Paula Sayag at [psg@bethami.org](mailto:psg@bethami.org)



## PHOTO REVIEW

*Rebuilding Together, Machane Kehillah, TBA High, Faculty Brunch, TBANS Scoop Day*





**COMMITTEE***News***JFGH Residents Come to TBA for Sunday Afternoon Crafts and Fun**

On Sunday, May 5, seven women residents of the Bass/Reiner and Brown Jewish Foundation for Group Homes (JFGH) houses came to TBA for an afternoon of crafts and fun. With the help of TBA volunteers who worked one-on-one with them, the women decorated mason jars and filled them with colorful artificial flowers. These were nice gifts for them to give on Mother's Day or keep and enjoy for themselves. Snacks and bingo rounded out the event, which was fun for all! The Tikkun Olam Committee has been conducting crafts/bingo programs and hosting JFGH residents at Spirit of Shabbat Services periodically. The women love the events, and the volunteers find it very rewarding. If you'd like to be added to the list of potential volunteers for these activities, contact Charlotte Zuckman at [char.zuckman@comcast.net](mailto:char.zuckman@comcast.net).

**Art Club at South Lake**

Beginning in October, the Art Club at South Lake Elementary School will once again be sponsored by Temple Beth Ami members. A group of volunteers meet with South Lake students in Grades 3-6 on Tuesday and Thursday afternoons after school from 3:30 to 4:45 p.m. Volunteers are needed to help with this popular club. No art experience is needed; just a sincere interest in helping young students develop their artistic talents. Interested in learning more: contact Susan Stern at [sssterndragon@gmail.com](mailto:sssterndragon@gmail.com) or Sue Fox at [fdsgc@aol.com](mailto:fdsgc@aol.com)

**SEPTEMBER CHADASHOT  
DEADLINE JULY 25**

**PRESIDENT** CONTINUED FROM PAGE 2

that they had brought these to the overlook. We walked over to talk with them and wish them Shabbat Shalom. That was all they needed; they invited us join them, and they enthusiastically welcomed us into their group. We made the blessings over the wine and challah (it's much too windy there to even think about lighting candles) and sang a few songs with them. It was one of the best vacation sunsets we've ever experienced.

All of this reminds me that as we travel during the summer, let's remember that we don't need to leave Shabbat at home. You can celebrate Shabbat anywhere and doing so will likely become one of your more cherished memories of your summer travel.

When you see me in the fall, ask me where Lynn and I celebrated Shabbat this summer!

## COMMITTEE

### News

#### Tikkun Olam in Action

##### **TBA to Provide a Week of Meals to the Interfaith Works Women's Center July 28–August 4. Can You Help?**

TBA will provide breakfasts, lunches, and dinners for the Interfaith Works Women's Center July 28 through August 4, and we need lots of volunteers to help in this effort. You can help by providing store-bought food, preparing bag lunches, making a monetary donation, and/or by working together with others to prepare and serve dinner for the approximately 35–40 residents of this women's shelter during that week. It's a wonderful way to support those in need, and the women are very appreciative. This is a great Tikkun Olam activity for families, including those with teens, and students can earn SSL hours by volunteering. It takes LOTS of volunteers to make this week successful, and we hope you'll consider helping if you can.

Interfaith Works is a nonprofit organization founded in 1972 through a coalition of more than 165 religious congregations, with the goal of working together toward meeting the needs of the poor and homeless in Montgomery County. Interfaith Works provides a wide range of services, including a clothing center, an emergency assistance program, family programs, homeless services, and vocational and English literacy services. One of their programs to address homelessness is their Women's Center. This 70-bed emergency shelter for homeless women provides a temporary place to stay and assistance in finding permanent housing, medical and mental health treatment, social services, and employment. More than 300 women per year receive services through the Women's Center. TBA has been supporting the Women's Center for many years, including recently in their newer and larger facility on Taft Court in Rockville. The Tikkun Olam Committee provides funding for the food and coordinates meal preparation and serving during this week-long project.

For more information, to donate toward this project, or to volunteer to help with food preparation or serving, contact Jeanne Kahn at [jeannekahn@aol.com](mailto:jeannekahn@aol.com), Elizabeth Joseloff at [ejoseloff@gmail.com](mailto:ejoseloff@gmail.com), or Amy Weinberg at [zatsky@msn.com](mailto:zatsky@msn.com). More information and sign-up links to volunteer will be provided soon.

Thank you in advance for helping with this worthwhile and rewarding Tikkun Olam activity!

To learn more about Interfaith Works and other volunteer opportunities with the organization, visit [www.iworksmc.org](http://www.iworksmc.org).

---

#### **WOMEN OF TBA** CONTINUED FROM PAGE 7

desserts will be provided for participants of both tournaments. Look for the flyer in the Temple lobby or check the TBA website for more information. Please contact Rachel Maryn at [maryn@verizon.net](mailto:maryn@verizon.net) with any questions.

#### **Yoga Classes**

Please join WTBA's fall yoga classes beginning on Sunday, September 15. This multi-level yoga program including options for beginners as well as advanced students. No prior yoga experience is necessary. These classes will emphasize stretching, strengthening, and breathing.

The classes will be held on the following Sundays at the Temple from 2 - 3 pm: September 15 and 22, October 20 and 27, November 3 and 24, December 1, 8, 15, and 22. Our yoga instructors will be TBA members Monya and David Cohen, both who are Yoga Alliance 200-hour yoga teachers.

The cost for the 10-week session will be \$60 for WTBA and Brotherhood members and \$70 for non-members. All proceeds from the class will be donated to Supply for Kids, Shelter support, and the Rockville Days for Girls chapter.

Please dress in comfortable, stretchy clothes and bring a yoga mat, yoga belt, two yoga blocks, a water bottle, and a pillow, folded blanket or cushion to elevate your hips.

Please register online on the Temple website before September 15. For more information, please contact Monya Cohen at [mjcohen0636@gmail.com](mailto:mjcohen0636@gmail.com).

#### **Book Club**

Please save the dates for the upcoming WTBA Book Club meetings as the group will begin to meet again in the fall. The WTBA Book Club will meet on Tuesday evenings at the Temple from 7:30 - 9:00 pm.

October 15, 2019, December 3, 2019, February 4, 2020, April 28, 2020, May 26, 2020.

For questions or to be added to the WTBA Book Club contact list, please email Terry Steinberg at [steinberg\\_4@comcast.net](mailto:steinberg_4@comcast.net).

### Membership Dues for 2019-2020

Membership dues are our primary source of funds for our many programs and projects. As a WTBA member, you will automatically also become a member of Women of Reform Judaism (WRJ). WRJ strengthens the voice of women worldwide and empowers them to create caring communities, nurture congregations, cultivate personal and spiritual growth, and advocate for and promote progressive Jewish values.

Basic dues (Sarah) remain at \$45. If you would like to make a donation, you may choose a membership level of \$54 (Rebecca), \$90 (Leah), \$180 (Rachel), or \$252 (Miriam). WTBA dues can be paid along with your Temple bill, online, or with the membership form in the lobby. You do not need to be a temple member to join our sisterhood. When you join WTBA, our annual membership brunch is included.

We hope that every woman who is affiliated with Beth Ami will join WTBA and help to support our programs! Please contact Membership Vice-President Jeanne Kahn at 240-994-6804 or jeannekahn@aol.com with any questions.

### Manna Food Center

A huge thank you to all the volunteers who helped sort food at Manna on May 9th: Ruth Sevach, Danielle Konigsberg, Jake Konigsberg, Mark Silverman, Dan Stander, Susan Bloom, Burt Amernick, Marc Zeid, Ed Prystowsky, Dave Gavin, and Eric May.

A special thank you as always to Rhonda Gaynor for coordinating TBA food sorting at Manna. Keep an eye out for more opportunities to come to volunteer at Manna.

### Confirmation and Graduation Congratulations

Mazel Tov to the young men and women from Beth Ami who were confirmed in May. We hope the Tanach you each received from WTBA and Brotherhood will become a well-used source of joy and continued learning. We also congratulate our high school and college graduates!

### WRJ Social Justice Conference

Thank you for helping WTBA board members Rhona Arbit, Melissa Bauman, Judi Goozh, Jeanne Kahn, Rachel Maryn, and Sue Sailer attend the Women of Reform Judaism inaugural Social Justice Conference in May. All of the workshops were interesting and enlightening. Highlights included eating and praying together with old and new friends; listening to and singing with musical artists Julie Silver, Stacy Beyer, and Marci Geller at the "Together as One" concert; and hearing Ruth Messinger, Global Ambassador and former President of American Jewish World Service, discuss social justice in the context of world Jewry.

### Ongoing Projects



**Kippot** for B'nai Mitzvah, Brides and Grooms are available at discount prices through WTBA. View styles at [www.kippah.com](http://www.kippah.com), then

contact Eve Lader at 301-938-0200 or [evelader@gmail.com](mailto:evelader@gmail.com) to place your order.

WTBA will present **TBA newlyweds** as a wedding gift the beautiful book On the Doorposts of Your House: Prayers and Ceremonies for the Jewish Home. Please email Barbara Ranhand at [Barbara.ranhand@verizon.net](mailto:Barbara.ranhand@verizon.net) if you have information about any Temple families who are planning a wedding.

**Drop-in Mah Jongg games**, held at the Temple every Monday afternoon from 1 – 3 pm when the Temple is open, will continue during the summer. Please contact Rachel Maryn at [rmayn@verizon.net](mailto:rmayn@verizon.net) for more information or to be added to the email list.

**Save the Date: Membership Brunch** – Sunday, September 8 at the Temple from 9:30 am – 12:00 pm.

### Elizabeth Joseloff

WTBA Chadashot article editor  
[ejoseloff@gmail.com](mailto:ejoseloff@gmail.com)



### GRADUATES

Did your child recently graduate? Please share the news with your congregational family. Send your child's name, where s/he is graduated from, and plans for the fall. We love to know what our "family" is doing.

**Friday, August 9**

6:30 pm Tot Shabbat

7:30 pm Erev Shabbat Service

**Saturday, August 10**

10:00 am Shabbat Minyan

7:30 pm Erev Tisha B'Av Service

**Sunday, August 11**

10:45 am Sunday Minyan

**Friday, August 16**

6:30 pm Spirit of Shabbat

**Saturday, August 17**

10:00 am Shabbat Minyan

**Sunday, August 18**

10:45 am Sunday Minyan

**Friday, August 23**

7:30 pm Erev Shabbat Service

**Saturday, August 24**

10:30 am Shabbat Service

Bat Mitzvah: Eliza Nadler

**Sunday, August 25**

10:45 am Sunday Minyan

**Friday, August 30**

6:45 am Welcome (Back) Picnic  
Shabbat

**Saturday, August 31**

10:30 am Shabbat Service

Bar Mitzvah: Elias Bechky

**Sunday, September 1**

10:45 am Sunday Minyan

\*On Shabbat mornings when there is not a service scheduled in the sanctuary, a short (10 – 20 minute) minyan service, including the recitation of kaddish, will be conducted by the clergy in the Yarden social hall immediately following Torah study at approximately 10am. If Torah study is still going on when you arrive, please feel free to come in and listen.

whose rabbinates we have admired and from whose example we have learned. There is a warm camaraderie and a great deal of mutual respect.

What you might not expect is the number of retired rabbis who are disgruntled and disappointed with the relationship – or lack thereof – with the congregations that they served prior to retirement. Some feel cut off from both congregation and community, isolated professionally and personally. Others feel neglected and disrespected by successors and the new generation of Temple leaders and membership who do not recognize or even know of the contributions these colleagues made to their congregation over long and distinguished careers. It is sometimes hard to hear the pain voiced by these rabbis and their spouses. In some cases there is real and justifiable anger resulting from unfair treatment of rabbis by their congregation. It has become such a matter of concern within our entire Reform Movement, that a special committee has been created to address the issues of predecessor/successor relations, the proper role of retired rabbis and rabbis emeritus who remain in their communities, the relationships and obligations of such rabbis and their congregations to each other.

I choose to comment on this because I enjoy precisely the opposite and it saddens me that many of my colleagues do not enjoy the regard and status in their congregations that I do at Temple Beth Ami. After three years of my retirement into emeritus status, I think we can safely say that our congregation “did it right”. We found a wonderful and worthy new senior rabbi. Our clergy team continued to shine. Our lay leadership has charted new and innovative directions for the congregation, and Temple Beth Ami has remained a vital and important part of our own Jewish lives and in the life of our greater Jewish and general community.

This is not always the case. Transitions in rabbinic leadership which is a natural part of the life-cycle of congregations can result in turmoil and disruption. Our experience has been just the opposite. From where I sit, I think our congregation has been strengthened. And the fact is, there are many in our community and throughout our movement who look hold up Temple Beth Ami as “a good example” in this regard and long with the many other aspects of congregation life for which our congregation is respected.

Sometimes, it is necessary for us to stop, reflect and appreciate how our congregation has succeeded in its various aspects and efforts. It is important for us to celebrate the accomplishments that result from the thoughtfulness, support, generosity and general “menschlichkeit” (common decency) that characterizes our congregation and its membership -- it something in which we should all take pride. I do and I am very grateful to remain a part of it.

As we turn out attention to vacation activities, Barbara and I wish everyone a happy and healthy summer. I hope all will return from summer renewed and refreshed, ready to enable our congregation to continue moving forward - in all respects - from strength to strength.



**TBANS** CONTINUED FROM PAGE 8

their first experience with Jewish education. Be their role model. Everybody at TBANS is here to help and everyone is very approachable and friendly.

What would you like to say to the TBA Community?

Karen: TBANS is the best Jewish school in the Washington area. TBANS is accepting of all children, with a welcoming atmosphere that is amazing.

And perhaps Marsha summarized it best: Keep doing what you're doing!

Thank you to Karen and Marsha for sharing their talents and passions with us for 20 years, and for your continued connections to the children, families, and staff of Temple Beth Ami Nursery School.

*"May the memory of these  
Righteous  
be for a blessing"*

We mourn the recent death of:

Jules Kluger  
father of Jeri Berman  
Gail Sheinin  
mother of Todd Sheinin  
Harry Simpson  
father of Michelle Halber  
Andrew L. Miller  
father of Elizabeth Gensler  
Janet Lee Steinberg  
aunt of Jon Golub  
Rico Carpio  
uncle of Moira Carin  
Jeanne Defibaugh  
grandmother of Roberta Schneider  
Edith Goldfein  
grandmother Rebecca Jackson  
Edith Martin  
mother of Carol Martin  
Jean Meyer Kluger  
mother of Jeri Berman  
Doris Zirman  
mother of Jodi Schwartz  
grandmother of Michael Schwartz  
Philip Carin  
father of Josh Carin  
grandfather of Becca and Jake Carin  
Robert Defibaugh  
father of Roberta Schneider  
Imogene Lehman  
mother of Toby Lehman

*"In the blueness of the sky and in the  
warmth of summer, we remember them."*

Excerpt – Roland B. Gittelsohn

**No one has to do it alone.**



**Garden of Remembrance**

GAN ZIKARON MEMORIAL PARK

17 YEARS OF CARING SERVICE AND DEDICATED SUPPORT TO  
THE JEWISH COMMUNITY OF GREATER WASHINGTON

Call Janice Rosenblatt at Temple Beth Ami, (301) 340-6818,  
or visit [www.gardenofremembrance.org](http://www.gardenofremembrance.org)

Partner Agency of  
The Jewish Federation  
OF GREATER WASHINGTON



## **WE GRATEFULLY** *Acknowledge*

A contribution to a Temple fund is a meaningful way to support the Temple community while honoring a birthday, recuperation, wedding, graduation, birth or any special occasion. Donations may also be made in memory of a loved one. For a minimum \$10 donation, an acknowledgement will be sent to the person you wish to honor or the family of the deceased. If you have any questions about existing funds or wish to establish a fund, please call Janice Rosenblatt, Executive Director, at 301.340.6818.

### **ADMINISTRATIVE FUND**

In honor of:

The Temple Beth Ami Office Staff by Jeanne and David Kahn

### **CAMPERSHIP FUND**

In memory of:

GAIL SHEININ, mother of Todd Sheinin, by Sue and Craig Cutter

### **CANTOR'S DISCRETIONARY FUND**

In honor of:

NOAH SEXTER on his becoming a Bar Mitzvah by Paul Mintzies and JL Levit

CANTOR LARRY ESCHLER by Lois and Seymour Fishman

CANTOR LARRY ESCHLER on preparing Izzy and Sammy Sophir for their B'not Mitzvah by Vanessa and Eric Sophir

With gratitude for the recovery of my daughter, JOYCE HARRISON, by Betty Lichtenstein  
CANTOR LARRY ESCHLER for his help over the years and especially for preparing and officiating at LAURA and BRANDON's wedding by Connie Heller

### **FAMILY EDUCATION AND LIFELONG LEARNING FUND**

In memory of:

JULES KLUGER, father of Jeri Berman, by Marcia and Don Kaplan

### **HOLOCAUST EDUCATION FUND IN MEMORY OF OSCAR POHORYLES**

In honor of:

RABBI JACK LUXEMBURG for participating in our son Noah's Bar Mitzvah by Reed and Joanna Sexter

### **LIVE & LEARN FUND IN MEMORY OF SALLY B. KERA**

In memory of:

EDITH MARTIN by her daughter, Carol Martin  
ARTHUR WILLCHER, father of Leslie Shapiro, by Barbara Strong and Michael Kielbiewicz  
EDITH MARTIN, mother of Carol Martin, by Barbara Strong and Michael Kielbiewicz, Lois Sbar

### **MACHANE TBA (RELIGIOUS EDUCATION) SCHOLARSHIP FUND IN MEMORY OF BUD LEVIN**

In honor of:

LINDA BURGIN for a great year at Machane TBA by Andrew Weinstein

JODY ROSENBLUM for a great year at

Machane TBA by Hannah Weinstein

SHIRA TASSIELLO for a great year at

Machane TBA by Andrew Weinstein

### **ONEG FUND**

Joanna and Reed Sexter in honor of Noah becoming a Bar Mitzvah

Ellen and Jon Bortz in memory of Ira Edelson

Ginny and Jim Michalowski in memory of Doris June Winkelman

Naomi Lichter and John Schmelzer in memory of Kurt Schmelzer

Ann Joseloff in memory of Hugh Joseloff

Marilyn Bier in memory of Lucille Dove

Kim and Rich Freedman in memory of Marshall Freedman

Susan and Fred Kleiman in memory of Burt Kleiman

Abbey and Kenneth Fagin in memory of Stanley Fagin

Judy Fox-Teppe and children in memory of Gary Tepper and Ida Zebrak

Dona Deutsch in memory of Marian Mase  
Mimi Roth and Zachary Roth in memory of Milton Roth

Livia and Don Weinstein in memory of Lilly Morpurgo

Elaine and Fred Gillespie in memory of Myron Gillespie

Anita Berns in memory of Esther Podolsky  
Roberta and Eric Schneider in memory of Ruth Schneider

Aunt Sara, Uncles Shane and Allen in honor of Nate becoming a Bar Mitzvah

Sally and David Moorhead in honor of Madison becoming a Bat Mitzvah

Carol Martin in memory of Sheldon Martin

Angela and Walter Harris in memory of Harry Harris

Adele and Sandra Narva and Stephanie

Dennis in memory of Marshall Narva

Sharyn and Stuart Horwitz in memory of

Laura Horwitz and Meyer "Monty" Saperstein  
Tina and Andy Bridge in memory of Samuel Levy and David Kahle

Bernice and William Samuels in memory of Lorraine Ruth Samuels

Janice Caro and Richard Silver in memory of Gabriella Silver

Lois and Roger Rothman in memory of Daniel M. Rothman

Judy and Mitchell Glassman in memory of Helen Hipsh

Dottie Shermet and Glaiston Chen in memory of Josephine Burman

Jeanne and David Kahn in memory of Bennett

Sukonick

Karen and David Steinfeld in memory of Harriet Landesberg

Joan and Brian Ochs in memory of Evelyn Ochs  
Holly and Ron Lobel in memory of Aaron Sher  
Janet and Mark Wallace in memory of Jackson H. Honeycutt

Barbara and Barry Fayne in memory of Esther Horner

### **RABBIS' DISCRETIONARY FUND – RABBI JACK LUXEMBURG**

In appreciation of:

RABBI LUXEMBURG on facilitating the sale and return of our chometz by  
Pat and Brad Harvey

RABBI LUXEMBURG for officiating at the naming of our granddaughter, Audrey Belle Dulberg, by Nancy and Bob Reiner  
RABBI LUXEMBURG for his leadership and friendship on our trip to Morocco by  
Elyse and Allan Weiner

### **RABBI'S DISCRETIONARY FUND – RABBI GARY POKRAS**

In memory of:

MAURICE ROSIN and YALE SILVERMAN by  
Jackie and Michael Manis

In honor of:

RABBI POKRAS for preparing Izzy and Sammy for their B'not Mitzvah and leading such a lovely and meaningful service by Eric and Vanessa Saphir

With thanks to Rabbi Pokras and the entire Beth Ami community on the naming of LEAH BARON by the Baron Family

### **RABBI'S DISCRETIONARY FUND – RABBI BAHT WEISS**

In honor of:

RABBI WEISS officiating at the service for our son Noah's Bar Mitzvah by  
Reed and Joanna Sexter

RABBI WEISS for officiating at our wedding by  
Michelle Trone and Thomas Clinch

In memory of:

MAURICE ROSIN and YALE SILVERMAN by  
Jackie and Michael Manis

### **SUSTAINING (GENERAL) ENDOWMENT FUND**

In honor of:

The marriage of LAURA HELLER, daughter of  
Connie Heller, and BRANDON KEY by Marge  
and Bob Winick

In memory of:

GAIL SHEININ, wife of Erik Sheinin and mother of  
Todd Sheinin, by Erik Sheinin  
ESTHER PODOLSKY, sister of Anita Berns, by  
Anita Berns  
GAIL SHEININ, mother of Todd Sheinin, by  
Elaine and Casey Brady  
JULES KLUGER, father of Jeri Berman, by  
Michael Wolly

### **TBA CARES FUND**

In honor of

The marriage of LAURA HELLER, daughter of  
Connie Heller, and BRANDON KEYS by Joan  
and Brian Ochs

Birth of CHARLES RANDALL KOHR, grandson  
of Susan and Ed Dosik, by Joan and Brian Ochs

### **TBANS (EARLY CHILDHOOD) SCHOLARSHIP FUND IN MEMORY OF JOEL BLUE**

In honor of:

STEPHANIE FLEISCHER on becoming a Bat  
Mitzvah by the Temple Beth Ami Nursery

School Staff

DENISE SILVER on her Special Birthday by the  
Temple Beth Ami Nursery School Staff

PAULA SAYAG, ELLEN BORTZ and JILL FINCI  
by the Temple Beth Ami Nursery School Staff  
KAREN ASMAN, MARSHA DIAMOND and  
DANIELLE KONIGSBERG on their retirements  
by the Temple Beth Ami Nursery School Staff  
LUCY POLSKY, daughter of Adam and Meredith  
Polsky, by the Temple Beth Ami Nursery School  
Staff

### **TIKKUN OLAM (COMMUNITY SERVICE) FUND**

Donation by Steven Hofberg

In honor of:

MAX BRODSKY, grandson of Arnold and Gail  
Brodsky, on becoming a Bar Mitzvah by Jon  
and Barbara Ranhand

In memory of:

GAIL SHEININ, mother of Todd Sheinin, by  
Stuart and Stephanie Golub  
YALE SILVERMAN, brother of Jackie Manis, by  
Catherine Copp  
JULES KLUGER, father of Jeri Berman, by Larry  
and Phoebe Joseph, Buzz and Lynn Karpay

### **TORAH FUND FOR ADULT EDUCATION**

In honor of:

BARRY TAYLOR for his contributions over the  
past 20 years to the establishment of the  
revised International System of Units (modern  
metric system) by his wife, Sheila Taylor

### **WISH LIST FUND**

In honor of:

JOSHANA ERENBERG by Brad and Pat Harvey,  
Connie Heller, Ira and Nancy Shapiro, Jody  
Rosenblum, Janice Rosenblatt and Ed Williams,

## ONGOING Information

Ron and Holly Lobel, Donald and Marcia Kaplan, Scott and Jacqueline Kauff, Harriet Reiter, Paul and Judi Goozh, David and Suzanne Fialkoff, Brian and Joan Ochs, Barry and Sheila Taylor, Buzz and Lynn Karpay, Jordan and Alissa Miller, Mark and Phyllis Silverman, Lee Schwab and Sue Kassell, Joanne Diamond, Donald and Marilyn Goldman, Ellen Davis and Myra Kaplan, Neil and Linda Burka, Floyd and Judy Eschler, Michael Wolly, Melvin and Joanne Brodsky, Mitchell and Rhonda Gaynor, Jim and Sherri Lieberman, Catherine Copp, Cathy Friedman, Gail and Arnold Brodsky, Elizabeth Joseloff

\*\* AS OF MAY 24, 2019

### SHARE WITH US...

We want to know. Please let us know of any significant life cycle event in your family (or the family of a member friend or neighbor), such as a birth, engagement, wedding, illness or death so we can be in touch. Please contact Gail Brodsky, Clergy Assistant, at 301-340-6818 or [gsb@bethami.org](mailto:gsb@bethami.org)

### WHEN YOU NEED HELP AFTER HOURS.

The 24/7 emergency number is available for Temple emergencies. After regular business hours, please call 301-332-3566 or you can call the office (301-340-6818) and follow the prompts to the emergency number. The clergy and the executive director are always available to help you.

### Beth Ami's Hospitality Initiative Wants YOU!

If you've been to Erev Shabbat services, you've been welcomed by fellow congregants and donned a name tag so others can greet you by name. You've also noticed a Welcome Table, the hub of our Hospitality Initiative. These efforts are a way to make all who enter our doors feel the warmth and caring of our congregational community, whether they are members or visitors who are worshiping with us for the first time.

Our "Welcome Ambassadors" also have benefitted from volunteering for this effort. They have gotten to know more and more Temple members, as well as visitors and families of B'nai Mitzvah who have come to celebrate. In helping others feel more connected to TBA they, too, have come to feel like an important part of Temple life.

While we have a cadre of dedicated volunteers who make Erev Shabbat services THE place to be on Friday evenings, we are looking for additional Temple members who would like to serve as "Welcome Ambassadors".

Please RSVP to Cathy Friedman at 301-330-8377 or [cathyfriedman@gmail.com](mailto:cathyfriedman@gmail.com) if you are interested in becoming a "Welcome Ambassador". You will be joining a great group of Temple members who are making a difference.

### BOOKING A HOTEL?

If you are Booking the Hilton Garden Inn or Homewood Suites on Shady Grove Road for your guests, tell them you are members of TBA and the Temple will receive a rebate.

### Can't Get to Services?

Be with us through video streaming. Go the home page of our website and click on view video streaming in the Service Schedule box. You can also listen to services by calling 301-309-3834.

### Looking to Make a Connection?

The clergy and staff are here to help you find that special connection with your congregation. Whether it's a class, service, kehillah, social action project, film, dinner, leadership role – just check out the Chadashot, the UTTM Thursday e-blast, the website and come join us. If you want help connecting, contact Shelly Gordon at 301-340-6818 or [slg@bethami.org](mailto:slg@bethami.org) It's YOUR congregation; be connected.



### **GREAT NEWS!!! YOU CAN SHOP AT AMAZON AND SUPPORT TEMPLE BETH AMI AT THE SAME TIME!**

Do you shop on the Amazon.com website? Do you know that if you enter the Amazon website from a link on the Temple Beth Ami website, TBA will earn at least 4% of your purchase price for every purchase you make? It is very easy and you will be helping TBA. You can access the Amazon site to earn money for TBA in one of two ways: Either go to the TBA website and click on the small Amazon.com link at the top of the home page, or use this URL which takes you directly to Amazon: <http://tinyurl.com/bethamishop>. BUT REMEMBER, TBA ONLY EARNS MONEY IF YOU GO TO AMAZON THROUGH THE TBA WEBSITE OR THIS URL!

Just imagine, you can "shop 'til you drop" without leaving home and put some badly needed cash in TBA coffers. GO TO IT!

### **JSSA Liaison is Here for You**

Through our special relationship with JSSA, TBA members are able to receive free and confidential consultation on family and mental health issues including parenting children of all ages and aging parents. Roberta Drucker is a Licensed Clinical Social Worker and also earned a BA in Psychology, and Early Childhood, Elementary and Special Education. Her specialized training and experience include the treatment of anxiety, OCD, and other mood issues, ADHD, learning disabilities, families with special needs, parenting, couples and family therapy, aging and bereavement, and intergenerational family therapy. During her tenure as Director of JSSA's Resettlement Program, she provided services to families, and consultation to staff in a variety of settings, including Jewish Day Schools, public schools, pre-schools, and religious schools. Please contact Roberta at [rdrucker@jssa.org](mailto:rdrucker@jssa.org) or 301-610-8369 for free confidential consultation.

### **CELEBRATING? Remember MAZON**

Our Congregation is a MAZON congregation which means that we contribute 3% of every event in which food is served to MAZON: A Jewish Response to Hunger (also \$3 of every Oneg contribution). We ask every member of the congregation to do the same.

**BAR/BAT MITZVAH...**contributing to Mazon brings food and help to the hungry, while it gives your child the opportunity to begin his/her Jewish adult life with a public act of Tzedakah.

**WEDDING...**traditionally it is the obligation of the bride and groom to feed the hungry and help the poor. By contributing 3% of the cost of your wedding celebration to MAZON, you can continue these Jewish traditions.

### **Is Your Email Address Current? Are You on Chaverweb? Are You Connected?**

If you are not yet connected to the Chaverweb system, it may be because we do not have an up-to-date email address. Please let the Temple office know if you did not get the emailed invitation and we will help you connect. Chaverweb will enable you to update your personal profile, view the on line membership directory, review your account (and, soon, pay your account), register for school, and classes, etc.

If you are already in Chaverweb, but FORGOT YOUR PASSWORD, please DO NOT SIGN IN AS A GUEST; simply click on "forgot your password" and you will receive a new one by email.

## Concerned about your teen's depression?

### NIH TEEN DEPRESSION STUDY:

Enrolling ages 11-17 to find causes and treatments.  
Initial evaluation, then several outpatient visits/year.  
If eligible, treatment (inpatient or outpatient).

**CALL 1-301-496-8381**  
**[TTY: 1-866-411-1010]**

**or** email [depressedkids@mail.nih.gov](mailto:depressedkids@mail.nih.gov),  
**or** [www.nimh.nih.gov/TeenDepressionStudy](http://www.nimh.nih.gov/TeenDepressionStudy)



Study # 18-M-0037.

LET US PLACE  
YOUR AD HERE.



**Don't Suffer with Foot or  
Ankle Pain!**  
**Podiatrists • Foot & Ankle Surgeons**



Yenisey Yanes, DPM  
Coralia Terol, DPM  
Isaac Neequaye, DPM



Best Podiatric Practice



Best Orthopedic Surgery  
Practice

Brenna Steinberg, DPM  
Nikki Ho, DPM  
Sradha Lamichane, DPM

**(301) 668-9707 • [www.mynewfeet.com](http://www.mynewfeet.com)**

**Offices in Frederick and Urbana**



This Space  
is Available

**MM**eyers  
eighan Wealth Management  
Specializing in 401Ks & Retirement Planning



**Charlie Meyers**  
President

240-290-6000 | C: 240-393-2353  
F: 301-761-4632  
Charlie@MeyersMeighan.com  
2440 Research Blvd. | Suite 110  
Rockville, MD 20850

Securities services offered through H. Beck, Inc. | Meyers Meighan Wealth Management Group  
Member FINRA, SIPC - Rockville, MD | is not affiliated with H. Beck, Inc.

ADVERTISE **YOUR BUSINESS** HERE

*Your Community is Looking!*

Call LPi for advertising info  
(800) 477-4574



UPGRADE TO A

**VIBRANT**  
Contact us for details *ad*

**800-477-4574**

**Do you know . . .**

**. . . that this publication is produced at no cost to your organization?** The cost of assembling, printing and delivery is carried by the advertisers which appear on these pages. By paying for advertising space, these businesses help your organization communicate with its members. When you patronize these businesses, it proves that advertising in your publication is a good investment which brings a return. Please mention that you saw the company's ad in this publication—solid evidence which encourages advertisers to continue their support!





## HELP PROTECT YOUR FAMILY

With a home security system monitored by ADT professionals 24 hours a day, 7 days a week. As an added benefit, installing a Security System may qualify you for a Homeowners Insurance discount.

**CALL NOW! 1-888-862-6429**



**SILCO**  
E L E C T R I C

**301.466.1128**

**www.silcoelectric.com**

adam@silcoelectric.com

Serving DC, MD, and VA

*"Your last impression is my first priority"*

THIS SPACE IS  
**AVAILABLE**

**AVAILABLE**

**FOR A LIMITED TIME**

ADVERTISE YOUR  
**BUSINESS  
HERE**

Contact **Jeff Kahn** to place an ad today!  
jkahn@4LPi.com or (800) 477-4574 x6411

# justorganizeit!

- Organizing/Decluttering
- Downsizing/Packing
- QuickBooks/Quicken
- Filing Systems
- Bill Paying/Online Bill Paying
- Medical Reimbursements
- Customer Service Advocacy

**Amy Weinberg**

**301-503-3345**

**amy@justorganizeitnow.com**

**www.justorganizeitnow.com**



## Fishman Financial Services

**"Taking the Stress Out of Planning for Your Retirement"**

- Comprehensive Financial Planning
- Intergenerational Planning
- Tax Planning
- Tax Preparation

**301-330-9455**

**Free No-Obligation Consultation**

**Lois@fishmanfinancial.com**

**Please visit: www.fishmanfinancial.com**

Securities offered through H. Beck, Inc.,  
a Registered Broker Dealer

Member FINRA/SIPC  
Bethesda, Maryland, 20817

Investment Advisory and Tax Preparation Services  
are available through Fishman Financial Services

Lois Fishman, CFP® is a Registered  
Representative with H. Beck, Inc.  
which is not affiliated with  
Fishman Financial Services



**Lois Fishman, CFP®**  
Certified Financial Planner

*Love and Remembrance, Natural Beauty,  
A Tradition of Caring.*



## JUDEAN MEMORIAL GARDENS

*Traditional Jewish Burial in the Heart  
of Montgomery County, Maryland*

16225 Batchellors Forest Road, Olney, MD 20832

301-384-1000 • www.judeangardens.com

"Ark" - one of 6 original art works created for Judean by Philip Ratner  
at the turn of the millennium

**Total Wine  
& MORE**

**A PROUD SUPPORTER OF  
TEMPLE BETH AMI**

**Total Wine & More.**  
The selection is incredible.

Total Wine & More is like no other wine store you have ever visited.  
Each of our superstores carries over 8,000 wines, 3,000 spirits\* and 2,500  
beers. That's a quarter of a million bottles in every store.

Visit one of our nearby stores:

### 2 Maryland Wine Superstores

LAUREL - CORRIDOR MARKETPLACE\*  
TOWSON - BELTWAY\*

\*Spirits available only in our MD locations.

### 8 Northern Virginia Wine Superstores

MCLEAN | ALEXANDRIA | SPRINGFIELD  
FAIRFAX | CHANTILLY | STERLING  
MANASSAS | FREDERICKSBURG

**Over 105 stores in 16 states!**



Get Social With Us  
TotalWine.com

# SPREAD THE WORD:

**A Thriving, Vibrant  
Community Matters**



**Support Our  
Advertisers!**



## **WE'RE HIRING AD SALES EXECUTIVES**

- Full Time Position with Benefits
- Sales Experience Preferred • Paid Training
- Overnight Travel Required • Expense Reimbursement



CONTACT US AT

**careers@4LPi.com • www.4LPi.com/careers**

CENTRAL MARYLAND  
EYE ASSOCIATES



Rockville  
301-610-2020  
Frederick  
301-662-4545



### **Board Certified Ophthalmologists**

Dr. Holly M. Gross • Dr. Thu Pham  
Dr. Raha Fahimi • Dr. Padmaja Nootheti

Comprehensive Eye Care • Cataract Surgery  
Laser & Refractive Surgery • Glaucoma  
Diabetes • Dry Eyes

**www.CentralMarylandEye.com**







# Have you found your place in the world?

**BEST**  
WASHINGTONIAN  
**2018**



**Margie Halem**  
**Realtor® MD / DC / VA**

M: 301.775.4196

O: 301.298.1001

margie@compass.com

margiehalemgroup.com

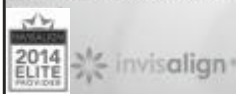
COMPASS

Compass is a licensed real estate brokerage that abides by Equal Housing Opportunity laws. Information is compiled from sources deemed reliable but is not guaranteed. All measurements and square footages are approximate. This is not intended to solicit property already listed. Compass is licensed as Compass Real Estate in DC and as Compass in Virginia and Maryland. 5471 Wisconsin Avenue, Suite 300, Chevy Chase, MD 20815 | 301.298.1001



**Capitol Orthodontics**

As a Board Certified orthodontist, Dr. Andrew L. Schwartz utilizes the latest technology including self-ligating and ceramic braces, as well as Invisalign® to straighten his patient's teeth. Dr. Schwartz has been designated an Invisalign Premier Elite Provider by Invisalign®, an honor given only to the top 1% of Invisalign® providers.



**Rockville Office**  
14955 Shady Grove Road #200  
Rockville, MD 20850  
(301) 610-9909

**Washington, DC Office**  
1800 K Street, NW #1100  
Washington, DC 20006  
(202) 785-4746

[WWW.CAPITOLORTHODONTICS.COM](http://WWW.CAPITOLORTHODONTICS.COM)



*Dr. Andrew L. Schwartz  
is your orthodontic specialist,  
offering Invisalign and braces for  
children, teens, and adults.*

**Monuments & Memorials**  
*Division of Sagel Bloomfield*

**\$100**

GIVE YOUR FAMILY THE  
GIFT OF PEACE OF MIND  
towards a pre-paid arrangement or  
memorial. Bring into your appointment.

Sagel Bloomfield is owned and operated  
by Al Bloomfield & Ed Sagel



*Ask us about  
special funeral  
plans available for  
Temple Beth Ami  
members only.*

**SAGEL  
BLOOMFIELD  
DANZANSKY GOLDBERG  
FUNERAL CARE INC**

VISIT OUR NEWLY REMODELED OFFICE –  
1091 ROCKVILLE PIKE, ROCKVILLE, MD 20852  
OR ONLINE [WWW.SAGELBLOOMFIELD.COM](http://WWW.SAGELBLOOMFIELD.COM)



*AL AND HIS FAMILY  
ARE PROUD MEMBERS  
OF TEMPLE BETH AMI*

FOLLOW US ON FACEBOOK [SAGELBLOOMFIELD.FUNERALS](https://www.facebook.com/SAGELBLOOMFIELD.FUNERALS)

**301.340.1400**

M  
O  
N  
U  
M  
E  
N  
T  
S

M  
E  
M  
O  
R  
I  
A  
L  
S



**RETURN SERVICE REQUESTED**

JULY/AUGUST 2019 SIVAN/TAMMUZ/AV 5779

## Chadashot

### TEMPLE STAFF

SENIOR RABBI	GARY POKRAS
RABBI	BAHT YAMEEM WEISS
CANTOR	LARRY ESCHLER
CANTORIAL SOLOIST	BEN PAGLIARO
DIRECTOR OF EDUCATION	KIM ROBERTS
EARLY CHILDHOOD DIRECTOR	PAULA SAYAG
EXECUTIVE DIRECTOR	JANICE ROSENBLATT
PROGRAM DIRECTOR	SHELLY LENKIN GORDON
RABBI EMERITUS	JACK LUXEMBURG
CANTOR EMERITAS	SUE ROEMER z"l
TEMPLE ADMINISTRATOR/EDITOR	DIANE FERRARO
TEMPLE ADMINISTRATIVE ASSISTANT	IRENE PAPAMANOLIS
ACCOUNTING	JOANNE DIAMOND
ACCOUNTING	ESTHER ABELSON
CLERGY ASSISTANT	SUSAN NEUMANN
CLERGY ASSISTANT	GAIL BRODSKY
TBA HIGH SUPERVISOR, GRADES 8 -12	LORI FEIN
L'MALA SUPERVISOR, GRADES 3 - 7	LISA GOODMAN
L'MALA SUPERVISOR K - 2	LORI FEIN
L'MATA SUPERVISOR GRADES 3 -6/KAYITZ	ELAINE PRIGAL
REL. SCH. OFFICE MANAGER/REGISTRAR	BOBBIE CHAIT
NURSERY SCHOOL ADMINISTRATIVE ASST.	JILL FINCI
NURSERY SCHOOL SPECIAL PROJECTS COORDINATOR	ELLEN BORTZ

### BOARD OF DIRECTORS

PRESIDENT	BUZZ KARPAY
1ST VICE PRESIDENT	DAN ROSENSTEIN
2ND VICE PRESIDENT	LAUREN BOGART
3RD VICE PRESIDENT	JOAN OCHS
TREASURER	KAL MIGLER
ASSISTANT TREASURER	MADELINE D'ALESSIO
LEAD FINANCIAL SECRETARY	BURT FELDMAN
ASSISTANT FINANCIAL SECRETARY	ANDRA ABRAMSON
RECORDING SECRETARY	TAMMY ROBERTS
GENERAL COUNSEL	
IMMEDIATE PAST PRESIDENT	LAURA ROSE
PAST PRESIDENT	TOM TEMIN
WOMEN OF TBA REPRESENTATIVE	JUDI GOOZH
BROTHERHOOD PRESIDENT	STEVE ROBERTS
MEMBERS-AT-LARGE:	
MATT BARON, AARON CHUSID, STACY DERRICK, ETAN HARMELECH,	
MICHAEL MANIS, JENNIFER WINICK MILLER, ROBERT OSHINSKY, JODI	
SCHWARTZ, RON WEINSTEIN, MICHAEL ZBARSKY, NANCY SHAPIRO	
- EXOFFICIO	



### PICNIC SHABBAT

**FRIDAY, JULY 5**

**Picnic begins at 6:45 pm;**  
**Services with The**  
**ShabbaTones Temple band**  
**begin at 7:30 pm**

**It's so easy! Just bring a dinner to enjoy**  
**(or pre-order pizza online by 7/3), your**  
**lawn chair or beach blanket, and find a**  
**spot out back in the Rova (backyard).**

**We will celebrate our wonderful volunteers.**  
**There will be a short business meeting**  
**to vote for the FY20 Board of Directors.**



**SCHOOL SUPPLY COLLECTION**  
**for students at South Lake E.S.**

**Please bring new and gently used backpacks,**  
**marble composition books, pencils and pencil**  
**pouches, scissors, rulers and glue sticks to ensure**  
**that all students can begin the school year prepared.**

Temple Beth Ami is a caring, inclusive congregational community united by Torah, guided by the philosophy of reform Judaism and committed to the Jewish people. We provide the foundation and resources to our congregants to engage in life-long Jewish learning, the pursuit of spiritual growth and the promotion of social justice for all.