

SCHEDULE OF SERVICES

Friday, February 1

6:30 pm Erev Shabbat of Song & Story

Dalet and Hey Students Participating

7:30 pm TBA High Erev Shabbat Service

Saturday, February 2

10:30 am Shabbat Service

Bar Mitzvah: Cooper Charkatz

Sunday, February 3

10:45 am Sunday Minyan

Friday, February 8

5:00 pm 9th Grade Retreat Service

6:30 pm Tot Shabbat - Bet

7:30 pm Erev Shabbat Service

Saturday, February 9

8:00 am 9th Grade Retreat Service

10:30 am Shabbat Service

Bar Mitzvah: Brady Cohen

10:30 am Shabbat Chapel Service

Sunday, February 10

10:45 am Sunday Minyan

Friday, February 15

6:30 pm Spirit of Shabbat

Saturday, February 16

10:00 am Shabbat Minyan

Sunday, February 17

10:45 am Shabbat Minyan

Friday, February 22

6:30 pm Primary Shabbat

7:30 pm Erev Shabbat Service -

Jewish Disabilities Awareness

Saturday, February 23

10:30 am Shabbat Service

Bat Mitzvah: Ashley Hays

5:30 pm Shabbat Service

Bat Mitzvah: Julie Grossman

CONTINUED ON PAGE 18

MESSAGE FROM
Rabbi Weiss

...we are committed to create an embracing and accessible community



Inclusion has always been an important value at Temple Beth Ami. I am always proud to see the diversity of our congregation, where people with both physical or mental disabilities are warmly welcomed in our congregation. Few people flinch when someone calls out during a service or appears a bit different. Students know that they can learn in a safe and comfortable environment in both our Religious School and Nursery School. Our Temple even has an Inclusion Committee that works to make sure we are meeting the needs of the congregation - new members and old.

February is Jewish Disability and Inclusion month. The word disability is such a stigmatized word. The word suggests that these individuals are unable to function in society. Yet, there is so much that these unique individuals can do in a different way—and it helps us to approach things from a new perspective. In the Bible we are told: “Atem Nitzvaim—You all stand here today—all of you, before Adonai, your God---your tribal leaders, your elders, and your officials, all the men of Israel, your children, your wives, even the stranger within your camp, from the woodchopper to water drawer—to enter into this covenant of Adonai your God.” (Deut. 29:9-11). The Torah teaches us the importance of inclusivity—that each person is to be valued.

At Beth Ami there are many ways we strive to be an inclusive community, and I thought you

CONTINUED ON PAGE 19

Come In and Warm Up

It's still cold outside. Park and come in to the library; enjoy a hot drink, wi-fi and a wonderful collection of books, CD's and DVD's to browse. Make yourself at home at your Temple.

TABLE OF CONTENTS

| | |
|----------------------------|----------------|
| President's Message | 2 |
| Coming this Month | 3 - 4 |
| Tikkun Olam List | 4 |
| Inclusion | 5 |
| Brotherhood | 6 |
| Women of TBA | 7 |
| TBANS | 8 |
| B'nai Mitzvah | 9 |
| Simchas | 9 |
| Coming in March | 9 |
| Machane/Kayitz | 10 - 11 |
| Annual Appeal | 12 - 13 |
| Photo Review | 14 - 15 |
| Committees | 16 - 18 |
| Memorium | 18 |
| Sunshine | 19 - 21 |
| Advertising | 22 - 27 |

Chadashot

Published monthly by
 TEMPLE BETH AMI
 MEMBER
 UNION FOR REFORM JUDAISM
 14330 TRAVILAH ROAD
 ROCKVILLE, MARYLAND 20850-3527

TEMPLE OFFICE 301.340.6818
 FAX 301.738.0094

www.bethami.org

HOURS:
 MON-THURS 9:00 AM - 6:00 PM
 FRI 9:00 AM - 3:00 PM
 SAT CLOSED
 SUN CLOSED

RELIGIOUS SCHOOL 301.340.8335
 FAX 301.610.6239
 NURSERY SCHOOL 301.762.5594
 FAX 301.610.5827
 BROADCAST SYSTEM 301.309.3834
 LIVE STREAMING WWW.BETHAMI.ORG

MESSAGE FROM *Buzz Karpay, President*



When I am coming to Temple for services or for Torah study, I wear a kippah. As a result, I end up driving while wearing my kippah. The remarkable thing about this is that I find that when I'm wearing a kippah, I drive differently. I'm fully aware of the differences, and I attribute it entirely to the fact that I'm wearing a kippah. The kippah has no magic power, but just wearing it makes me more conscious of the way I drive. The difference is that I drive even more courteously than I usually do. When I get to the Temple parking lot – whether or not I'm wearing a kippah – I get the same feeling.

This month, I am asking you to be more aware and courteous in our parking lot.

We have been talking a great deal recently about safety and security, and most of the discussion has been focused on our building. But safety and security in the parking lot is at least as important, and it's something that each of us has a great deal of control over. You or your children are far more likely to be injured in the parking lot than in the building. As I stated in the letter that was mailed to the congregation a few weeks ago, "Safety is a community effort." No matter how

much attention and effort we devote to securing our building, we still rely heavily on each individual to keep the parking lot safe. Most parking lot accidents are caused by distraction or inattention. Even if you're driving only 5 MPH, checking your phone for a text or email can result in dire consequences. You have heard all the cautions about distracted driving and I am not going to repeat them here. But I want to remind you that it is even more important to be fully attentive when you are in a parking lot, especially when there are children around.

In addition to being more careful while driving in our lot, I am also asking that you park only in designated parking places. Any time you park along the driveway or on the sidewalk – even for "just a minute" – it causes drivers behind you to have to go around you, increasing the risk of injury to others.

While we will continue to do all that we can to make our building as safe as we possibly can, let's all work together to make sure that our parking lot is also as safe as it can be. Each time you come into our lot, put on a virtual kippah.

SHARE WITH US...

We want to know. Please let us know of any significant life cycle event in your family (or the family of a member friend or neighbor), such as a birth, engagement, wedding, illness or death so we can be in touch. Please contact Gail Brodsky, Clergy Assistant, at 301-340-6818 or gsb@bethami.org

COMING

This Month**Friday, February 1****Network & Nosh: Digital Marketing Mini Series****8 - 9:30 am**

Are you in business for yourself? A budding entrepreneur or a seasoned business owner? Join us for a light breakfast and the opportunity to make valuable personal and professional connections at the Temple at our monthly get-together on the 1st Friday morning of the month. Topic: SEO, Social Media Marketing, Pay Per Click (PPC) & More. Guest Facilitator: Ed Samuels, Chief Technology Officer, Auxilium Technology. RSVP to SLG@bethami.org. Questions?

Contact Marcy Waxman (marcywaxmanrealty@gmail.com) or Ellen Davis (edavis@lifehealthhome.com). Supported by the Innovation Fund.

**Sunday, February 3****Brunch with Reid Cherner****9 - 10:30 am**

All are invited for a lecture with Reid Cherner, former USA Today Sports writer and author of new book Justice for Some (available for purchase and signing). Register online by 2/1. Sponsored by the Temple Brotherhood.

**Tuesdays, February 12, 19, 26 Live & Learn with Rabbi Baht Weiss****10:30 am – 12 pm**

Topic: Tehillim: Understanding Psalms. Join Rabbi Weiss for a study of the sacred poetry of the Psalms using Rabbi Richard Levy's Songs Ascending: A New Translation. The class will focus on the meaning behind the psalms and an explanation of where psalms appear in Jewish ritual life. Live & Learn is free and open to all who wish to explore a variety of topics during the daytime. This program is supported by the Sally Kera Live & Learn Fund and the Torah Fund for Adult Education.

**Friday, February 22****Potluck Shabbat Dinner****6:30 pm**

Everyone's invited for a community Potluck Shabbat dinner at 6:30 pm, followed by 7:30 pm Erev Shabbat services, featuring guest speaker, Aaron Kaufman (see below). At the dinner, the Temple provides chicken, challan and drinks; you register online to provide a side dish (your choice of salad, vegetable, starch or fruit). Free for Temple members; \$10 pp for guests. Register online by no later than 2/26, as we cannot accommodate walk-ins.

**Friday, February 22****Jewish Disabilities Awareness & Inclusion Shabbat****7:30 pm**

Temple Beth Ami's Inclusion Committee invites you for an evening of inspiration and education on Jewish Disabilities Awareness and Inclusion Shabbat, featuring guest speaker, Aaron Kaufman. Aaron joined the DC office of the Jewish Federations of North America (JFNA) in early 2016 as a Senior Legislative Associate, focusing on disability and poverty issues. Having CP, Aaron brings a unique perspective to JFNA's efforts on behalf of all people with disabilities. Please join us and welcome Aaron and his parents!

COMING *This Month*



Monday, February 25

Broadway Buzz with Steve Friedman

10:30 am– 12 pm

Topic: Musical Revivals and their Impact. Don't miss this popular Monday morning lecture, featuring footage, facts and, always, some live performance. Free for Temple members; \$10 for guests.

TIKKUN OLAM *Community Service Projects*



LEND A HAND

Temple Beth Ami Community Service Projects

Thank you in advance for your support!
(For information on additional TBA community service projects, visit

bethami.org/groups/TO.)

VOLUNTEERS NEEDED

- **Shabbat Services for Seniors** - Join fellow TBA members in leading/facilitating Shabbat services for seniors at Bedford Court in Silver Spring. Current volunteers will help you learn more about the Shabbat service, in Hebrew or English. Contact Colin Alter at alterc@comcast.net.

- **Help Needed for English as a Second Language Program** - Community Ministries of Rockville's (CMR) Language Outreach Program needs teaching assistants, homework helpers for school children, and childcare volunteers for children under age 5 Tuesday/Thursday nights &/or Saturday mornings. SSL hours available. For more information on this & other volunteer opportunities, contact Andrea Kempner-Wink at andreakwink@cmrocks.org.

COLLECTIONS

THANK YOU FOR SUPPORTING THESE DRIVES!

- **Stuff-a-Duff Snacks Drive** - We are collecting snacks for children coming into Montgomery County Child Welfare Services offices while waiting to be placed into emergency foster care. Please bring boxes of individually wrapped snacks such as goldfish crackers, animal crackers, or teddy grahams to the box in the Temple lobby during February. (No granola bars, and nothing with nuts, please.
- **Ongoing Food Drive** - Please bring cans (preferably 12 oz. or larger) of tuna, chicken, or salmon (no Spam, please) and fruits in 100% juice (not in syrup, please) to the box in the Temple lobby. The collection benefits families served by the Manna Food Center and Nourish Now.
- **Box Tops for Education (BTE) Labels** - Help needy area schools turn these little pink labels into cash for needed items and supplies. Bring your labels to the collection boxes in the Temple lobby, Religious School office & Nursery School office. Questions? Contact Bernard Silverstein at cynbern@verizon.net.

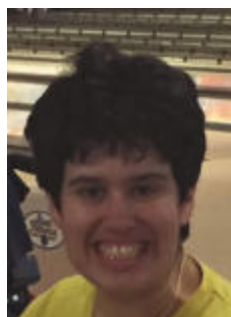
**APRIL CHADASHOT
DEADLINE FEBRUARY 25**

INCLUSION

Just because a person has a disability, does not make him/her invisible.

We are a congregation of many differently-abled people. Some disabilities are noticeable; some are not. In order to help us get to know each, we will be featuring articles about some of the people with disabilities in our congregation who want to share their, or their families', stories.

Several parents have chosen to write brief descriptions of their children to allow you to "get to know their skills and unique qualities." We hope you will say hello, spend some time getting to know them so you can appreciate them for who they are. We hope everyone will feel like a treasured member of this wonderful community



Meet Sarah Maryn

You've probably seen me around Temple Beth Ami and thought to yourself something like, "what's her problem?" or "why is she acting so strange?" Let me tell you something about myself. My name is Sarah Maryn, I'm 28 years old and I have been coming to Beth Ami with

my parents and sisters since I can remember. I have Autism Spectrum Disorder that causes me to react and behave differently than other people might in certain situations. My parents are writing this for me since I am unable to express what I feel. They know me better than anyone and are the best people for the job.

I love coming to Temple and my parents have been bringing me to services since I was very little. I've attended Hebrew School, had my Bat Mitzvah and was confirmed here. Over the years I have learned all the prayers and songs and love to sing along with Cantor Larry and Joshana. I sometimes get a bit too enthusiastic and might sing a bit too loud, but that's how I show how happy I am to be there. If you see me at services, please say hi to me. I might not answer you, but I am happy to meet new people and be with everyone.

Being Jewish has been a very important part of my life. It wouldn't be a Friday night if we didn't say the Shabbat blessings. I look forward to lighting the Chanukah candles and participating in the family Passover Seder. I love celebrating the Jewish new year on Rosh Hashanah and, believe it or not, enjoy Yom Kippur services.

When I am at home I love to watch videos and play on the computer. I participate in Special Olympics sports like skiing (my dad is the head coach of the ski team), bowling and bocce. This is another opportunity for me to do what I love best, be with my friends.

So next time you see me, say something. You never know what you will get in return!

JEWISH CAMPING BUILDS JEWISH IDENTITY

Jewish camping, whether overnight or day camp, has long been recognized as a primary influence on building Jewish identity. Help us help children have this great experience – support our Campership Fund. All the money goes to camp scholarships for families with demonstrable need.

SHABBAT MORNING MINYAN

On Shabbat mornings when there is not a service scheduled in the sanctuary, a short (10 – 20 minute) minyan service, including the recitation of kaddish, will be conducted by the clergy in the Yarden social hall immediately following Torah study at approximately 10 am. If Torah study is still going on when you arrive, please feel free to come and listen.

Check out our new mobile friendly website.
www.bethami.org

BROTHERHOOD

News

Monthly greetings, TBA Brothers and members. I want to thank all who attended Don Markus' presentation at the December Brunch. We enjoyed a lively question and answer session moderated by Brotherhood member, Rob Shapiro, where Don shared his expert opinion on the University of Maryland's football program and the disfunction surrounding Maryland's athletic department. Many stones were turned over concerning the University's athletic programs since the tragic death of one of their student football players.

The camaraderie in the room was great, and we had a good number of attendees. We hope that more people could enjoy these events with us, so PLEASE make it a priority to attend these events. I personally like to consider guest speaker sessions as our Brotherhood meetings – there's only a handful scheduled per year so it's a great reason for us to get together; plus they are well catered! Please reserve your spot in advance using Chaverweb ([https://www.chaverweb.net/Congregant/](https://www.chaverweb.net/Congregant/SignUp.aspx?sid=7603)

[SignUp.aspx?sid=7603](https://www.chaverweb.net/Congregant/SignUp.aspx?sid=7603)) so we can accurately plan for catering. Please feel free to contact Matt Rosenstock or me with any suggestions for future speakers.

And speaking of Matt Rosenstock -- drum roll, please -- he was officially voted in as the next TBA Brotherhood Treasurer! I would like to thank Rob Shapiro for his three years of outstanding service and contributions as the Brotherhood Treasurer in leaving the Brotherhood's finances on strong footing. I am excited that both Rob Shapiro and Ira Greenspan intend to remain very active with the Brotherhood during transition and moving forward. I know that for Ira, who has been Brotherhood President for the past several years, the transition is bittersweet because he has enjoyed his experience interacting with the members and guest speakers. I am proud that Ira feels confident in the future leadership of the Brotherhood.

Our next "meeting" is scheduled for Sunday February 3, from 9 - 10:30 am, and the guest speaker will be sports writer

and author REID CHERNER. Below is some information on Reid:

<https://bethami.org/event/brotherhood-brunch-with-author-reid-cherner/>

<https://www.goodreads.com/book/show/34466695-justice-for-some>

I hope to see all who are able to attend. During our next meeting, we will dedicate a small amount of time to getting reacquainted and discussing ideas such as:

- Social events (impromptu and planned)
- Community services and outreach
- Charity

And for anyone interested in joining the TBA Brotherhood, please join using Chaverweb (<https://www.chaverweb.net/Congregant/SignUp.aspx?sid=7603>) or contact me directly steve_roberts@yahoo.com.

See you in February!
Steve Roberts



WOMEN OF TEMPLE BETH AMI

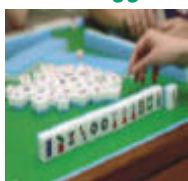
News



Book Club

The WTBA Book Club will meet on Tuesday, February 5 from 7:30 – 9 pm at the Temple. The book for this month is a memoir, *The Book of Separation* by Tova Mirvis. Please contact Terry Steinberg at 301-926-0815 or steinberg_4@comcast.net with any questions. Looking forward to seeing you there!

Mah Jongg Tournament



Please join WTBA's semi-annual Mah Jongg Tournament at the Temple on Sunday, February 17th from 10 am to 4 pm. The day will be filled with food, cash prizes, door prizes, and friendly competition. You must be able to play one round (4 games) in 55 minutes or less to compete. Please see the flyers in the lobby of the Temple or check Beth Ami's website for more information and to register. Contact Rachel Maryn at rmarn@verizon.net with any questions.

Summer Camp Scholarships

For the summer of 2019, WTBA is offering a limited number of scholarships for children to attend summer camp programs at either TBA or a URJ-affiliated camp. Please note that these are the only camps for which the scholarships are available. Information about URJ camps can be found at <http://urjyouth.org/camps>. These scholarships are named in memory of Harriet Sturm, past-president of WTBA and life-long champion of the youth programs of Reform Judaism. Because of budget

constraints, please only request this scholarship if your child would not be able to attend the camp without this financial assistance. Deadline for applications is March 1st. Contact Jeanne Kahn for more information.



Manna Food Center

Thank you to the following volunteers who helped sort food for Manna in November: Josh Siegel, Tyler Siegel, Danielle Konigsberg, Jake Konigsberg, Parker Liebowitz, Ruth Shevach, Mark Silverman, Lynn Stander, Dave Stander, Nancy Yarvin, Rebecca Reiser, Jacob Reiser, and Susan Mina. A special thank you goes out to Rhonda Gaynor for coordinating this family-friendly Tikkun Olam activity. Please contact Rhonda at Rhonda.gaynor@gmail.com if you are interested in future volunteer opportunities with Manna.

Pre-School Hanukkah Party

The annual Pre-School Hanukkah party held on Sunday, December 2nd was a huge success! All the children had fun doing crafts, listening to a story, and singing songs. Thank you to Judy Fox-Tepper and Joan Ochs for helping with all the activities and a big thank you to Amy Scher for organizing the party.

Save the Date

Purim Café – Wednesday, March 20

Women's Seder – Sunday, April 14

WRJ Social Justice Conference – May 18 - 19 in Washington D.C.

Ongoing Projects



Kippot for B'nai Mitzvah, Brides and Grooms are available at discount prices through WTBA. View styles at www.kippah.com, then

contact Michelle Freedberg at mefreedberg@gmail.com to place your order.

WTBA will present **TBA newlyweds** as a wedding gift the beautiful book *On the Doorposts of Your House: Prayers and Ceremonies for the Jewish Home*. Please email Barbara Ranhand at Barbara.ranhand@verizon.net if you have information about any Temple families who are planning a wedding.

Drop-in Mah Jongg sessions are held at the Temple every Monday afternoon when the Temple is open from 1 – 3 pm. We play for fun and not money, so you can leave your quarters at home. Please contact Rachel Maryn at rmarn@verizon.net with any questions and to be added to the email list.

WTBA E-mail Address

Send us an email at womenoftemplebethami@gmail.com with any questions or comments. We look forward to hearing from you!

Elizabeth Joseloff

WTBA Chadashot article editor
ejoseloff@gmail.com

NURSERY SCHOOL NEWS

*Paula Sayag,
Director*



There's No Place Like TBANS: Long-time Teachers Share What Makes TBANS Special

Last month, current teachers shared what TBANS was like 30 years ago. Now, more teachers share what continues to make TBANS feel like home - and their hopes for the next 30 years.

Karin Swissman: I love the warmth of the staff, teachers, parents and children. I love feeling appreciated. I love being the child's first teacher! I love knowing or hoping that I made a difference in a child's life. The children make me smile every day and I only wish I could remember all the amazing things that they say and do. I know this school will continue to be the best nursery school out there because of the commitment from the director to keep educating the staff and changing with the times, the fabulous teachers, and the participation of the parents.

Susan Bloom: I love Beth Ami and am so proud to be a part of this school - the school is totally dedicated to the children: their education, happiness, positive adjustments, meaningful experiences, and having a comfortable feeling coming to our school. The staff is such a warm and caring group of

educators. I hope that in our future we will continue to be as child-oriented.

Karen Asman: What I love best about TBANS is that feeling that I get EVERY day that I walk in those doors! It's a joyous place filled with wonderful families. I get to work with my friends and we all share the gift of loving to teach and learn in a place where we are proud to be.

Ellen Bortz: The uniqueness of TBANS is that as teachers, we really have grown up together. Twenty of the 30 staff members are former parents!! We've experienced the school from the parent perspective and respect it so much, that we have chosen (and been lucky enough to have been hired) to work here. We are truly a family. We agree that TBANS is our happy place, surrounded by precious children who we love, and they extend that love right back at us. We started hiring teachers who had been alumni parents way back 29 years ago. We hope to continue that tradition as we have welcomed Jax Stief, Jen King, Naomi Rubinstein, and Stacy Rubinstein to our staff in our most recent years.

Ellen Keifetz: The best part of TBANS is the knowledgeable, loving, and caring staff. I must say that all of the new

people that have joined our staff over the past few years continue to have those same qualities that uphold the TBANS reputation.

Marsha Diamond: My hope for TBANS in the next 30 years is for it to continue to flourish!

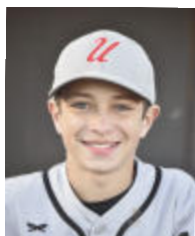
Loretta Blue: We are a close-knit community and the Parent Committee works hard to keep it that way. They are welcoming to new families and many have formed strong and lasting friendships. I am looking forward to celebrating the thirty-year anniversary of our school. My wish is that we continue to have families that understand the importance of a Jewish education even in the early years. This Gala is also important to me because a portion of money raised will go to the Joel Blue Scholarship Fund. This was created right after my husband passed away and we have helped over 55 families and have given over \$60,000.

See you March 2nd at the 30th Anniversary Gala to celebrate 30 years of a school that feels more like a home.

Compiled by **Jodie Fishman**,
TBANS Correspondent

B'NAI MITZVAH*Profiles*

Please join with us at Shabbat Services during the month of February as we celebrate with...

**COOPER ISAAC CHARKATZ,**

son of Ross and Heather, will become a Bar Mitzvah on Saturday, February 2. He is a seventh grade student at Ridgeview Middle School. Cooper has a younger brother, Mason, and a younger sister, Sloane.

**BRADY MASON COHEN,**

son of Amy and Michael, will become a Bar Mitzvah on Saturday, February 9. He is a seventh grade student at Herbert Hoover Middle School. Brady has a younger sister, Jordan. For his Bar Mitzvah Project, Brady wanted to help animals in need and has run

several fundraisers throughout the community, raising money and collecting items for the Montgomery County Humane Society



ASHLEY HAYS, daughter of Daniel and Cheryl, will become a Bat Mitzvah on Saturday, February 23. She is in the seventh grade at the Bullis School. Ashley has an older brother, Robbie, and a younger brother, Ryan.

**JULIE BRYNN GROSSMAN,**

daughter of Laura and Rick, will become a Bat Mitzvah on Saturday afternoon February 23. She is a seventh grade student at Julius West Middle School. Julie has a younger sister, Alyson, and a younger brother, Brandon. For her Bat Mitzvah project, Julie is collecting

donations for Crumbs & Whiskers, which rescues homeless cats and places them for adoption, and the Montgomery County Animal Shelter, which rescues animals in need of loving homes.

SIMCHAS*Mazel Tov to...*

Adam Levine, Dylan Levine, Ari Andelman, and Evan Geisner each on becoming a Bar Mitzvah

Hannah Zuck, Dylan Barron, and Madeline King each on becoming a Bat Mitzvah

Danielle, Fabio and Rocco Capano on the birth of their daughter and sister, **Marissa Iole Capano**

Erica, Aaron, Shane and Colton Adler on the birth of their son and brother, **Silas Ezra Adler**

Susan and Harry Stern on the birth of their granddaughter, **Violet Mae Shortley**

Judy and Mitchell Glassman on the birth of their grandson, **Ethan Henry Glassman**

Sheila and Barry Taylor on the 60th Wedding Anniversary



**Come Celebrate the Joyous Holiday of
PURIM at Beth Ami
Wednesday, March 20th**

Food, Shushan Arcade, Megillah Reading, Magic Show and
"The Sound of Shushan" Purim Shpiel!
Details to Follow!

SNOW AND ICE CLOSINGS

Weather related information will be posted on the Temple website's home page (www.bethami.org) and will be on the Temple and school's voice mail. The schools follow MCPS; the Temple follows MC Government.

Check out our new mobile friendly website.
www.bethami.org

RELIGIOUS SCHOOL NEWS

*Kim Roberts,
Director*



Calendar

Friday, February 1

TBA High Overnight Gr 8-12 7:30 pm

Sunday, February 3

Machane TBA In Session
Gr 3 - 6 Kehillah-Amazing Art Studio

Tuesday, February 5

Mid-Week Gr 3-6 in session
TBAjrHigh in session - Chug 1 Night (Confirmation, Cooking, HW Hangout, Social Action, 3D Printing)

Friday-Sunday, February 8 - 10

9th Grade Retreat

Sunday, February 10

Machane TBA In Session
TBA High Kehillah 4 - 6 pm

Tuesday, February 12

Mid-Week Gr 3 - 6 in session
TBAjrHigh in session
TBA High - Core 2 Night

Sunday, February 17/

Tuesday, February 19

NO SCHOOL

Friday, February 22

Beth Shabbat Family Experience, 6 pm
K - 2 Primary Service 6:30 pm

Sunday, February 24

NO SCHOOL-Winter Break

Tuesday, February 26

Mid-Week Gr 3-6 in session
TBAjrHigh in session
TBA High - Chug 2 Night (Aliyah Bet, HW Hangout, Sports & Jewish games, Leadership, Student Council Committees, Yoga)



IT'S KAYITZ TIME!

We are pleased to announce that Kayitz is back for the fourth summer and it will be bigger and better than ever! Kayitz is the TBA summer camp experience for children ages 3-4th grade. Taste of Kayitz offers programming for children below the Kayitz age group.

This summer our program will be divided into 3 units:

Lev (Heart) unit

The Lev unit is comprised of the Varod (pink) - Adult/Child class - and Sagol (purple) -2's bunk. The Varod class is for children under 2 and their parent(s) on Tuesdays from 9:30-11:00am. During this class, children will become familiar with the Kayitz camp setting and have the opportunity to meet Kayitz staff members. The Sagol bunk is available for 2-year-olds who have options to attend for 3, 4, or 5 days per week for 6 weeks.

Olam (World) unit

The Olam unit is comprised of Kachol (blue) - 3's bunk - and Yarok (green) - 4's bunk. For the first time, our Kachol campers get to play on Beth Ami Beach. Our Yarok campers get to participate in Hagigah- theme based art, social action and cooking projects.

Shemesh (Sun) unit

This year there will be further division within our Shemesh (Sun) unit. The Shemesh unit is comprised of the Tzahov (yellow) K-1st graders and Catom

(orange) 2nd-4th graders. Shemesh campers have an extended day which lasts until 3:30pm. As campers grow in our program, so do the level of activities, leadership opportunities and choice. Be sure to take advantage of our Shemesh promotion, which offers a third week of Kayitz for \$50.00 if you sign up for at least 2 weeks!

Every day Yarok, Tzahov and Catom campers will gather at the flagpole for kehillah ("community") time, the Pledge of Allegiance, Hatikvah and camp songs. Campers will have themed weeks, Shabbat celebration with challah-making every Friday, and "hagigah" activities which include art, cooking, and tikkun olam social action projects. We will also have daily water activities including "Beth Ami Beach" and "Lake Beth Ami."

Kayitz offers the flexibility of registering for individual weeks. During the week of July 4, you may register by the DAY. "Kayitz Plus" before and after camp is available, as is daily hot lunch.

For Summer 2019 we are thrilled to announce that **there are no price increases at Kayitz**, only an increase in AWESOME activities.

Kayitz Early Bird Registration is available until March 4th. Don't miss out on the opportunity to get the early bird discount and be sure to sign up for Kayitz 2019 today! Visit www.bethami.org to find Kayitz under the Education drop-down menu.

KAYITZ

Fun and Friendships



WE DID IT!!

Thank you for making this our most successful annual campaign ever. Because of your generosity we raised \$102,828.21 and earned the anonymous \$50,000 challenge grant for a total of \$152,828.21. The rabbis teach: “without bread there is no Torah, and without Torah there is no bread.” Thank you for sustaining Torah in our midst and helping us to bring a little more light into the world.

Nedivim (\$5000 and above)

Jim and Sherri Lieberman, Michael Wolly, Anonymous, Jeffrey and Marnie Grinspoon

Shomrim (\$2000-\$4999)

Jeanne and David Kahn, Connie Heller, Cathy Friedman, Brad and Holly Mendelson, Joan and Brian Ochs, Jeannette and Norman Sturman, Bob and Midge Bajefsky, Howard and Leslie Stein, Merle and Rita Postal

Magen (\$1000-\$1999)

Lynn and Buzz Karpay, Flora and Burt Feldman, Steven and Susan Braunstein, Lawrence Rosenblum, Seymour and Lois Fishman, Terry and Debra Korth, Stephen and Lisa Paul, Mark Klein and Deneen Wilson, Michael and Rachel Maryn, Gary and Shauna Pokras, Martin Norwitz, Richard and Shelley Miller, Melissa Bauman

Chaverim (\$500-\$999)

Denis and Joy Franks, Nancy and Ira Shapiro, Mitchell and Judith Glassman, Joseph and Janey Nadler, Larry and Lucy Cohen, Rebecca and Marc Hertzman, David and Donna Kanin, Pat and Brad Harvey, Howard and Marji Epstein, Catherine L. Copp, Robin Bergen and Janine Hackett, Robert and Lori Honigman, Larry and Lucy Cohen, Howard and Michele Koenick, Laurence, Heather, Nadia and Justin Arnold, Ruth Ann Saffitz, Suzanne Hirsch and Robert Roseman, Peter and Laura Rose, Abby and Kenneth Fagin, Alan and Bonnie Hammerschlag

Tomhim (\$250-\$499)

Kim and Sam Roberts, Lillian Caplan, Rhona and Terry Arbit, Steven and Madeline D'Alessio, Jen Miller, Carol S. Martin, Linda and Ian Kramer, Charles and Cecile Plost, Scott and Jackie Kauff, David and Karen Steinfeld, Loretta Feldman, Danny and Paula Sayag, Alan and Madeline Weinstock, Larrie and Joyce Greenberg, David and Jodi

Katzker, Dona Deutsch, Linda and Neil Burka, Robert and Marjorie Winick, Don and Christina Halpern, Sanford and Cherry Glazer, Judi and Paul Goozh, Susan and David Fox, Alissa and Jordan Miller, Todd Cohen and Baht Weiss, Jay and Beth Gelfman, Kirk and Andrea Denicoff, Ernest and Stacia Friedman-Hill, Tammy and Steve Roberts, Mark and Arlynn Joffe, Louis Solomon and Leslie Marks, Richard Silver and Janice Caro, Josh and Moira Carin, Edward Williams and Janice Rosenblatt, Lauren Bogart, Helen Salzberg, Robert Parker and Nancy Gordon, Jon and Barbara Ranhand, Warren and Lisa Marcus, Greg & Martha Rosenbaum, Howard Baum, Jennifer Winick Miller, Joseph Levitt, Gerald and Roberta Feigen, Michael Kielbiewicz and Barbara Strong, Toni and Marc Loev, Stuart Treby, Rabbi Jack Luxemburg and Barbara Etkind, Michael and Gail Kaltman

Bonim (\$100-\$249)

Elaine Gebell and Phil Sparer, Donna and Jimmy Smith, Sheila Yuter, Hilde and Colin Alter, Ellen Keifetz, Allen and Marilyn Shapiro, Dennis and Sandra Friedman, Jordann and Dan Cholst, Norman and Mitzi Estrin, Leonard and Amy Gross, Steve and Amy Wollins, Steven Sachs and Kim Dettelbach, Stuart and Susan Wohl, Kal and Ruth Migler, Janet and Mark Wallace, Carol Stein, David and Sue Fialkoff, David Sacks, Toby and Linda Lehman, Linda and Jim Burgin, David and Helen Rubin, Norman and Sylvia Greenberg, Seth and Terry Steinberg, Fred and Susan Kleiman, Susan and Ed Neumann, Walter and Angela Harris, Tom and Robin Temin, Tobi Printz-Platnick and Geoffrey Platnick, Diane Castiglione, David and Margo Rosenberg, William and Bernice Samuels, Susan and Doug Baruch, Janet Lambert, Mitch and Chutamas Lustig, Lisa and Mark Kirsch, Edythe Kramer, Marla and Steve Brannan, Michael and Phyllis Snyder, Gary and Roseanne Lieber, Kathy and Jim Goldgeier, Dale and Ellis Koch, Luanne and Marc Stanley, Deena and Ben Klopman, Adele Narva, Robert

and Marlynn Goren, Stephanie Fleischer, Michael and Jackie Manis, Ann Joseloff, Julie and Darren Sapper, Edith Karl, Mary Ann Greenburg, Gary and Barbara Winter, Michael and Joan Stern, Harvey and Charlotte Zuckman, Arnold and Gail Brodsky, Jonathan and Lizzie Westin, Mitchell and Rhonda Gaynor, Fredric and Elaine Gillespie, Ron and Lisa Weinstein, Daid and Gail Klein, Joel and Nana Falik, Stanley and Linda Berman, Edward and Susan Dosik, Jill and Woodie Kessel, Robert Goldman, Barbara Linder and Andrew Eisen, Neil and Linda Shiffman, Sondra Weiss, Michael and Ann Freiman, Linda and Art Jacobson, Jason and Leslie Katz, James and Virginia Michalowski, Eric and Susan Meyers, Helen and Norman Kamerow, Matt and Lori Rosenstock, Cheryl and Michael Herman, Jonathan Dinman and Rachel Cohen, Sandra and Jim Diamond, Josh and Loren Felsner, David Isaacs and Benita Marcus, Steven Friedman and Lorraine Tarnove, Don and Livia Weinstein, Leslie and Larry Block, Elaine Amir, Alan Eisenberg, Anita Marcus, Daniel and Julie Krakower, Ira Jay and Judith Ann Dwoskin, Mark and Pearl Vogel, Steve and Cindy Pohoryles, Joseph and Gloria Rutberg, Lois and David Prensky, Tom and Betty Loggia, Steven and Susan Plotnick, Jill and Louis Lachter, Richard and Heather Luxenberg, Thomas and Janet Schiller, Judy Fox-Teppe, Jed and Laura Tonelson, Edward and Elinor Sondik, Lois and Roger Rothman, Mark and Deborah Ezrin, Jeffrey and Jeri Berman, Women of Temple Beth Ami, Barry and Sheila Taylor, Ronald and Isadora Stehlin, Joseph Koegel and Suzanne Balamaci, Robert and Brenda Speisman, Michael and Lisa Firestone, Alan and Karen Asman, Richard Wittenberg and Lisa Simpson, Michael and Sherry Greenbaum, Gary and Evelyn Michel, Dan and Melissa Rosenstein, Steve and Tammy Truland, Jennifer and Scott Blacker, Jack and Beth Rosenthal, Rosetta Cavallo and James Weiss, Alexandra and Aaron Chusid

Double Chai (\$36-\$99)

Richard and Kim Freedman, Elizabeth Joseloff and Adam

Levy, Tammy and Adam Rosner, Ed and Lynn Goodman, Dorothy Welan, David Gottfried, Scott and Patricia Felrice, Scott and Ellen Harrison, Andrew and Carolyn Katz, Sharon and Nathan Tash, Robert and Jodi Shapiro, Judith Blickstein, Howard Philips and Marci Norton, Ira and Linda Berger, Sharon Bernstein, Alan and Valerie Schwartz, Tom and Bonnie Sneeringer, Jack and Beth Rosenthal, Cheryl and Jason Berkowitz, Michael and Amanda Zbarsky, Ed and Sharon Samuels, Eric and Christine Myers, Bruce Kramer and Joy Belin, Stanley and Ann Alster, Becky Corbett, James Salomon, Kenneth Hepfer, Joel and Phyllis Polster, Peter and Susan Cohen, Kevin and Cara Schorr, Joel and Lisa Goodman, Michael and Karen Folkart, Harriet Reiter, Stuart and Janice Cadel, Rebecca and Michael Reiser, Sandra and Edward Green, Gary Erenrich and Richel Lupkin, Melvin and Joanne Brodsky, Morris and Sybil Cantor, Mickey and Marc Goldstein, Elaine and Jerry Auerbach, Steve and Susan Lapidus, Pauline Walstein, Robert Drummer and Susan Stiles, Jason and Abigail Ford, Lewis and Linda Cohen, Edward Feinstein & Joanne Diamond, Shalisha Erenberg, Jerry and Karen Callistein, Perry Bechky and Sirina Tsai, Marilyn and Donald Goldman, Robert and Tina Ricigliano, Stuart and Stephanie Golub, Loretta Blue, Mark and Kristen Waksberg, John Wassell and Gail Kaplan-Wassell, Gerald Callistein and Karen Carp, Laura and Peter Rose, Darryl and Edythe Runett, Marilyn Bier, Sue Kassell and Lee Schwab, Nancy and Howard Harrell, Harris and Lisa Povich

Other

Wendy Simon, Melanie Polk, Sandi and Marshall Levy, Anita Berns, Arthur and Marsha Sandler, Adam and Jenn Schaeffer, Marc and Jennifer Feinstein, Jessica and Marc Rogers, Jessica and Marc Rogers, Annie and Brett Karp, Gregory and Stacey Derrick, Simon and Marcie Nadler, Jeffrey and Helene Casper, Benjamin and Gene Sossa, Arnold and Gail Brodsky, Gene and Elana Lippa

PHOTO REVIEW

WTBA Preschool Hanukkah Party, Next Dor - Comfort Cases



Shabbanukkah, Machane Spirit Day, TBANS Community Shabbat



COMMITTEE

News

WISE AGING

Four years and counting! Wow! Beth Ami's Wise Aging pilot group was supposed to meet once a month for ten sessions. However, the group felt such an incredible bond that we decided to continue. We renamed ourselves Wise Aging Sisters to exemplify our closeness.

"Wise Aging" was developed by the Institute of Jewish Spirituality in New York to enable synagogue groups to explore the time of life between middle age and old age in a positive and mindful manner. IJS developed a text book which combines the three pillars of the program: Jewish wisdom on aging; cultivating mindfulness and spiritual practice; and sharing experiences among group members.

Beth Ami sent Roberta Feigen, Roberta Drucker, and Shirley Levin to be trained by the IJS as Wise Aging leaders. Roberta Feigen continued on with the pilot group, recruiting me to help. Roberta Drucker and Shirley Levin have gone on to lead other groups — a few are currently meeting at TBA.

What makes Wise Aging so special?

"We had no idea how our lives would be changed by being in the first Wise Aging group," says Sandy Marks. "Friendships were forged with people I didn't know or people I knew from seeing them around."

Jeanette Sturman agrees, "We've come together at a time in our lives when we have so much to share and lots to learn from each other."

"We have celebrated many events together in and out of the Temple," says Ginny Michalowski. "We have learned together, cried and laughed together, sang and lit Chanukah candles together. We continue to mourn one of our members, Lois Sacks."

"I love the idea of sharing our 'success story' with our fellow congregants," adds Evelyn Michel.

When she signed up for Wise Aging training, Roberta Feigen says that she could not have imagined how meaningful the



group be. "It is one of my most heartwarming and joyous accomplishments," she says. "I look forward to every class and I have learned so much by researching what the Torah, Talmud and writers have to say about our topics. It adds to our spirituality."

To which we say "Amen."

Leslie Milk



"In the blowing of the wind and in the chill of winter, we remember them."

Excerpt — Roland B. Gittelsohn

No one has to do it alone.



Garden of Remembrance
GAN ZIKARON MEMORIAL PARK

**17 YEARS OF CARING SERVICE AND DEDICATED SUPPORT TO
THE JEWISH COMMUNITY OF GREATER WASHINGTON**

Call Janice Rosenblatt at Temple Beth Ami, (301) 340-6818,
or visit www.gardenofremembrance.org

Partner Agency of
The Jewish Federation
OF GREATER WASHINGTON



TIKKUN OLAM IN ACTION

THANK YOU for Supporting TBA's Collection Efforts!

Over the years, TBA members have graciously donated thousands of items needed by local residents and clients of the many community agencies, organizations, and schools that Temple Beth Ami, through our Tikkun Olam (TO) Committee, tries to help. These items often would be difficult for the adults, children, and families who receive them to afford on their own.

In 2018, as a congregation, we*—

- filled 204 backpacks (3 carloads) with assorted school supplies;



- donated 2 carloads of diapers of all sizes;
- filled 7 giant trash bags with more than 160 unwrapped toys and games;
- collected 2 full cartons of nonperishable foods for Nourish Now's Thanksgiving food drive;



- collected 2 carloads of winter coats and socks for children, women, and men;
- supplied several shopping bags filled with personal care items and over-the-counter medicines for local refugee families; and
- at Yom Kippur, donated ~4,000 pounds of food to the Manna Food Center.

*And this is only a partial listing of the congregation's collections!

The TO Committee has developed a close working relationship with many of the organizations that we assist annually, including Interfaith Works, South Lake Elementary School, Nourish Now, Community Ministries of Rockville (CMR), Montgomery County Child Welfare Services, Manna Food Center, and the Mansfield Kaseman Health Clinic. In 2019, we will also collect items for the Stepping Stones Shelter, I Support the Girls, and the Montgomery County Family Justice Center. Arlynn Joffe, chair of these collection efforts for the TO Committee, often says she feels "like Santa Claus or the Good Fairy" when she delivers the collected items to the recipients, who greatly appreciate TBA's efforts on their behalf.

The TO Committee is grateful for the kindness and generosity of our congregation and extends a big THANK YOU to all who help us to help others. It truly does take a village—our TBA Village—to do what we do for so many in our community.

For questions or comments about our collections, contact Arlynn Joffe at arlynnjoffe@gmail.com.

COMMITTEE

News

HOLIDAY ADOPT-A-FAMILY

Thank you to our congregants who participated in “adopting” a foster family from The Montgomery County Child Welfare program. This year, we helped a high school senior who has been in foster care since she was 12; her father is unknown. We gave to a child whose mother died and her father struggles with substance abuse and homelessness. We helped four kids whose mother died and the kids are all in different placements. There was a single mom with two kids, a 12-year-old who has significant disabilities, and a family who has fled violence in their country.

A warm thank you to Ellen Bortz for involving her culture club and the ECC staff, the Temple staff and clergy, organized by Shelly and Janice, as well as the following individuals: Joanne Brodsky and her friend, Steven Chen, Susan Fox, Mickey Goldstein, Connie Heller, Fran and Harry Hertz, Elizabeth Joseloff and Adam, Gail Kaplan-Wassell, Leslie Katz, Tina and Jerry Levine, Lisa Marcus, Jackie Meltzer, Shana Rosenblatt, Emil Mendelavich, Leslie Milk, Tobi Printz-Platnick, Valerie Schwartz, Dottie Shemet, Vanessa Sophir, Jackie Steiger, Barbara Strong, Amy Weinberg and Livia Weinstein.

Robin Temin and Judi Goozh

SERVICES CONTINUED FROM PAGE 1

Sunday, February 24

10:45 am Sunday Minyan

Friday, March 1

6:30 pm Erev Shabbat Song & Story

Saturday, March 2

10:30 am Shabbat Service

Bar Mitzvah: Jonah Goldberg

Sunday, March 3

10:45 am Sunday Minyan

*“May the memory of these
Righteous
be for a blessing”*

We mourn the recent death of:

Arthur Willcher
father of Leslie Shapiro
Paul Kramer Miller
father of Barbara Miller
Saul William Dansky
cousin of Beth Rosenthal
Steven Wilson
cousin of Sheila Walcoff
Faye Bradus
grandmother of Michelle Monti
Herbert Heller
father of Howard Heller
Miriam Segal
mother of Jane Himelstein and
grandmother of Michael Himelstein
Sandy Luftig
mother-in-law of Melissa Bauman and
grandmother of Josh Bernstein
Arlene Friedman
grandmother of Rachel Ochner
Robert Adler
father of Sanford Adler
Herbert Bonn
father of Denise Bonn
Melvin Cohen
uncle of Michael Maryn
Zelda Bowen
sister-in-law of Jules Bowen
Ernie Potechin
father of Sue Potechin Kamins
Elaine Chaplain
aunt of Joel Polster
Elaine Hochheiser
grandmother of Allison Brenner
Dr. Nona Chern
grandmother of Matthew Portnoy

RABBI CONTINUED FROM PAGE 1

should know about some of the efforts being made.

- The grounds have a paved path and handicap parking access
- There is an elevator in the building to the second floor
- There are quiet rooms available during Temple activities
- Live streaming of services
- Railing and ramp to the bima, large print siddur and hearing devices
- A welcoming committee to greet guests and members
- Food allergy policy for the Temple- We made our Temple a Nut Free zone and there are always gluten free and dairy free options available at our services and event
- Mental Health awareness programs including our new Bitachon group
- An inclusion section of our Temple Website

And in our schools:

- Sensory friendly services with “pray by pray” booklets
- TBANS/Machane food allergy policy
- TBANS employs part time OT, SLP, Developmental Support Coordinator and Social Thinking specialist to provide professional training, mentoring and ongoing consultation for teachers and parents of children with diverse needs.
- Atzma'im (independent) program for students with diverse needs in grades 3-6
- Customized B'nai Mitzvah services for kids with special needs.
- “Break Boxes” on inclusion bins for students who need extra support to focus (stress balls, noise cancelling headphones, bumpy seats)
- Teacher training session on inclusive practices
- Inclusion specialist on staff

At Beth Ami, we are committed to create an embracing and accessible community. We never want a person's disabilities to get in the way of our ability to see that person's special gifts and talents.

Please mark your calendars for Friday, February 22nd when we welcome a special speaker, Aaron Kaufman of the Jewish Federation of North America's D.C office. Having Cerebral Palsy, Aaron feels he brings a unique perspective to JFNA's effort on behalf of people with disabilities. Outside of advocacy, he was the instructor in Project SEARCH Montgomery, a job-training program for young adults with significant disabilities. Please don't miss the opportunity to hear from Aaron.

This month, I want to acknowledge the hard work and impressive efforts of our Inclusion Committee and assure you that Beth Ami is a place we can be proud of. But we know that we can always do better. If there are any ways in which we can better meet your needs or the needs of those you care about in our community, please let us know. We would be glad to have a conversation. We want Beth Ami to be a place where all feel included and welcome.

WE GRATEFULLY *Acknowledge*

A contribution to a Temple fund is a meaningful way to support the Temple community while honoring a birthday, recuperation, wedding, graduation, birth or any special occasion. Donations may also be made in memory of a loved one. For a minimum \$10 donation, an acknowledgement will be sent to the person you wish to honor or the family of the deceased. If you have any questions about existing funds or wish to establish a fund, please call Janice Rosenblatt, Executive Director, at 301.340.6818.

ACCESS AND SPECIAL NEEDS FUND

Donation by Matthew and Wendy Morris

ANNUAL APPEAL (HIGH HOLY DAYS) FUND

In honor of:

SEYMOUR JOEL SHEINKOPF on celebrating his 100th Birthday by

Mark and Olivia Sheinkopf

JACKIE and MIKE MANIS on hosting the TBA Empty Nester Hanukkah

Party by Steven and Madeline D'Alessio

In memory of:

DAVID MARYN, father of Michael Maryn, by Mark and Olivia Sheinkopf

My father, ERNIE POTECHIN, by Sue Potechin and Mark Kamins

My parents, HELEN and DANIEL BASS, by Gail Roe

ANTI-ADDICTION FUND IN MEMORY OF SCOTT STERNBERG

In honor of:

ELLEN STERNBERG on her Birthday by Karen and Alan Asman

In memory of:

PENNY ROSS, mother of Jackie Meltzer, by Jill and Andy Klein

CANTOR'S DISCRETIONARY FUND

In honor of:

CANTOR ESCHLER for his participation and preparation for TOBY

and ANDREW SIMON'S WEDDING by Debra and Mark Shepard
CANTOR ESCHLER for preparing and officiating at the B'nai Mitzvah of ADAM AND DYLAN LEVINE by proud grandparents, Tina and Jerry Levine
CANTOR ESCHLER for doing the unveiling of MARTIN FINE by Dori and Ronald Stehlin
CANTOR ESCHLER for preparing SKYLER WALCOFF for his Bar Mitzvah by Sheila and Jeffrey Walcoff
CANTOR ESCHLER by Angela and Walter Harris

In memory of:
ARLENE GOLUB, mother of Jonathan Golub, by Pat and Brad Harvey

CRITICAL ISSUES FUND

In memory of:
SAUL WILLIAM DANSKY, cousin of Beth Rosenthal, by Charles and Cecile Plost

HINENI FUND

Donation by Angela and Walter Harris

HOLOCAUST EDUCATION FUND IN MEMORY OF OSCAR POHORYLES

In memory of:
HARRY FISCHER, my father, on his Yahrzeit by Diane Castiglione

INNOVATION FUND

Donation by Connie Heller

ISRAEL MATTERS

In honor of:
SHEILA and BARRY TAYLOR in celebration of their 60th Anniversary by Beth and Jack Rosenthal

ISRAEL TRAVEL FUND IN MEMORY OF DAVID CARIN

Donation by Terrie and Jeff Manchester

JNF GROVE FUND

In memory of:
SAUL WILLIAM DANSKY by Beth and Jack Rosenthal

MACHANE TBA (RELIGIOUS EDUCATION) SCHOLARSHIP FUND IN MEMORY OF BUD LEVIN

In memory of:
ROBERT COPP, beloved father of Catherine Copp, by Shirley Levin and Julius Bowen

MACHANE TBA (RELIGIOUS EDUCATION) FUND

In memory of:
CAROLE MACRINA, mother of Cara O'Connor, grandmother of Daniel and Betsy O'Connor, by Cara and Shaun O'Connor and family

MACHANE TBA (RELIGIOUS EDUCATION) RESOURCE/TUTORIAL FUND

In appreciation of:
RABBI GARY POKRAS, RABBI BAHT WEISS, CANTOR LARRY ESCHLER and LISA GOODMAN on preparing our son, Skylar Walcoff, to become a Bar Mitzvah by Jeffrey and Sheila Walcoff

NURSERY SCHOOL SCHOLARSHIP FUND IN MEMORY OF JOEL BLUE

In honor of:
MADELINE KING, daughter of Jennifer and Jeffrey King, on becoming a Bat Mitzvah by The Temple Beth Ami Nursery School Staff
PAULA SAYAG, ELLEN BORTZ and JILL FINCI, Happy Hanukkah, by The Temple Beth Ami Nursery School Staff

Wishing MICHAEL FIRESTONE a Speedy Recovery by Elsa Weinstein

In memory of:
JOEL BLUE on the 20th anniversary of Joel's passing by Blair and Danny Goldstein
ARLENE FRIEDMAN, grandmother of Rachel O'ner, by Beth Jolles and family, Loretta Blue, Amy and Stuart Turow, Sheryl and Jed Woelfle
GEORGE ORLOVE, husband of Arlene Orlove and uncle of Ben Klopman, by Loretta Blue
GEORGE ORLOVE, uncle of Ben and Deena Klopman, by Michelle and Warren Beinart

ONEG FUND

Sarah and Chuck Levine in honor of Adam and Dylan becoming B'nai Mitzvah
Karina and Brian Zuck in honor of Hannah becoming a Bat Mitzvah
Jennifer King and Jeffrey King in honor of Madeline becoming a Bat Mitzvah
Nicole and Jeffrey Andelman in honor of Ari becoming a Bar Mitzvah
Sheila and Barry Taylor in honor of their 60th Wedding Anniversary
Jay Josephs in memory of Naomi Josephs
Charlotte and Harvey Zuckman in memory of Elizabeth Zuckman
Angela and Walter Harris in memory of Augusta Harris
Debbie and Terry Korth and family in memory of Yetta Korth
Shelley and Richard Miller in memory of Raymond Miller and Blanche Miller
Barbara Greenebaum in memory of Hennie Greenebaum
Sharon and Ed Samuels in memory of Jane Kahn
Loretta Feldman in memory of Jerome Markowitz
Sirina Tsai, Perry, Aviva and Elias Bechky in memory of Abigail Bendis
Janet and Mark Wallace in memory of Emma Grace Honeycutt
Emily and Irving Kesser in memory of Rae Kesser
Adele and Sandra Narva and Stephanie Narva
Dennis in memory of Gilbert Potts
Georgea Sacher in memory of Mary Cohen, Gail Robbins Sacher and Saul Sacher
Janice Rosenblatt and Ed Williams, Shana, Josh and Sara Rosenblatt
n memory of Joel Rosenblatt
Jeanne and David Kahn in memory of Rose Sukonick
Madeline and Steven D'Alessio in memory of Paul Krupenie
Lisa Hanover and Mark Kirsch in memory of Nettie Cailingold Hanover
Susan and Ed Dosik in memory of Larry Needle
Gail and Mike Kaltman in memory of Miriam Wolkoff
Lisa and Joel Goodman in memory of Burton Shaffer

Jody and Gary Sklar in memory of Dr. Morton Fielding
 Deborah Henken and Bryan Fantie in memory of Dr. E. Marvin Henken
 Helen and Norman Kamerow in memory of Sarah Rosenthal
 Glenna and Donald Frost in memory of Lucille Frost and Leonard Frost
 Janet and Jay Liebowitz in memory of Dr. Harold J. Zeide
 Barry Slevin and family in memory of Lynne Slevin
 Jodi and Robert Shapiro in memory of Charles Chernikoff
 Helen Salzberg in memory of Lena Ginsberg
 Christina and Don Halpern in memory of Frank Halpern
 Roberta and Gerald Feigen in memory of Mildred Goldstein and Philip Feigen
 Barbara Strong and Michael Kielbiewicz in memory of Susan Dawson
 Leslie Marks, Louis Solomon and Family in memory of Noah Jonathan Marks
 Rhonda and Mitchell Gaynor in memory of Leonard Gaynor
 Inna and Mikhail Etin in memory of Esfira Altman
 The Gorenstein Family in memory of Norma and Harry Newman and the Shalita Family
 Joyce and Larrie Greenberg in memory of Lillian Webne Greenberg
 Phoebe and Larry Joseph in memory of Rose Potash Brown, Matilda Joseph Cohen and Clarence Coleman Joseph
 Terry and Seth Steinberg in memory of Steven Steinberg
 Leslie and Larry Williamowsky in memory of Meriam Williamowsky
 Roberta and Eric Schneider in memory of S. Joseph Schnieder
 Phyllis and Mark Silverman in memory of Stanley J. Silverman
 Gail and Mike Kaltman in memory of Joseph Sacks and Herman Kaltman
 Joanne and Mel Brodsky in memory of Julius D. Berg
 Dori and Ronald Stehlin in memory of Dorothy Bloch
 Ellen Davis and Myra Kaplan in memory of Simone Kaplan-Davis and Ari Kaplan-Davis
 Amy and Leonard Gross in memory of

Jonathan R. Steinberg

RABBIS' DISCRETIONARY FUND (RABBI LUXEMBURG)

In honor of:

RABBI LUXEMBURG's participation in Andrew's Bar Mitzvah and his support to our family over the many years by Marc and Jennifer Feinstein
 The naming of LILAH CAROLE ROSENWACH by Eric and Susan Meyers
 RABBI LUXEMBURG, in gratitude for leading the shiva minyan and bringing comfort on the occasion of my father's death, by Catherine Copp

In memory of:

ROBERT COPP, beloved father of Catherine Copp, by Rosanne and Gary Lieber

RABBIS' DISCRETIONARY FUND (RABBI POKRAS)

In honor of:

DARREN SHAPIRO becoming a Bar Mitzvah by Rob and Jodi Shapiro
 RABBI POKRAS' guidance by Donna Deutsch
 RABBI POKRAS' support and leading a beautiful service for Andrew's Bar Mitzvah by Marc and Jennifer Feinstein
 RABBI POKRAS for graciously officiating at the B'nai Mitzvah of Adam and Dylan Levine by proud grandparents, Tina and Jerry Levine

RABBIS' DISCRETIONARY FUND (RABBI WEISS)

In honor of:

RABBI WEISS preparing Adam and Dylan Levine for their B'nai Mitzvah by proud grandparents, Tina and Jerry Levine
 RABBI WEISS by Jeffrey and Sheila Walcoff
 RABBI WEISS by Ed and Ellie Sondik

SUSTAINING (GENERAL) ENDOWMENT FUND

Donation by Steven and Madeline D'Alessio

TBA CARES FUND

Donation by James and Allyson Kahler

TIKKUN OLAM (COMMUNITY SERVICE) FUND

In honor of:

ADAM and DYLAN LEVINE, grandsons of Jerry and Tina Levine, on becoming B'nai Mitzvah by Harry and Fran Hertz
 RON and HOLLY LOBEL by Adam and Rachel Otsuka
 SARA BARTON, granddaughter of Sherri and Jim Lieberman, on becoming a Bat Mitzvah, by Gail and Charlie Gorenstein, Beth and Jack Rosenthal
 SHEILA and BARRY TAYLOR in celebration of their 60th Anniversary by Anita Berns

In memory of:

ROBERT COPP, father of Catherine Copp, by Suzy Hirsch and Bob Roseman, Lloyd and Patricia Kaufman, David and Monya Cohen, Stephen and Lisa Paul
 HERBERT BONN, father of Denise Bonn, by David and Monya Cohen
 ROBERT ADLER, father of Sanford Adler, by David and Monya Cohen
 IDA NEWMAN, mother of Larry Newman, by Gail and Charlie Gorenstein
 RUTH DOSIK, mother of Lois Rothman, RHODA ROTHMAN, mother of Roger Rothman, and RACHEL RUDNICK, grandmother of Roger Rothman, by Roger and Lois Rothman

TORAH FUND FOR ADULT EDUCATION

In memory of:

ROBERT COPP, father of Catherine Copp, by Terry and Debra Korth, Rich Edelman and Robin Shipper

Yahrzeit Fund

In memory of:

ROBERT FOLKART by Karen and Michael Folkart

Youth Fund

Donation by Monya Cohen

** as of 12/21/2018

Concerned about your teen's depression?

NIH TEEN DEPRESSION STUDY:

Enrolling ages 11-17 to find causes and treatments.
Initial evaluation, then several outpatient visits/year.
If eligible, treatment (inpatient or outpatient).

CALL 1-301-496-8381
[TTY: 1-866-411-1010]

or email depressedkids@mail.nih.gov,
or www.nimh.nih.gov/TeenDepressionStudy



Study # 18-M-0037.

FAMILY & COSMETIC DENTISTRY

Our office is committed to providing personalized, quality care in a relaxed and friendly atmosphere.



We welcome new patients to our practice.

Andrew J. Sorkin, D.M.D., L.L.C.

Mark A. Wallace, D.D.S.

301-309-0707

1901 Research Blvd., Suite 200
Rockville, MD 20850

Please visit us on the web at www.wallacesorkin.com



**Don't Suffer with Foot or
Ankle Pain!**

Podiatrists • Foot & Ankle Surgeons



Yenisey Yanes, DPM
Coralia Terol, DPM
Isaac Neequaye, DPM



Best Podiatric Practice



Best Orthopedic Surgery
Practice

Brenna Steinberg, DPM
Nikki Ho, DPM
Sradha Lamichhane, DPM

(301) 668-9707 • www.mynewfeet.com

Offices in Frederick and Urbana



Capitol Orthodontics

As a Board Certified orthodontist, Dr. Andrew L. Schwartz utilizes the latest technology including self-ligating and ceramic braces, as well as Invisalign® to straighten his patient's teeth. Dr. Schwartz has been designated an Invisalign Premier Elite Provider by Invisalign®, an honor given only to the top 1% of Invisalign® providers.



invisalign®



Rockville Office
14955 Shady Grove Road #200
Rockville, MD 20850
(301) 610-9909

Washington, DC Office
1800 K Street, NW #1100
Washington, DC 20006
(202) 785-4746

WWW.CAPITOLORTHODONTICS.COM



Dr. Andrew L. Schwartz
is your orthodontic specialist,
offering Invisalign and braces for
children, teens, and adults.

MMeyers eighan Wealth Management

Specializing in 401Ks & Retirement Planning



Charlie Meyers
President

240-290-6000 | C: 240-393-2353
F: 301-761-4632
Charlie@MeyersMeighan.com
2440 Research Blvd. | Suite 110
Rockville, MD 20850

Securities services offered through H. Beck, Inc. | Meyers Meighan Wealth Management Group
Member FINRA, SIPC - Rockville, MD | is not affiliated with H. Beck, Inc.

ADVERTISE YOUR BUSINESS HERE

Your Community is Looking!

Call LPi for advertising info
(800) 477-4574



UPGRADE TO A

VIBRANT
Contact us for details *ad*

800-477-4574

Do you know . . .

. . . that this publication is produced at no cost to your organization? The cost of assembling, printing and delivery is carried by the advertisers which appear on these pages. By paying for advertising space, these businesses help your organization communicate with its members. When you patronize these businesses, it proves that advertising in your publication is a good investment which brings a return. Please mention that you saw the company's ad in this publication—solid evidence which encourages advertisers to continue their support!



Montages and Custom Logos!



15% back to TBA

Leslie Katz
301-873-7123
lesliekatz1@msn.com
KatzandDogDesign.com

Web Design
Newsletters
Business Cards
Brochures



SILCO
E L E C T R I C

301.466.1128

www.silcoelectric.com

adam@silcoelectric.com

Serving DC, MD, and VA

"Your last impression is my first priority"

THIS SPACE IS
AVAILABLE

AVAILABLE

FOR A LIMITED TIME

ADVERTISE YOUR
**BUSINESS
HERE**

Contact **Jeff Kahn** to place an ad today!
jkahn@4LPi.com or (800) 477-4574 x6411

justorganizeit!

- Decluttering & Downsizing
- Personal Financial Management & Advocacy
- Small Business Accounting & Strategic Planning

Amy Weinberg
301-503-3345
 zatsky@msn.com



Fishman Financial Services

"Taking the Stress Out of Planning for Your Retirement"

- Comprehensive Financial Planning
- Intergenerational Planning
 - Tax Planning
 - Tax Preparation

301-330-9455

Free No-Obligation Consultation

Lois@fishmanfinancial.com

Please visit: www.fishmanfinancial.com

Securities offered through H. Beck, Inc.,
 a Registered Broker Dealer

Member FINRA/SIPC
 Bethesda, Maryland, 20817

Investment Advisory and Tax Preparation Services
 are available through Fishman Financial Services

Lois Fishman, CFP® is a Registered
 Representative with H. Beck, Inc.
 which is not affiliated with
 Fishman Financial Services



Lois Fishman, CFP®
 Certified Financial Planner

*Love and Remembrance, Natural Beauty,
 A Tradition of Caring.*



JUDEAN MEMORIAL GARDENS

*Traditional Jewish Burial in the Heart
 of Montgomery County, Maryland*

16225 Batchellors Forest Road, Olney, MD 20832
 301-384-1000 • www.judeangardens.com

"Ark" - one of 6 original art works created for Judean by Philip Ratner
 at the turn of the millennium

Total Wine & More

**A PROUD SUPPORTER OF
 TEMPLE BETH AMI**

Total Wine & More.
 The selection is incredible.

Total Wine & More is like no other wine store you have ever visited.
 Each of our superstores carries over 8,000 wines, 3,000 spirits* and 2,500
 beers. That's a quarter of a million bottles in every store.

Visit one of our nearby stores:

2 Maryland Wine Superstores

LAUREL - CORRIDOR MARKETPLACE*
 TOWSON - BELTWAY*

*Spirits available only in our MD locations.

8 Northern Virginia Wine Superstores

MCLEAN | ALEXANDRIA | SPRINGFIELD
 FAIRFAX | CHANTILLY | STERLING
 MANASSAS | FREDERICKSBURG

Over 105 stores in 16 states!



Get Social With Us
TotalWine.com

Your Local Assisted Living



Bartholomew House
6904 River Road
Bethesda, MD 20817
(301) 320-6151



Raphael House
1515 Dunster Road
Rockville, MD 20854
(301) 217-9116



Byron House
9210 Kentsdale Dr
Potomac, MD 20854
(301) 469-9400

- Assistance with bathing, grooming & dressing
- Medication administration / management
- Housekeeping & laundry service
- Nutritious meals / healthy snacks
- Recreational, social & spiritual programs



Quality Assisted Living at an Affordable Price

Victory Housing is the nonprofit housing development arm of the Archdiocese of Washington.



*Victory
Housing*

www.victoryhousing.org



WE'RE HIRING AD SALES EXECUTIVES

- Full Time Position with Benefits
- Sales Experience Preferred • Paid Training
- Overnight Travel Required • Expense Reimbursement



CONTACT US AT

careers@4LPi.com • www.4LPi.com/careers



Rockville
301-610-2020

Frederick
301-662-4545



Board Certified Ophthalmologists

Dr. Holly M. Gross • Dr. Thu Pham
Dr. Raha Fahimi • Dr. Padmaja Nootheti

Comprehensive Eye Care • Cataract Surgery
Laser & Refractive Surgery • Glaucoma
Diabetes • Dry Eyes

www.CentralMarylandEye.com



Have you found your place in the world?

BEST
WASHINGTONIAN
2018



Margie Halem
Realtor® MD / DC / VA

M: 301.775.4196

O: 301.298.1001

margie@compass.com

margiehalemgroup.com

COMPASS



Compass is a licensed real estate brokerage that abides by Equal Housing Opportunity laws. Information is compiled from sources deemed reliable but is not guaranteed. All measurements and square footages are approximate. This is not intended to solicit property already listed. Compass is licensed as Compass Real Estate in DC and as Compass in Virginia and Maryland. 5471 Wisconsin Avenue, Suite 300, Chevy Chase, MD 20815 | 301.298.1001



Capitol Orthodontics

As a Board Certified orthodontist, Dr. Andrew L. Schwartz utilizes the latest technology including self-ligating and ceramic braces, as well as Invisalign® to straighten his patient's teeth. Dr. Schwartz has been designated an Invisalign Premier Elite Provider by Invisalign®, an honor given only to the top 1% of Invisalign® providers.



invisalign®



Rockville Office
14955 Shady Grove Road #200
Rockville, MD 20850
(301) 610-9909

Washington, DC Office
1800 K Street, NW #1100
Washington, DC 20006
(202) 785-4746

WWW.CAPITOLORTHODONTICS.COM



Dr. Andrew L. Schwartz
is your orthodontic specialist,
offering Invisalign and braces for
children, teens, and adults.

Morgan Stanley



Ronnie Lapinsky Sax CPM®

Senior Portfolio Management Director
Financial Advisor

7500 Old Georgetown Rd, 10th Fl
Bethesda, MD 20814

301-657-6368

r.lapinskysax@morganstanley.com

NMLS# 1275710

© 2016 Morgan Stanley Smith Barney LLC.
Member SIPC. CRCT586709

Monuments & Memorials

Division of Sagel Bloomfield

\$100

GIVE YOUR FAMILY THE
GIFT OF PEACE OF MIND
towards a pre-paid arrangement or
memorial. Bring into your appointment.

Sagel Bloomfield is owned and operated
by Al Bloomfield & Ed Sagel



Ask us about
special funeral
plans available for
Temple Beth Ami
members only.

**SAGEL
BLOOMFIELD
DANZANSKY GOLDBERG
FUNERAL CARE INC**

VISIT OUR NEWLY REMODELED OFFICE –
1091 ROCKVILLE PIKE, ROCKVILLE, MD 20852
OR ONLINE WWW.SAGELBLOOMFIELD.COM



AL AND HIS FAMILY
ARE PROUD MEMBERS
OF TEMPLE BETH AMI



FOLLOW US ON FACEBOOK [SAGELBLOOMFIELD FUNERALS](https://www.facebook.com/SAGELBLOOMFIELDFUNERALS)

301.340.1400



Chadashot

Temple Beth Ami
14330 Travilah Road
Rockville, Maryland
20850-3527

NON PROFIT ORG.
U.S. POSTAGE
PAID
SUBURBAN MD 20898
PERMIT 761

RETURN SERVICE REQUESTED

FEBRUARY 2019 SHEVAT/ADAR ALEF 5779

TEMPLE BETH AMI Chadashot

TEMPLE STAFF

| | |
|---|----------------------|
| SENIOR RABBI | GARY POKRAS |
| RABBI | BAHT YAMEEM WEISS |
| CANTOR | LARRY ESCHLER |
| CANTORIAL SOLOIST | JOSHANA ERENBERG |
| DIRECTOR OF EDUCATION | KIM ROBERTS |
| NURSERY SCHOOL DIRECTOR | PAULA SAYAG |
| EXECUTIVE DIRECTOR | JANICE ROSENBLATT |
| PROGRAM DIRECTOR | SHELLY LENKIN GORDON |
| RABBI EMERITUS | JACK LUXEMBURG |
| CANTOR EMERITAS | SUE ROEMER z"l |
| DIRECTOR OF EDUCATION EMERITAS | PHYLLIS GREENE |
| NURSERY SCHOOL DIRECTOR EMERITAS | KAREN GREENBERG |
| TEMPLE ADMINISTRATOR/EDITOR | DIANE FERRARO |
| TEMPLE ADMINISTRATIVE ASSISTANT | IRENE PAPAMANOLIS |
| ACCOUNTING | JOANNE DIAMOND |
| ACCOUNTING | ESTHER ABELSON |
| CLERGY ASSISTANT | SUSAN NEUMANN |
| CLERGY ASSISTANT | GAIL BRODSKY |
| TBA HIGH SUPERVISOR, GRADES 8 -12 | LORI FEIN |
| L'MALA SUPERVISOR, GRADES 3 - 7 | LISA GOODMAN |
| CURRICULUM SPECIALIST K-12 | SHARON TASH |
| L'MALA SUPERVISOR K - 2 | LORI FEIN |
| L'MATA SUPERVISOR GRADES 3 -6/KAYITZ | ELAINE PRIGAL |
| REL. SCH. OFFICE MANAGER/REGISTRAR | BOBBIE CHAIT |
| NURSERY SCHOOL ADMINISTRATIVE ASST. | JILL FINCI |
| NURSERY SCHOOL SPECIAL PROJECTS COORDINATOR | ELLEN BORTZ |

BOARD OF DIRECTORS

| | |
|--|-------------------|
| PRESIDENT | BUZZ KARPAY |
| 1ST VICE PRESIDENT | ROBERT OSHINSKY |
| 2ND VICE PRESIDENT | LAUREN BOGART |
| 3RD VICE PRESIDENT | MICHAEL MARYN |
| TREASURER | KAL MIGLER |
| ASSISTANT TREASURER | MADLINE D'ALESSIO |
| FINANCIAL SECRETARY | CAROL MARTIN |
| ASSISTANT FINANCIAL SECRETARY | BURT FELDMAN |
| RECORDING SECRETARY | TAMMY ROBERTS |
| GENERAL COUNSEL | DAN ROSENSTEIN |
| IMMEDIATE PAST PRESIDENT | LAURA ROSE |
| PAST PRESIDENT | TOM TEMIN |
| WOMEN OF TBA REPRESENTATIVE | JUDI GOOZH |
| BROTHERHOOD PRESIDENT | STEVE ROBERTS |
| MEMBERS-AT-LARGE: | |
| MATT BARON, AARON CHUSID, STACY DERRICK, BETH GELFMAN, MICHAEL MANIS, JENNIFER WINICK MILLER, MATT ROSENSTOCK, NANCY SHAPIRO, RON WEINSTEIN, JONATHAN WESTIN | |



TEMPLE BETH AMI PURIM PROJECT

HAPPY PURIM

Purim Gift Boxes - Mishloach Manot

DID YOU KNOW it is a *mitzvah* to send sweet treats and offer *tzedakah* on Purim? Beth Ami will help you fulfill this mitzvah by sending Purim wishes along with a gift box full of delicious and delightful treats for your friends and family! Each recipient family will receive one Purim gift box ("*Mishloach Manot*") and a card including the names of all those who contributed to their gift. It's a great way to share the joy of the holiday with others in our community! Details on how to place your order will arrive in your email soon!

**Order your Purim Gift Boxes-
Mishloach Manot -by March 4th.
We celebrate Purim on March 20th.**

HAPPY PURIM

Temple Beth Ami is a caring, inclusive congregational community united by Torah, guided by the philosophy of reform Judaism and committed to the Jewish people. We provide the foundation and resources to our congregants to engage in life-long Jewish learning, the pursuit of spiritual growth and the promotion of social justice for all.