

# TEMPLE BETH AMI Chadashot

JULY/AUGUST 2018 TAMMUZ/AV/ELUL 5778

VOLUME 46 NUMBER 1

## SCHEDULE OF SERVICES

### Friday, July 6

6:30 pm Erev Shabbat of Song and Story

### Saturday, July 7

10:00 am Shabbat Minyan

### Sunday, July 8

10:45 am Sunday Minyan

### Friday, July 13

6:30 pm Tot Shabbat

7:30 pm Erev Shabbat Service

### Saturday, July 14

10:30 am Shabbat Service

Bat Mitzvah: Ravyn Treby

10:30 am Shabbat Chapel Service

### Sunday, July 15

10:45 am Sunday Minyan

### Friday, July 20

6:30 pm Spirit of Shabbat

### Saturday, July 21

10:00 am Shabbat Minyan

Erev Tisha B'Av - Details to follow

### Sunday, July 22

10:45 am Sunday Minyan

### Friday, July 27

7:30 pm Erev Shabbat Service

### Saturday, July 28

10:00 am Shabbat Minyan

### Sunday, July 29

10:45 am Sunday Minyan

### Friday, August 3

6:30 pm Erev Shabbat of Song and Story

### Saturday, August 4

10:00 am Shabbat Minyan

### Sunday, August 5

10:45 am Sunday Minyan

CONTINUED ON PAGE 7

## MESSAGE FROM

*Rabbi Pokras*



### How Beth Ami Senior Staff Members Think (Chapter 1: Adult B'nei Mitzvah).

Dear Beth Ami Friends,

Every week, our senior professional team (Rabbi Weiss, Cantor Eschler, Kim Roberts, Paula Sayag, Janice Rosenblatt and myself) get together to talk about, well, all things Beth Ami. We look at upcoming holidays and programs (and those that have just passed), community engagement, the Jewish values we want to bring to each event or initiative we are supporting, and generally at how we can add value to your Beth Ami experience.

Usually, before something comes to the full senior staff, we work singly or in small groups on a concept. When it's ready (being only half-baked) we bring it to the table for further discussion. The conversation often takes surprising twists and



turns before we arrive at our final decision.

For example, every few years we offer an adult b'nei mitzvah process for those who were not able to become b'nei mitzvah when they were kids.

It should be simple, right? After all, we've done this before, just offer a class, pick a date and go.

Let me share with you a little story about the Talmud, or rather, Talmudic logic. A teacher

CONTINUED ON PAGE 19

## HIGH HOLY DAY INFORMATION ONLINE

Sign onto your Chaverweb account to order your tickets!  
Details will be listed under files (top toolbar)

## TABLE OF CONTENTS

<b>President's Message</b>	<b>2</b>
<b>Coming this Summer 3 - 5/7</b>	
<b>Tikkun Olam</b>	<b>6</b>
<b>Brotherhood</b>	<b>8</b>
<b>Women of TBA</b>	<b>9</b>
<b>TBANS</b>	<b>10/11</b>
<b>B'nai Mitzvah Profiles</b>	<b>11</b>
<b>Machane TBA</b>	<b>12</b>
<b>TBA High</b>	<b>13</b>
<b>Simchas/Graduations</b>	<b>14/15</b>
<b>Photo Review</b>	<b>16/17</b>
<b>Committees</b>	<b>18</b>
<b>Sunshine</b>	<b>21 - 24</b>
<b>Ongoing Information</b>	<b>25</b>
<b>Advertising</b>	<b>26 - 31</b>

### Chadashot

Published monthly by  
 TEMPLE BETH AMI  
 MEMBER  
 UNION FOR REFORM JUDAISM  
 14330 TRAVILAH ROAD  
 ROCKVILLE, MARYLAND 20850-3527

TEMPLE OFFICE 301.340.6818  
 FAX 301.738.0094

[www.bethami.org](http://www.bethami.org)

HOURS:  
 MON-THURS 9:00 AM - 6:00 PM  
 FRI 9:00 AM - 3:00 PM  
 SAT CLOSED  
 SUN CLOSED

RELIGIOUS SCHOOL 301.340.8335  
 FAX 301.610.6239  
 NURSERY SCHOOL 301.762.5594  
 FAX 301.610.5827  
 BROADCAST SYSTEM 301.309.3834  
 LIVE STREAMING [WWW.BETHAMI.ORG](http://WWW.BETHAMI.ORG)

## MESSAGE FROM *Buzz Karpay, President*



Hi, I'm Buzz Karpay, your new Temple President. My wife, Lynn, and I are long-time members of Temple Beth Ami and, if you have been at the Temple with some frequency, there is a good chance you have seen me even if we don't know each other yet. If that's the case, I hope that the next time we see each other in the building, we both have a few minutes to say hello and introduce ourselves to each other.

Each year Temple Beth Ami has a service recognizing our graduating high school seniors. The students have a chance to share their thoughts during the service about why they stayed in our Machane (Religious School) program all the way through high school. As I have listened to these students over the past few years, I realized that there is a common thread. Almost every single graduating senior mentions the community as a significant factor in their choosing to remain in TBA High. They have built and nurtured friendships from the time they entered school. That makes me proud of Temple Beth Ami.

Our adult members are attracted to Temple Beth Ami for reasons that are similar to those of our graduating high school students. Community has been a common theme during our Vision 2020 strategic planning effort, expressed through comments we have received from hundreds of congregants over the past few months. While there have certainly been comments about other aspects of Beth Ami, it is quite clear from

the feedback that the warm, caring, inclusive community is one of the strongest bonds that our members feel. That should make us all proud of Temple Beth Ami.

When Lynn and I joined nearly 40 years ago, I didn't realize that Temple Beth Ami would be so much more than a place to pray and study. The congregation was only about 250 families then, and we both quickly became active in Temple activities and on the Board. It wasn't long before it felt like we knew nearly everyone in the congregation, and we started celebrating with our new community. We have celebrated the births of our children, b'nai mitzvah, confirmations, high school and college graduations, weddings, and now the births of our grandchildren. We have also found support from you during difficult and challenging times. We still come here to pray and study. But even praying and studying are enriched by our being surrounded by what is now our extended family – all of you.

There has never been a better time for you to become more involved – or more involved - in Beth Ami's activities. Our Vision 2020 strategic planning initiative has already involved hundreds of you through house meetings and other information-gathering forums. We currently have research teams taking the information you provided, combining that with other sources, and preparing to present the results of their research. These results will be made available to the entire congregation as they become available and will be thoroughly dis-

**CONTINUED ON PAGE 18**

## COMING

*This Summer***Tuesdays, July 3, 10, 17, 24    Live & Learn with Gerdy Trachtman    10:30 am – 12 pm**

This is an ideal 4-session course for people with little-to-no knowledge of the Hebrew alphabet (alef-bet) or who found learning the alef-bet too daunting. We will learn modern Hebrew phrases and vocabulary by using English transliteration. Gerdy uses an innovative, easy and fun method that emphasizes conversation without needing to decode the Hebrew alphabet. Students will find themselves conversing in Hebrew at the very first class!

**Sunday, July 8 and August 5    Team Beth Ami – Cycling Club Ride    8 am**

We will be getting together to enjoy the great outdoors on two wheels once a month, weather permitting – often with Rabbi Pokras leading the way. All rides will have at least two marshals, and nobody will be left behind. Also, we might just stop along the way for a snack! All participants should have their own bicycle (in good working order) and be comfortable riding at an average pace of 10 mph. Please make

sure to bring your helmet and at least one water bottle for the ride, as these are required for your safety. RSVP is REQUIRED for participation. Questions? Contact: Mark Ezrin (301-502-8990) or mark@ezrinfamily.com.

**Monday, July 9    Broadway Buzz with Steve Friedman    10:30 am – 12 pm**

Topic: More Top 40 Hits & The Broadway Musical. Don't miss this popular Monday morning lecture, featuring footage, facts, and always some live performance. Free for Temple members; \$10 for guests.

**Monday, August 13    Broadway Buzz with Steve Friedman    10:30 am – 12 pm**

Topic: Tin Pan Alley & The Broadway Musical. Don't miss this popular Monday morning lecture, featuring footage, facts, and always some live performance. Free for Temple members; \$10 for guests.

**Wednesday, July 18    Screening of "Father's Footsteps"    7:30 pm**

Israel Matters is thrilled to invite you to a free screening of "Father's Footsteps," nominated for 5 Israeli Ophir Academy Awards! This film is a tender emotional portrait of a son whose allegiance to his father is tested, and of a fiercely protective mother trying to shield her children from the truth. Starring Gad Elmaleh and Yael Abecassis, two accomplished and award-winning actors.

**Sunday, August 19    Grand Slam Sunday – Nats Game    1:35 pm**

You are invited to join us as a community to watch the Nationals take on the Miami Marlins, on August 19th. There will be two hours of family friendly programming leading up to the first pitch and Temple Beth Ami has reserved a block of seats to join the nearly 2000 members of the Jewish community who come out to show their support! Check the Up to the Minute for the registration link and order your tickets today!

## COMING *This Summer*



**Tuesdays, August 21, 28**

**Live & Learn with Sharon Tash**

**10:30 am – 12 pm**

### **Topic: Ben-Gurion Epilogue**

In 1968, when he was 82 years old, David Ben Gurion agreed to be interviewed on film. This extended and revealing interview became lost in the archives and, thanks to some sleuthing and determination, director Yariv Mozer brings this amazing interview to today's audiences. Temple Beth Ami is excited to screen this introspective, soul-searching film that includes interviews and reflections of David Ben-Gurion, providing a surprising vision for today's crucial decisions and for the future of Israel. This film won the 2017 Israeli Film and TV Academy Award for Best

Documentary. Sharon Tash will present the film and discussion over the two sessions.



**Friday, August 31**

**Picnic Shabbat & Services**

**6:45 pm**

Our final Picnic Shabbat of the season will begin with a special New & Prospective Member Welcome (6 - 6:45 pm) for all new Temple members since 9/1/2017, followed by our picnic dinner (6:45 pm) – bring your own dinner to enjoy or order pizza from the Temple – and concludes with Shabbat services with the ShabbaTones, our Temple band, at 7:30 pm.



**ORDER NOW!**

**Honey & Challah**

What better way to welcome the Jewish New Year than with a 1 lb. homemade round challah (lovingly baked by our challah club) and a 1 lb. jar of Metro Raw Honey (your choice of 5 flavors)! Orders must be received by Tuesday, 9/4; pickup your order in the Temple lobby on Friday, 9/7 (between 10 am – 3 pm). \$18 per bag. Order online ([www.bethami.org](http://www.bethami.org)). Complimentary honey tasting (all flavors available in the gift set) on Friday, 8/31 at 6:45 pm, prior to the Picnic Shabbat Service at 7:30 pm.



### **ANNOUNCING ADULT B'NAI MITZVAH CLASS -- STARTING THIS FALL!**

The Temple Beth Ami clergy are excited to announce the formation of a new Adult B'nai Mitzvah Class (see Rabbi Pokras' article in this month's Chadashot). The Adult B'nai Mitzvah class will be comprised of 10 Sunday morning sessions, taught by the Rabbis (from 11-12:30 pm) from 9/23 – 12/16 and 15 Tuesday evening classes (focusing on Alef-Bet, Hebrew fluency and prayerbook Hebrew) taught by the Cantor from 6:30-8 pm. The Adult B'nai Mitzvah ceremony will take place on Shavuot (Saturday evening, 6/9/19, at 5:30 pm). Cost: \$300. Register online by 9/4. Minimum class size required. Questions? Contact any of our clergy ([RGP@bethami.org](mailto:RGP@bethami.org), [RBW@bethami.org](mailto:RBW@bethami.org), or [CLE@bethami.org](mailto:CLE@bethami.org)).

**SEPTEMBER CHADASHOT  
DEADLINE JULY 25**

## Introduction to Judaism

### COMING THIS FALL: INTRODUCTION TO JUDAISM CLASS

Taught by Rabbis Pokras and Weiss, the Intro to Judaism class is open to all adults looking to delve into a broad variety of topics. You AND your questions are welcome! 10 session course will meet on Sunday mornings (11 am – 12:30 pm), beginning on 9/23 and culminating on 12/16. Cost: \$100 pp (\$150 couple). Register online by 9/4. Minimum class size is required.

### Torah/Haftarah Chanters for the High Holy Days Needed

Learn special High Holy Days Torah trope. Knowledge of Hebrew is a must. Training will be held over the summer. Contact Cantor Eschler at cle@bethami.org or Susan Neumann at spn@bethami.org or 301-340-6818.

### All accounts for this fiscal year, July 1, 2017 – June 30, 2018, should now be paid in full.

It is very important to us that everyone who wants to be is able to be members of our Temple community. We are here to help you, but we need to hear from you. Unless our Executive Director, Janice Rosenblatt, is contacted by you, **all accounts not paid in full for the past fiscal year (July 1, 2016 - June 30, 2017) will be resigned as of June 30.**

### NEWLYWEDS

Congratulations on your recent marriage. We are so happy for you. If you are the child of a Temple members and were married after September 2017, we are giving you a gift of a year's free membership. Please go on line (www.bethami.org), download a membership form and send it to the Temple office. Your membership includes your High Holy Days tickets for this year. If you received a membership this past year, please remember that you must rejoin the Temple as your membership expires on June 30.

### Congregational Trip to Morocco .... Update!

Response to the congregation's trip to Morocco, to be led by Rabbi Luxemburg in spring 2019, has been very positive. Nearly 60 people attended the May 9th introduction and orientation meeting, and there was great interest and enthusiasm. As of this issue of Chadashot, 25 Temple members have signed up for the trip. There remain 15 open spaces before the maximum of 40 participants is reached. Interested Temple members are encouraged to sign up now. If there are any open spaces remaining at the end of August, they will be available to non-members beginning on September 1. Sign up on the ARZAWorld website on a first come/ first served basis. Watch for further updates during the summer on "Up to the Minute" and the Temple website.



### Tisha B'Av

Tisha B'Av, the ninth day of the Hebrew month of Av, commemorates the anniversary of the destruction of the First and Second Temples in ancient Jerusalem and is observed as a national day of mourning for the Jewish people. During Tisha B'Av, many Jews fast and devote themselves to a renewed commitment to rebuilding and repairing our relationships with one another. Tisha B'Av will be observed on Saturday, July 21; we will be partnering with our neighboring congregation, Kol Shalom. Watch the UTTM for details.



## TIKKUN OLAM

### *Community Service Projects*



#### LEND A HAND

Temple Beth Ami Community Service Projects

Thank you in advance for your support!

(For information on additional TBA community service projects, visit [bethami.org/community/social](http://bethami.org/community/social)

[action/TikkunOlam.](http://bethami.org/community/social))

#### JOBS NEEDED - A SPECIAL REQUEST

As many of us who are children of immigrants to the U.S. know, one of our parents' prized accomplishments was getting a job so they could support their families. Similar desires exist among refugee families escaping oppression in Syria and other countries when they arrive in our community today. TBA, together with several churches and synagogues in our area, has been helping some of these families with their resettlement. One of the biggest remaining challenges is finding work for the breadwinners in these families. Many of these people come with limited English proficiency but with professional skills such as having been electricians or chefs, or having had other valuable professional experience. If you can help with finding jobs of any kind for our new community members, please contact Harry Hertz at [hertzhandf@gmail.com](mailto:hertzhandf@gmail.com), or Mark Joffe at [marksjoffe@gmail.com](mailto:marksjoffe@gmail.com). Thank you for any leads or suggestion you may have in this area.

#### VOLUNTEERS NEEDED

- **Interfaith Works Women's Center Meals Week, July 29 - August 5** - Volunteers needed to help provide meals/supplies for this Rockville women's shelter 7/29-8/5. For more information or to volunteer, contact Jeanne Kahn at 240-994-6804 or [jeannekahn@aol.com](mailto:jeannekahn@aol.com), or Elizabeth Joseloff at [joseloff@hotmail.com](mailto:joseloff@hotmail.com).
- **Interested in Tikkun Olam activities at TBA?** - The Tikkun Olam Committee will hold its annual planning meeting on Tuesday, July 10, 6:30 pm, at Mark & Arlynn Joffe's house (dinner included). We'd love to have you join us. For more information or to RSVP to attend, contact Mark Joffe at [marksjoffe@gmail.com](mailto:marksjoffe@gmail.com) or Joanne Brodsky at [brodsky.joanne@gmail.com](mailto:brodsky.joanne@gmail.com).

- **Community Ministries of Rockville (CMR)** - Child care providers and tutors ages 14+ needed this fall for the Language Outreach Program. (SSL hours available.) For more information on this and other CMR volunteer opportunities, contact [andreakwink@cmrocks.org](mailto:andreakwink@cmrocks.org).

#### COLLECTIONS

##### THANK YOU FOR SUPPORTING THESE DRIVES!

- **School Supplies for South Lake Elementary School** - Help provide new/gently used backpacks, composition notebooks (marble), pencils, pencil pouches, scissors, rulers, and glue sticks for students whose families are unable to afford such purchases. Please bring these much-needed items to the box in the Temple lobby through August 17.
- **Healthy Canned Food** - Help replenish the supply of healthy canned proteins (tuna, chicken & salmon), low-sodium vegetables, and fruit in 100% juice for clients of the Manna Food Center and Nourish Now. Collection runs from August 22-September 6, including during the Picnic Shabbat on August 31.
- **Keep Those Box Tops for Education (BTE) labels coming!** - Bring your bright pink labels to the collection boxes in the Temple lobby, Religious School office, and Nursery School office. Have a question? Contact Bernard Silverstein at [cynbern@verizon.net](mailto:cynbern@verizon.net). (Also, see article elsewhere in this issue for more information.)
- **Heads-Up re October Coats & Socks Drive** - Donate new/gently used coats and socks for men, women, and children for the Interfaith Clothing Center (adult coats/socks) and South Lake ES children (children's coats/socks). Collection boxes will be in the Temple lobby from October 1-25.

#### IN THE COMMUNITY

- **Community Ministries of Rockville (CMR)** - Volunteer needed to represent TBA on CMR's Faith Advisory Committee and serve as a liaison between TBA and CMR. Main purpose is to let the Temple know about CMR's services/activities and how TBA members can help. Committee meets every 4 to 8 weeks. Contact Lynn Goodman at [lynngoodman13@yahoo.com](mailto:lynngoodman13@yahoo.com) for more information or to volunteer.

## JULY 1 – THE START OF THE NEW FISCAL YEAR

*“The members of the congregation must nurture one another because they need one another. They simply cannot do it alone.” – Rabbi Lawrence Kushner*

The Temple depends on the support of all its members. In order for us to continue to meet the religious and pastoral needs of all our members, and to provide programs, education, caring community, social events, financial assistance, and more for all our congregants, we need to be able to count on all of our members to pay their annual commitment (dues), whether full or adjusted.

### IMPORTANT CHANGES:

- Invoices for the Annual Commitment for FY19 (July 1, 2018 - June 30, 2019) will be mailed in early July.
- Please note that all children in Machane TBA will have been globally promoted; this is an accounting function and will appear as part of your commitment – you must still register for Machane TBA (contact Bobbie Chait at [bac@bethami.org](mailto:bac@bethami.org)).
- Anyone needing financial assistance must complete the forms and return them no later than June 30 (contact [FinAid@bethami.org](mailto:FinAid@bethami.org) for assistance)

Thank you for your continued support of Temple Beth Ami. Without YOU, we could not be here to do what we do.

The Jewish Community Theater of Montgomery County (JCTMC) and The TBA Players present THE MELTING POT by Israel Zangwill, a 1908 play about anti-Semitism and anti-immigrant hatred. The play depicts the life of a Sephardic Russian-Jewish immigrant family, the Quixanos, particularly David Quixano, who survived the pogrom that killed his family. Wanting to look forward to a society free of ethnic divisions rather than backward at his traumatic past, he composes a symphony called "The Crucible" in which he expresses hope for a world in which all such divisions have melted away. The play has humor, romance, and heartbreak. Performances at the Temple, Saturday, August 11, at 8 pm, and Sunday, August 12, at 1 pm. Look for upcoming info about ticket sales.

## SERVICES CONTINUED FROM PAGE 1

### Friday, August 10

6:30 pm Tot Shabbat

7:30 pm Erev Shabbat Service

### Saturday, August 11

10:30 am Shabbat Chapel Service

### Sunday, August 12

10:45 am Sunday Minyan

### Friday, August 17

6:30 pm Spirit of Shabbat

### Saturday, August 18

10:30 am Shabbat Service

Bat Mitzvah: Elise Schneider

### Sunday, August 19

10:45 am Sunday Minyan

### Friday, August 24

7:30 pm Erev Shabbat Service

### Saturday, August 25

10:30 am Shabbat Service

Bat Mitzvah: Alyson Pilloff

### Sunday, August 26

10:45 am Sunday Minyan

### Friday, August 31

7:30 pm Erev Shabbat Picnic Service

### Saturday, September 1

10:30 am Shabbat Service

Bat Mitzvah: Hannah Tomasetti

### Sunday, September 2

10:45 am Sunday Minyan

### Summer Hours Began on June 1

During the Summer, the building closes at 7pm on Monday and Tuesday evenings. The building will reopen on Tuesday evenings starting September 4.

## BROTHERHOOD

### News

#### Join Brotherhood Today

The Brotherhood of Beth Ami is an organization that sustains a wide range of Temple and community activities. By joining the Brotherhood, your support will help provide kiddush cups to our youth becoming B'nai Mitzvah, financial aid for Rebuilding Together, meals for the Community Based Shelter, and sponsorship of family events. Join the Brotherhood today and enjoy great entertainment while expanding your network of friends and business contacts.

Join us for our fabulous upcoming events with good friends, great food and interesting speakers. Our brunches feature lox, whitefish salad, herring, cheeses and assorted bagels, as well as coffee and juice. Check the website, [www.bethami.org](http://www.bethami.org), to

join the Brotherhood, which entitles you to discounts on our events. Join us on Sunday mornings each week of religious school for our Sunday Morning Cafe. Last Year was action-packed with guest speakers, participation in Rebuilding Together, the Temple Golf Outing at Worthington Manor, Sporting Events, softball league, and many other exciting things! Don't be left out. Get involved with the Brotherhood, SIGN UP TODAY.

#### CALL FOR NOMINATIONS!

The Temple Beth Ami Brotherhood nominating committee has announced its call for nominations for the 2018-19 board.

The Brotherhood nominating committee asks that nominations be made in advance

or from the floor during the annual election meeting, which will take place in July, date TBD, 6:30 pm, at Buca Di Beppo Italian Restaurant, 122 Kentlands Blvd., Gaithersburg, MD 20878

Both the President and Treasurer positions are open for election. If you wish to seek office, or if you would like to nominate a fellow member for a Board position, please submit the nomination to Ira Greenspan at [iragreenspan@aol.com](mailto:iragreenspan@aol.com)

We would like to have as many of the nominations as possible prior to our meeting in order to prepare the ballots. Please contact Ira with any questions and help us select a new president and treasurer for the next Brotherhood year beginning on September 1, 2018





## WOMEN OF TEMPLE BETH AMI

### News

#### Confirmation Congratulations

Mazel tov to the 28 young men and women who were confirmed in May. We hope the Tanach you each received from WTBA and Brotherhood will become a well-used source of joy and continued learning.

#### Mah Jongg

We will continue our drop-in Mah Jongg games during the summer. Please join WTBA at the Temple for Mah Jongg sessions through the summer on Monday afternoons from 1 – 3 pm. Play with old friends and make some new ones! Every skill level is welcome. Interested in learning how to play or have any questions? Please contact Rachel Maryn at rmaryn@verizon.net.

#### WTBA Board Training

We will be holding a Board Orientation for the incoming Board members and committee chairs at the Temple on Sunday, July 29 from 9:30am to 1:00pm. We hope all of our leaders will be able to join us for a morning of planning, socializing, and fun. A light breakfast and a full lunch are included. Please RSVP by 7/22 to Rhona Arbit at arbitfamily@gmail.com.

#### Women's Shelter Meals

Temple Beth Ami will be preparing and serving meals during the week of July 29 - August 5 for the residents in the Interfaith Works Women's Center in Rockville. The IW Women's Center is a 70-bed emergency women's shelter that provides housing, medical, mental health, and social services. There are also lots of opportunities to provide food and serve meals throughout the week. Please contact Jeanne Kahn at jeannekahn@aol.com or Elizabeth Joseloff

at ejoseloff@gmail.com to volunteer.

#### Manna Food Sorting

A huge thank you to the many volunteers who helped sort food at Manna Food Center in April. Lynn Stander, Ellen Harrison, Scott Harrison, Elizabeth Joseloff, Adam Levy, Mark Silverman, Rugh Shevach, Nicole Zimmerman, and Jana Kersner. A special thank you to Rhonda Gaynor for coordinating this Tikkun Olam activity.

The next Manna Food Center sorting will be September 25 at 7 pm. If you are interested in volunteering, please contact Rhonda Gaynor at Rhonda.gaynor@gmail.com.

#### Yoga Stretch and Strengthen

Join WTBA fall yoga classes, beginning on Sunday, September 23. Stretch, strengthen and breathe with multi-level yoga classes including options for beginners as well as advanced students. No prior yoga experience is necessary. Our yoga instructors will be TBA members Monya and David Cohen, both Yoga Alliance 200-hour yoga teachers. The cost has yet to be determined but will be approximately \$6 per class for WTBA and Brotherhood members and \$7 per class for non-members. All of the proceeds from the classes will be donated to WTBA's Stuff-a-Duff project and the Rockville Days for Girls chapter. For more information, please check our website or flyers in the Temple lobby.

Please dress in comfortable, stretchy clothes and bring a yoga mat, two yoga blocks, a water bottle, and a pillow, folded blanket or cushion to elevate your hips. RSVP online by September 16. Contact Monya Cohen at mjcohen0636@gmail.com

with any questions.

#### Crafts for a Cause

Thanks very much to the 14 women who participated in Crafts for a Cause on April 25. Following a pizza and salad dinner, the group made cards and 100 Paracord Survival bracelets for deployed troops and First Responders.

The paracord bracelets can be quickly and easily unraveled in an emergency to provide 7½ feet of sturdy, strong rope that has many uses, including some potential life-saving ones. The bracelets were sent to Operation Gratitude, an organization that annually delivers "200,000+ care packages to Veterans, First Responders, New Recruits, Wounded Heroes, their Care Givers, and to individually named U.S. service members deployed overseas and their families waiting at home." Operation Gratitude includes a Paracord Survival bracelet in each of their care packages.

Crafts for a Cause was a fun, rewarding experience for those who participated in this act of Tikkun Olam. Thank you to all of the women who volunteered, and especially to Rhona Arbit, Jeanne Kahn, and Sirina Tsai for organizing the evening!

#### Makeovers, Manicures and Mitzvah Event

Thank you to everyone who participated in the Makeovers, Manicures and Mitzvah event held at Saks Fifth Avenue in Chevy Chase in May. There was incredible warmth and positive energy in the room as WTBA and Next Dor members took time to simply enjoy each other's company, celebrate and enhance our own special beauty, and support

CONTINUED ON PAGE 20

## NURSERY SCHOOL NEWS

*Paula Sayag,  
Director*



TBANS' mission statement begins with the words, "We are welcoming," and we treasure every opportunity we create to demonstrate that value. Here are just 6 examples of events held this past school year when we were privileged to welcome guests into our community to share the warmth and success we foster each day.



**Alumni Day:** On a Friday morning in January when MCPS was closed, we welcomed K-2 TBANS alumni and their parents to participate in our monthly Community Shabbat. The alumni led us in song and enjoyed an extended Oneg with crafts and photo-ops while they visited with their preschool teachers. The students reflected on how much they missed TBANS!

**Paradigm Project Conference:** In April, TBANS hosted 50+ Jewish early childhood educators from all around the country. They came as a precursor to their annual conference. They toured our classrooms and learned about "Outdoor Playscapes." Our school was chosen because we have a state-of-the-



art playground. We shared the process to establish the playground and the incredible ways our teachers and children use the space to facilitate each child's developmental goals. We relished the opportunity to be a model for the national Jewish early childhood community.

### Truck Day:

In May, 40+ children from South Lake Elementary came to our Truck Day. With almost 30 vehicles



to explore and Carmen's ice treats, it was a fun day for all. Truck Day is always a highlight and sharing it with the Temple's partner school enhanced the benefit. Combining children from two different communities to enthusiastically share a special activity meets everyone's goals.

Each age group has also created oppor-

tunities to welcome guests, and particularly engage the visitors and children in Jewish experiences.



The Bets hosted a "Passover Workshop." Each child had a parent or grandparent spend time in school making Seder items and hearing the Bet version of the Exodus. The adults were duly impressed with the children's knowledge of the holiday, and the children loved making projects that they took home to use at their families' Seder.



The Gimels organized a "Hamantashen Bake." Several parents and grandparents helped Gimel children roll dough, cut circles, add sweet flavors, and pinch triangles. What's not to love! The adults were more covered in flour than

CONTINUED ON PAGE 11

**B'NAI MITZVAH***Profiles*

Please join with us at Shabbat Services during the months of July and August as we celebrate with...

**RAVYN CASSILE TREBY,**

daughter of Megan Treby and Mandel Brown, will become a Bat Mitzvah on Saturday, July 14. She is in eighth grade at Rocky Hill Middle School. Ravyn has an older brother, Joshua. For her Bat Mitzvah project, Ravyn is raising funds for CRPS in honor of Machane

teacher alum Eileen Schectman.

**CHARLOTTE HANDEL,**

daughter of Heather and David, will become a Bat Mitzvah on Monday, August 6 in Israel. She is in seventh grade at Robert Frost Middle School. Charlotte has two older brothers, Ryan and Liam.

**ELISE MICHELLE SCHNEIDER,**

daughter of Vicki and David, will become a Bat Mitzvah on Saturday, August 18. She is in eighth grade at Gaithersburg Middle School. Elise has an older sister, Jenna.

**ALYSON PILLOFF,**

daughter of Liz and Dan, will become a Bat Mitzvah on Saturday, August 25. She is in eighth grade at Lakelands Park Middle School. Alyson has a younger sister, Kayla. For her Bat Mitzvah project, Alyson is collecting school supplies for a local elementary school.

**TBANS CONTINUED FROM PAGE 10**

the children, but everyone devoured the product as they recounted the story of Purim.



The Dalets coordinated "Special Friends Day." Each child invited a special adult to join them in performing "mitzvah projects." Aunts, neighbors and grandpas decorated

cards to accompany books donated to a disadvantaged school, made dog treats for an animal shelter, and prepared a healthy snack to share. We read a book and sang songs about performing mitzvot. Our Dalet children understand the importance of mitzvot, and our Special Friends were awed by the "Joyful Jewish Learning" that takes place at TBANS, as promised by our school's tag line.

In each of these events, we achieved our mission:

"We are a welcoming and inclusive Reform Jewish community, where passionate teachers nurture and enrich the lives of our children and families in a joyful learning environment.

At Temple Beth Ami Nursery School, children acquire skills for positive, life-long social and emotional development. Teachers encourage curiosity, questioning, and a love of learning so that each child builds a solid foundation for continued school success.

As a learning community of educators and parents, we teach by providing children with opportunities to interact, explore and problem solve through intentional and creative play."

## MACHANE TBA NEWS

*Kim Roberts,  
Director*



### Calendar

**Mon - Fri, July 2 - 3 & 5 - 6**

Taste of Kayitz/Kayitz  
Week 3

**Mon - Fri, July 9 - 13**

Taste of Kayitz/Kayitz  
Week 4

**Mon - Fri, July 16 - 20**

Taste of Kayitz/Kayitz  
Week 5

**Mon - Fri, July 23 - 27**

Taste of Kayitz/Kayitz  
Week 6

**Mon - Fri, July 30 - 31, Aug  
1 - 3**

Taste of Kayitz/Kayitz  
Week 7

**Mon - Fri, Aug 6 - 10**

Taste of Kayitz/Kayitz  
Week 8

**Mon - Fri, Aug 13 - 17**

Kayitz  
Week 9



### KEHILLAH

The Hebrew root for the word “Kehillah” is Kuf, Hey, Lamed, or “Kahal,” which means assembly, community, or even congregation in English. The notion of Kehillah is one which is central to our mission at Machane TBA. One could even make the case to say that it is our *raison d’être* (reason for being). It is our mission that every single one of our students not only has a connection to Temple Beth Ami, but that they have real and lasting connections to one another and to our staff. For that reason, we have built Kehillah into all aspects of our program. From the youngest students to the oldest ones, Machane TBA has Kehillah community-building programming available for each of our cohorts.

During the course of the year, Primary (grades K-2) students have the option of attending two events which are held on a Sunday morning immediately following Machane TBA classes. Additionally, Primary students have the option to enroll in 3 trimesters of 7-week educational and social programs which are also held immediately following class on Sunday mornings.

Grades 3-6 have two “Erev Machane” overnight programs which are immersive, camp-style overnights that occur on Saturday evenings at TBA. The Erev Machane component is designed to strengthen students’ connections to the curriculum, the staff, their peers, and the TBA community. Other Kehillah events for grades 3-6 include monthly programs such as movie club and gaga. These events are held on Sundays as soon as classes end at 12:30 pm.

TBA jrHigh and TBAHigh have ongoing opportunities for community-building. TBA jrHigh has a snow tubing trip and the NFTY/MAR “MAJYK” retreat for 6th-8th graders, and TBAHigh has monthly social programs which take place on Sunday afternoons. Additionally, there are High Holiday teen services and dedicated TBAHigh Shabbat services. TBAHigh students in every grade have remarkable trips and retreats, including the 8th grade overnight at the Baltimore Aquarium and (this year) the 11th and 12th grade Southern Civil Rights Trip. All TBA teens are encouraged to attend one or all regional NFTY or BBYO events, including NFTY Fall Kallah which will take place this year on November 16-18.

TBAHigh has a Student Council with 25 members. The Student Council Executive Board has 5 members. These members head up committees of 5 teen leaders each. The Executive Board meets every week and the committees meet monthly. With the guidance of Machane staff, these student leaders help to plan social, religious/cultural, and social action programming throughout the year for TBA teens. Once a month, TBAHigh also offers a leadership elective in which any student who is interested in helping to lead programming can learn about aspects of leadership and then put these skills into practice as we create programs for the school.

Stay tuned for more detailed announcements on all of our Kehillah programming. There is a place for EVERY student at Machane TBA and we aim for all of our students to avail themselves of our community-building Kehillah.



## TBA HIGH

*Confirmation, Confirmation Rebuilding Together, TBA High Final Night, Graduation*



## SIMCHAS

### *Mazel Tov to...*

**Amanda Kossoff, Madeleine Press, Cathryn Russ, Brooke Goldberg, Sydney Kauff, Elisabeth Sneeringer, Lily Fox, Ravyn Treby, Elise Schneider and Alyson Pilloff** each on becoming a Bat Mitzvah

**Jacob Oshinsky, Max McLenaghan, Jack Goldberg, Zachary Greenspan, Jake Konigsberg, Bryce White and Jack Peyser** each on becoming a Bar Mitzvah

**Our TBANS and Machane teachers** for a great year  
**Our TBANS graduating 4's and their families**  
**Our Machane Confirmands their families and teachers**

**Jill and Rick Finci** on the marriage of their daughter, **Erica**, and **Steve Cunningham**  
**Beth Jolles and James Reznikoff** on their recent marriage

**Janet and Mark Wallace** on the birth of their grandson, **Rocco Lee Albanese**  
**Lynn and Buzz Karpay** on the birth of their granddaughter, **Zoe Perry Weyl**  
**Ann and Bennett Greenberg** on the birth of their granddaughter, **Reese Maya Trundle**

**Special thanks to:**  
**ShabbaTones** for participating in our Picnic Shabbats  
**Our Culinary Crew** for our Challot, Cookies and Cheesecakes  
**Our Shabbat Hospitality Committee**

## GRADUATES

### High School:

**JONATHAN ROSENSTEIN** graduated from Wootton H.S. and will be attending Tulane University. Jonathan is the son of Dan and Missy Rosenstein

**BECCA CARIN** graduated from Poolesville High School. She is taking a gap year in Israel through a program with Aardvark Israel. She will attend University of Maryland College Park. Becca is the daughter of Moira and Josh Carin

**EMILY NADLER** graduated Charles E. Smith Jewish Day School and will be attending the University of Maryland College Park. Emily is the daughter of Marcie and Simon

Nadler.

**NOAH KAPLAN-DAVIS** graduated from Thomas Wootton High School and will be attending UNC Chapel Hill. Noah is the son of Ellen Davis and Myra Kaplan.

**SYDNEY ALBERT**, graduated from Walter Johnson High School as an APEX Scholar and will be attending Duke University. Sydney is the daughter of Stacey and Brad Albert.

**JESSE LEHMAN**, graduated from Quince Orchard High School and will be attending Miami University of Ohio majoring in mechanical engineering. Jesse is the son of Linda and Toby Lehman

**EMILY KATZ**, graduated Cum Laude from Holton Arms and will be attending Elon University. Emily is the daughter of Carolyn and Andy Katz

**MITCH FECHTER** graduated from Walt Whitman High School and will be attending Tulane University, majoring in business and minoring in both Japanese and music technology. Mitch is the son of Jenn and AJ Fechter.

**DANIEL GOODMAN** graduated from Northwest High School and will be attending University of Nevada Las Vegas. Daniel is the son of Lisa and Joel Goodman

**JACK ROSE** graduated from Richard Montgomery and will be attending Bucknell University. Jack is the son of Laura and Pete Rose.

**ZACHARY GOLDMAN**, graduated from Northwest High School and will be attending the University of Maryland, College Park (College of Engineering, Scholars program). Zachary is the son of Mike and Robyn Goldman

**KAYLA EHRLICH** graduated from Washington-Lee High School and will be attending the University of Michigan School of Bioengineering. Kayla is the granddaughter of Don and Livia Weinstein

**EMILY NADLER** graduated from JDS and will be attending the University of Maryland at College Park. Emily is the daughter of Marcie and Simon Nadler

**YARDLEY BORTEN** graduated from Quince Orchard HS and will be attending Tulane University, majoring in early childhood educational psychology. Yardley is the daughter of Cathy and Matt Borten.

**JORDYN TAYLOR** graduated from Wootton High School and will be attending the University of Maryland. Jordyn is the daughter of Stephen and Cheryl Taylor

**RAYNA LANGHOLT** graduated from Quince Orchard High School and will be attending Towson University, majoring in Music Ed, Instrumental. Rayna is the daughter of Alice and Evan Langholt.

**RYAN HANDEL** graduated from the Montgomery Blair High School Science, Math and Computer Science Magnet and will be attending Brown University. Ryan is the son of Heather and David Handel

**LINDSEY GRINSPOON** graduated from Wootton High School and will be attending the University of Wisconsin. Lindsey is the daughter of Marnie and Jeff Grinspoon

**ELI SCHWARTZ** graduated from Quince Orchard High School and will be attending Syracuse University in the BFA Acting program. Eli is the son of Amy Schwartz and Ron Schwartz

**TAYLOR SOROKA** graduated from Wootton High School and will be attending the University of South Carolina studying Marine Science. Taylor is the daughter of Nora and Dave Soroka

**MORGAN GREENSPAN** graduating from Winston Churchill High School and will be attending Highpoint University. Morgan is the daughter of Scott and Tamara Greenspan

**DIANE HURWITZ** graduated from the Holton-Arms School and will be attending Tulane University. Diane is the daughter of Mindy Hurwitz and Hugh Hurwitz

**MADDY ADAMS** graduated from Wootton High School and will be attending St. Mary's College of Maryland. Maddy is the daughter of Susan and Jonathan Adams

**ZACHARY GOODIE** graduated from Northwest High School and will be attending Wake Forest University. Zachary is the son of Jeff and Mary Goodie

**BRENT FREEDMAN** graduated from Quince Orchard High School and will be attending the Honors College at the University of Maryland College Park majoring in Engineering. Brent is the son of Scott and Sarah Freedman.

**ALEX COONIN** graduated from Wootton High School and will be attending Virginia Tech, studying engineering. Alex is the son of Adam and Vina Coonin

**RACHEL HERMAN** graduated from Richard Montgomery High School and will be attending the University of Maryland - College Park as an Elementary Education major. She is also part of the College Park Scholars, Arts Scholars program. Rachel is the daughter of Cheryl and Michael Herman

**MAIYA MARGOLIS**, graduated from Col. Zadok Magruder High

School and will be attending Tulane University Parents. Maiya is the daughter of Aaron and Sharon Margolis

#### College:

**LANIE DAVIS** graduated from Penn State University and will attend University of Pittsburgh studying for her master's degree. Lanie is the daughter of Brad Davis and Suzy Slyn Davis.

**HANNA BERMAN** graduated with a Bachelor of Exercise Science with a minor in Biology. Hanna is the daughter of William and Stacie Berman

**ADAM BOGART** graduated from University of Michigan College of Engineering and will be working for Orbital ATK in the fall.

Adam is the son of Lauren Bogart

**RACHEL CASPER** graduated Summa Cum Laude from the University of Rochester. She is working as a legal research assistant and will be applying to law school in the fall. Rachel is the daughter of Helene and Jeff Casper.

**BEN GOODMAN** graduated from Michigan State University with a degree in Political science. Ben is the son of Lisa and Joel

**JORDYN CHACE** graduated from University of Vermont with a bachelor's in environmental science. Jordyn is the daughter of Diane and Alex Nason

**LIZ CORBETT** graduated from Pace University, Summa Cum Laude and has begun working for CBS Sports, as Business Affairs Coordinator. Liz is the daughter of Becky Corbett.

**ELIZABETH KITT** graduated from Yale University and will be doing a two-year fellowship at National Institutes of Health. Elizabeth is the daughter of Cheryl and Tim Kitt

**JENNA FREEDBERG** graduated Magna Cum Laude from Rensselaer Polytechnic University with a B.S. in Physics. She will be attending University of Minnesota Twin Cities for her doctorate in Physics. Jenna is the daughter of Michelle and Daron Freedberg

**JEFF WILLIAMOWSKY** is receiving his MBA from the University of Chicago Booth School of Business will be working for Deloitte San Francisco. Jeff is the son of Leslie and Larry Williamowsky

**SYDNEY SOROKA** graduated from Ohio State University and is working for Amazon in Joliet, IL. Sydney is the daughter of Nora and Dave Soroka

**LAURA ANNE SCHILLER** graduated from Ithaca College with a Doctor of Physical Therapy degree. Laura is the daughter of Thomas and Janet Schiller

CONTINUED ON PAGE 20



## PHOTO REVIEW

### *Cookie Brigade, Empty Nesters, Good Deeds Day, Crafts for a Cause*





## *WTBA Makeovers @ Saks, TBANS Truck Day, TBA High Final, Machane TBA, Student Council Installation*



## COMMITTEE

### News

#### Tikkun Olam in Action

Ongoing Collections Benefit Area Hungry, Needy Schools, and More

Have you noticed the boxes in the lobby as you enter the Temple? Maybe you're someone who's contributed to the Tikkun Olam Committee's collections before, or maybe you haven't. We sponsor two types of collections—short-term collections for items needed by local organizations that we partner with, and permanent collections that people can contribute to any time they come to the Temple. This article focuses on our three permanent collections: for certain canned proteins and fruits, BoxTops for Education labels, and used eyeglasses. Please read on for details.

- **Lobby Food Drive** - Although we used to collect nonperishable foods in general, Manna Food Center and Nourish Now recently asked us to collect only canned protein and canned fruit, items they feel are of greatest need for low-income families in our area. Please bring cans (preferably 12 oz. or larger) of tuna, chicken, or salmon (no Spam) and fruits in 100% juice (not in syrup) to the box in the Temple lobby.



- **Box Tops for Education (BTE) Labels** - These small, hot pink labels can be found on many items you buy in the grocery store, including on food, storage, cleaning, and other products.

You can find a complete list of the products at <https://www.boxtops4education.com/>. We distribute the labels we collect to needy area schools, which turn them in for cash for school-related needs. To date, we have received 2,300 Box Tops.

Some items at Costco and Target, for example, come in multiples, with multiple labels on the packaging. Just cut those labels off as a group and bring them to the Temple. Individual packages have one label that you can cut off. Please bring your BTE labels to the collection boxes in the Temple lobby (there's a small BTE box attached to the tall Tikkun Olam collection box), Religious School office, and Nursery School office. Contact Bernard Silverstein at

cynbern@verizon.net if you have any questions. (Please trim the labels close to their outlines.)

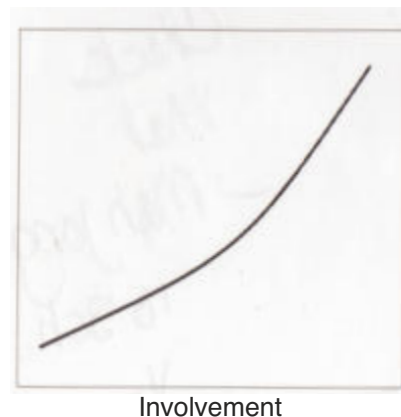
- **Used Prescription Eyeglasses** - Please bring used eyeglasses to the small, designated Lions Club container in the Lobby. The Lions Club will distribute these glasses to people in need.

Thank you for supporting these permanent collections, along with the special, targeted collections that we hold frequently throughout the year. Together, we can make a difference in our community and beyond!

#### PRESIDENT CONTINUED FROM PAGE 2

cussed at Board meetings before any action is taken. I want to remind you that Board meetings are open to the congregation and I encourage you to attend our September, October and/or November meetings at which the research will be discussed. Specific topics for discussion at each meeting will be sent out in advance. Please come, join in the discussions, and make your voice heard.

I hope that during my term as President I can meet those of you whom I do not know and encourage you to become more involved. I would like you to feel the same sense of attachment, pride, and satisfaction that I have for our sacred community. Through increased involvement in the Temple, I believe you will increase your joy and satisfaction.



Like me, your Board is here to serve the Congregation. If you ever have questions, concerns, or feedback of any kind, you should always feel free to contact me. I look forward to working with the Board and with you over these next two years. I thank you for putting your trust in me.



**RABBI** CONTINUED FROM PAGE 1

describes a certain event to a student. It is late at night, and dark outside. Two thieves sneak into a house by crawling down the chimney, and when they are both in – one of them suddenly decides to wash his face. The teacher asks which one washes, the one who came down first or the one who followed?

Which do you think? Why?

The student thinks about it and says it was the first one, because he would be dirtier having gone down first.

The teacher compliments the student's excellent reasoning skill, but the student is wrong – it is the other thief! The student thinks about it, and finally realizes what he had missed – that the second thief would have immediately seen how dirty the first thief was and then assumed that he too was dirty – so the second thief would wash. Excellent logic, right? Again, the teacher would complement the student, before informing him that this answer, too, is wrong. It is the first thief after all. So, the student thinks some more and realizes that any house worth robbing would have mirrors inside, and when the first thief saw himself in the mirror he would realize that he was dirty and wash. As you might have guessed by now, the teacher is just getting started, and it doesn't really matter which thief it was. Rather, the exercise is about how to keep on looking for more angles to understand whatever we are studying.

THIS is how our senior team thinks!

Adult B'nei mitzvah is simple?

**WRONG!**

First, we need to consider what specific information our students would need for a meaningful and successful experience. This part is straightforward: they will need an Introduction to Judaism class to enrich and challenge their current knowledge of our tradition; they also will need to learn Hebrew and about how the prayer book is organized; and they will need time to prepare for a special service in which they become b'nei mitzvah together by chanting from the Torah.

Great! So, we sit down and schedule out a year of classes: 10 sessions of Introduction to Judaism taught by Rabbi Weiss and myself; 3 consecutive 5-session courses on Hebrew taught by Cantor Eschler, each one advancing the level of proficiency so that every student will feel confident; and several sessions for service prep. We looked carefully at the religious school calendar so that we could be present both for our adult students and our kids and we figured out an entire year's program.

Yet how do we maximize the meaning and spiritual power of this process? We are still working on that, but, for starters, why not schedule the service to coincide with the Festival of Shavuot – the holiday in which we commemorate the giving of the Torah at Mount Sinai? In the morning service we celebrate Torah with our confirmation class. Why not make the evening service special by celebrating our adult b'nei mitzvah?

Great, done, we are ready to go. Right?

Well ...

What should we charge? This is after all a massive investment of resources. And what if we opened parts of the process to everyone? After all, the Introduction to Judaism class is also helpful for conversion students, interfaith couples considering a Jewish marriage, and anyone who is interested in learning more on an adult level. Plus, we regularly get requests for adult Hebrew classes. Wouldn't it be great if we opened them up to the congregation?

Ok. So, we are going to make the Intro class and the Hebrew available to everyone. How do we explain which parts are just for adult b'nei mitzvah and which parts are for everyone?

Why, with a very complicated flyer of course!

"You are absolutely right," says the teacher, "But that is not the answer!"

Don't worry. We will have complicated flyers for you to read. However, we also thought it would be a good idea to share some information here in this article. Which is to say, we are happy to announce that we are offering an adult b'nei mitzvah class, which will start in September and culminate on Erev Shavuot, Saturday evening, June 8. The adult b'nei mitzvah fee will be \$300 and will cover everything except for books. If you are interested, please let one of the clergy team know by September 1. We are also happy to announce that we are making the Introduction to Judaism Class (taught on Sunday mornings) and the Hebrew classes (Tuesday evenings) open to the entire congregation for a low fee. We hope that you will join us in learning and celebration. Please look for future announcements with more details, and in the meantime, we hope that you enjoy a relaxing and uncomplicated summer.

Warmly,

*Rabbi Gary Pokras*

## WOMEN OF TBA CONTINUED FROM PAGE 9

Days for Girls, International, a charity that transforms the lives of young women worldwide through hygiene solutions and health education. Congratulations to our door prize drawing winners, Janet Schiller, who won a Sublimage Spa Day, and Barbara Strong, who won a bottle of the CHANEL fragrance of her choice. We would like to recognize all those who gave their time to help make this event a success. First, a big thank you to our corporate sponsors, Saks Fifth Avenue and CHANEL cosmetics, who made this event possible. Thank you also to our special guest for the afternoon, Celeste Mergens, Founder and CEO of Days for Girls, International, who changed her schedule and flew in from out of town to attend. Thank you to our WTBA and Next Dor volunteers, who worked together to make this event a success: Rhona Arbit, Christine Baron, Melissa Bauman, Linda Burka, Catherine Copp, Sarah Freedman, Moira Geronimo-Carin, Judi Goozh, Elizabeth Joseloff, Jeanne Kahn, Janet Schiller, Phyllis Silverman, and Jodi Volk. In addition, thank you to our TBA clergy and staff, especially Rabbi Weiss and Shelly Gordon. Finally, a huge thank you to Holly Lobel for all her hard work with organizing the Makeovers, Manicures, and Mitzvah event with WTBA and Next Dor.

It was a fun time for all who attended! Photos from this event are posted on WTBA's webpage and Facebook page.

### Save the Date

**Fall Membership Brunch** – Sunday, September 16 from 9:30 am – noon.

**WTBA Book Club** – Tuesday, October 2. Book selection TBD.

### Ongoing Projects

**The Judaica Shop** is open this summer on Tuesdays from 9:30 am to 1:30 pm and on Wednesdays from noon until 2 pm. To arrange for other times, call Jackie Manis at 561-212-2104. Volunteers to work in the shop are always needed. Please contact Jackie at jrmhyp@yahoo.com or call (561-212-2104) to volunteer.



**Kippot** for B'nai Mitzvah, Brides and Grooms are available at discount prices through WTBA. View styles at [www.kippah.com](http://www.kippah.com), then contact Michelle Freedberg at [mefreedberg@gmail.com](mailto:mefreedberg@gmail.com) to place your order.

WTBA will present TBA **newlyweds a wedding gift**, the beautiful book *On the Doorposts of Your House: Prayers and Ceremonies for the Jewish Home*. Please email Barbara Ranhand at [Barbara.ranhand@verizon.net](mailto:Barbara.ranhand@verizon.net) if you have information about any Temple families who are planning a wedding.

### WTBA E-mail Address

Do you have a question about the Women of Temple Beth Ami but don't know who to ask? Would you like to suggest a program or project? WTBA has set up an e-mail address specifically for these types of questions: [womenoftemplebethami@gmail.com](mailto:womenoftemplebethami@gmail.com). We look forward to hearing from you!

### Elizabeth Joseloff

WTBA Chadashot article editor  
[ejoseloff@gmail.com](mailto:ejoseloff@gmail.com)

## GRADUATES CONTINUED FROM PAGE 15

**JACLYN DOSIK** graduated with honors from University of Michigan with a B.S. in Kinesiology. She is attending graduate school at UVA for a M.Ed. in Kinesiology. Jaclyn is the daughter of Susan and Ed Dosik

**JOSH GRITZ** graduated from University of Virginia, with a major in Architecture and a minor in engineering. He will be working for Clark Construction in the virtual design department. Josh is the son of Abby and Shawn Gritz

**JENNA WEINBERG** graduated from Towson University with a bachelor's degree in Entrepreneurship and a minor in Marketing. She will be joining Stanley Black and Decker in their marketing and sales development program in Pittsburgh. Jenna is the daughter of Joel and Amy Weinberg.

**BRADLEY WALKER** graduated from Gettysburg College and will be working for Clark Construction in the finance department as a business manager. Bradley is the son of Judith and Kyle Walker



## WE GRATEFULLY *Acknowledge*

A contribution to a Temple fund is a meaningful way to support the Temple community while honoring a birthday, recuperation, wedding, graduation, birth or any special occasion. Donations may also be made in memory of loved one. For a minimum \$10 donation, an acknowledgement will be sent to the person you wish to honor or the family of the deceased. If you have any questions about existing funds or wish to establish a fund, please call Janice Rosenblatt, Executive Director, at 301.340.6818.

### ADULT EDUCATION FUND

In memory of:

MURRAY STEIN by Mark and Olivia Sheinkopf, Michael and Gail Kaltman  
DAN ZWICK, step-father of Eric Meyers, by Donald and Marcia Kaplan

### ANTI-ADDICTION FUND IN MEMORY OF SCOTT STERNBERG

In honor of:

The TBA CLERGY and STAFF for the support they provided during the internment and shiva for our beloved husband and father, Gary Tepper, by Judy Tepper, Rachel Tepper Paley and Alex Tepper

In memory of:

SCOTT STERNBERG, son of William and Ellen Sternberg, by Kirk and Andrea Denicoff, Jane Jacobs  
GARY TEPPER, husband of Judy Fox-Tepper, by Susan and Lloyd Lense, Michael, Rachel and Alissa Maryn, Debbie, Marc, Toby and Reid Shepard, Lawrence and Leslie Block, Sharon and Tom Fechter, Lori and Bruce Dubinsky, Bob Rosecrans, Brian and Joan Ochs, Marissa McRae, Karen Garber, Trudi and Jeff Opad, Ellen, Bill, Lauren, and Bradley

Sternberg, Debbie Koss and Rich Goldstein, Cathy Friedman, Neil and Linda Burka, Daniel and Pamela Wojnilower, John Wassell & Gail Kaplan-Wassell, Ken and Lori Rudin, Jonathan and Joy Stern and family, Barbara and Neil Willens, Andrea and Kirk Denicoff, Jeneane Miller, Amy and Stuart Turow, Monya and David Cohen, Mitchell and Judith Glassman, Edward and Elinor Sondik, Rebecca Yaghoubian, Darryl and Edythe Runett, Neil and Natalie Simon, Jeffrey and Wendy Schloss, Paula Sayag, Joel and Ann Friedman, Elizabeth Herington and Laurence Platt, Adam and Madeline Weinstock, Mark and Lisa Kirsch, Susan Felzer, Rory, Debbie, Matthew and Jordan Schick, Richard Edelman and Robin Shipper, Steven, Monica, Megan, Sara, Alyssa and Margaret Winkler, Jerry and Karen Greenberg, Julie and Danny Krakower, Catherine Copp, Leslie and Allan Slan, Wendy Schelew, Alan and Karen Asman, Joyce Wilker, Leslie and Larry Kline, David and Margo Rosenberg, Wayne and Elizabeth Shore, Jody Rosenblum, Stuart and Susan Wohl, Mike Wolly, Terry and Rhona Arbit, Robin and Tom Temin, Mara and Larry Bier, Allan and Elyse Weiner, Ilene Heller, Roy Eskow and Staff, Lawrence Rosenblum, Bernard and Cynthia Silverstein, Dottie Shermet, Terry Chen, Michael and Lisa Chen and Steven Chen and Christina Hansen, Joan and David Weiss, Lynne and Rick Gans, Mark Schneider, Harold and Fran Frohman, Carol and Murray Stein, Shelley Block and Lee Levine, Carol and Barry Hartman, Robert and Anita Hansen, Cindi Drake, Jane Jacobs

### CANTOR'S DISCRETIONARY FUND

In honor of:

CANTOR LARRY ESCHLER AND CANTORAL SOLOIST JOSHANA ERENBURG for the support

during the passing of my father, Bob Davis, by Ellen Davis and family

CANTOR ESCHLER By Betty and Tom Loggia  
THE BIRTH OF ROCCO LEE ALBANESE, OUR NEW GRANDSON, by Janet and Mark Wallace  
CANTOR LARRY ESCHLER in appreciation for leading the memorial service for HARRIET STURM by Arthur Sturm  
CANTOR LARRY ESCHLER in appreciation of his guidance and support in preparing Jacob Oshinsky for his Bar Mitzvah and for leading such a warm and beautiful service by Stephanie and Robert Oshinsky  
JACOB CARIN on the occasion of his Confirmation by Janet and Mark Wallace

### COMPUTER FUND

In memory of:

ANNA LOGGIA on her Yahrzeit by Thomas and Elizabeth Loggia

### ENCORE

In memory of:

GARY TEPPER, husband of Judy Fox-Tepper, by Olivia and Mark Sheinkopf

### ISRAEL TRAVEL FUND IN MEMORY OF DAVID CARIN

In honor of:

MOIRA and JOSH CARIN in celebration of their wedding anniversary by Craig and Virginia Collier

CANTOR LARRY ESCHLER AND CANTORIAL SOLOIST JOSHANA ERENBURG for being part of our vow renewal ceremony by Moira and Josh Carin

### LIVE & LEARN FUND IN MEMORY OF SALLY B. KERA

In memory of:

SHELDON MARTIN by Carol Martin

MURRAY STEIN, husband of Carol Stein, by Brian and Joan Ochs, Neil and Barbara Willens, Sherri and Jim Lieberman, Gail and Arnold Brodsky, Judy Fox-Teppe, Barbara and Jon Ranhand, Michael Wolly, Edythe and Darryl Runett, Gail and Arnold Brodsky, Marge and Bob Winick, Catherine Copp, Martin and Sandra Norwitz

LOIS SCHWARTZ on her yahrzeit by Jeanne and David Kahn

HARRIET STURM, wife of Art Sturm, by Jeanne and David Kahn

### **MACHANE TBA (RELIGIOUS EDUCATION) AND YOUTH PROGRAMS FUND**

In memory of:

ANNETTE COHEN, mother of Lisa Goodman, by Jeanne and David Kahn

### **MACHANE TBA (RELIGIOUS EDUCATION) FUND**

In honor of:

CARA O'CONNOR on being a great second grade Machane teacher by Andrew Weinstein, son of Ronald and Lisa Weinstein

JODY ROSENBLUM on being a great Pre-K teacher by Hannah Weinstein, daughter of Ronald and Lisa Weinstein

JODY ROSENBLUM in appreciation of Crew's

Gan Education by the Wernick Family

ERIN FELRICE in appreciation of Carter's Bet Education by the Wernick Family

LISA GOODMAN for her patience and enthusiasm while tutoring Jacob for becoming a Bar Mitzvah by Robert and Stephanie Oshinsky

In memory of:

ANNETTE COHEN, mother of Lisa Goodman, by Henry and Laurie Friedman, Samuel and Kristin Erdheim and family

### **MACHANE TBA (RELIGIOUS**

### **EDUCATION) RESOURCE/TUTORIAL FUND**

In memory of:

ANNETTE COHEN, mother of Lisa Goodman, by Scott and Jacqueline Kauff

### **MACHANE TBA (RELIGIOUS EDUCATION) STUDENT ENRICHMENT FUND IN MEMORY OF JUDY TREBY**

In honor of:

ANITA AND LAWRENCE GELBURD'S 25th Anniversary by Jill and Ali Treby, Megan Treby and Family

In memory of:

STANLEY TREBY and JEFFREY TREBY by the Treby Family

HARRIET STRUM by Olivia and Mark Sheinkopf

### **MACHANE TBA (RELIGIOUS EDUCATION) TZEDAKAH FUND**

In memory of:

ANNETTE COHEN, mother of Lisa Goodman, by Jeffrey and Sheila Walcoff

### **MUSIC EQUIPMENT FUND**

In honor of:

Speedy Recovery to JIM LIEBERMAN by Robin and Tom Temin

In memory of:

Dan Zwick, step-father of Eric Meyers, by Sue Potechin and Mark Kamins

ANNETTE FIALKOFF, mother of David Fialkoff, by Jeanne and David Kahn

### **NURSERY SCHOOL SCHOLARSHIP FUND IN MEMORY OF JOEL BLUE**

In honor of:

RYAN CHIRUMBOLE, son of Susan and Steve Chirumbole, on graduating from American University, by the Temple Beth Ami Nursery School Staff

SAMI SILVER, daughter of Denise and Larry Silver, on graduating from Indiana University, by the Temple Beth Ami Nursery School Staff  
BETH JOLLES and JIM REZNIKOFF on their marriage by the Temple Beth Ami Nursery School Staff, Teddy Bears Class, Loretta Blue and Family, Deena and Benjamin Klopman, the Yarvin and Asman Families, Laurie Galfond, Leslie Becker, Beverly Kragen, Michelle and Warren Beinart, Beverly Kragen

LESLIE STERLING, daughter of Susan and Scott Sterling, on her graduation from Washington University at St. Louis by the Temple Beth Ami Nursery School Staff

### **ONEG FUND**

In honor of:

Stephanie and Robert Oshinsky in honor of Jacob becoming a Bar Mitzvah

Liz and David Kossoff in honor of Amanda becoming a Bat Mitzvah

Leslie and Michael Press in honor of Madeleine becoming a Bat Mitzvah

In memory of:

Debra and March Shepard in memory of Alice Princenthal and Elliott Shepard

Marilyn Bier in memory of Lucille Dove

Susie, Fred, Matt and Chili Kleiman in memory of Dr. Bert Kleiman

Moir and Josh Carin in memory of Lucas Geronimo

Ann Joseloff in memory of Hugh Joseloff

Ellen and Jon Bortz in memory of Ira Edelson

Laurie and Henry Friedman in memory of

Sadie May Pariser and Meyer Pariser

Nancy and Mickey Greenblatt in memory of

Marian Greenblatt and David Greenblatt

Mimi and Zachary Roth in memory of Milton Roth

Anita Berns in memory of Esther Podolsky  
 Lauren Bogart and family in memory of Paul Bogart  
 Debbie and Terry Korth in memory of Marilyn Stone  
 Angela and Walter Harris in memory of Harry Harris  
 Elaine and Fred Gillespie in memory of Myron Gillespie  
 Jackie and Michael Manis in memory of Yale Silverman  
 Roberta and Eric Schneider in memory of Ruth Schneider  
 Adele and Sandra Narva and Stephanie Dennis in memory of Marshall Narva  
 Sharyn and Stuart Horwitz and family in memory of Laura Horwitz and Meyer Saperstein  
 Lynn and Edward Goodman in memory of Thelma Shapiro  
 Cynthia and Bernard Silverstein in memory of Yetta Geier and Mae Silverstein  
 Betty and Tom Loggia in memory of Anna Loggia  
 Robin and Tom Temin in memory of Janice Goober and Samuel Temin  
 Bernice and William Samuels in memory of Lorraine Ruth Samuels  
 Joan and Brian Ochs in memory of Evelyn Ochs  
 Deborah Cohen and Keith Goodman in memory of Sidney Goodman and Harold Kaplan  
 Glenna and Donald Frost in memory of Max Frost  
 Judy and Mitchell Glassman in memory of Helen Hipsh  
 Dottie Shermet and Glaiston Chen in memory of Josephine Burman  
 Jeanne and David Kahn in memory of Bennett Sukonick  
 Janet and Mark Wallace in memory of Jackson H. Honeycutt  
 Madeline and Steven D'Alessio in memory of

Reba Feinstein  
 Holly and Ron Lobel in memory of Aaron Sher

### **PRAYERBOOK FUND**

Donation by The Women of Temple Beth Ami

### **RABBIS' DISCRETIONARY FUND (RABBI LUXEMBURG)**

In honor of:  
 RABBI LUXEMBURG officiating at the wedding of Michael and Leigh, by Ben and Deena Klopman

### **RABBIS' DISCRETIONARY FUND (RABBI POKRAS)**

In honor of:  
 VANESSA RUBIN becoming a Bat Mitzvah by Adam and Lauren Rubin  
 The birth of ROCCO LEE ALBANESE, grandson of Mark and Janet Wallace, by Mark and Janet Wallace  
 RABBI POKRAS for helping us make our new home truly ours by Adam and Alisa Weinstein  
 RABBI POKRAS for all his guidance and support in preparing Jacob Oshinsky to become a Bar Mitzvah, by Stephanie and Robert Oshinsky

In memory of:  
 BOB DAVIS, father of Ellen Davis, by Ellen Davis  
 RUTH GROSS, mother of Daniel Gross, by Daniel and Holly Gross

### **RABBIS' DISCRETIONARY FUND (RABBI WEISS)**

In honor of:  
 RABBI WEISS for all her guidance and support in preparing Jacob Oshinsky to become a Bar Mitzvah, by Stephanie and Robert Oshinsky  
 LOIS FISHMAN'S special birthday, by Mark and Janet Wallace

In appreciation of:  
 RABBI WEISS for conducting unveiling services for Lois Schwartz by Jim Schwartz  
 RABBI WEISS for leading the memorial service for Harriet Sturm by Arthur Sturm  
 RABBI WEISS for officiating at our vow renewal by Moira and Josh Carin

In memory of:  
 BERNARD ROSENBERG, father of David Rosenberg, by Margo and David Rosenberg

### **REFORM JUDAISM IN ISRAEL FUND**

In memory of:  
 POLLY ETKIND HOCHBERG, sister of Barbara Etkind, by Marc and Debra Shepard

### **SUSTAINING (GENERAL) ENDOWMENT FUND**

In memory of:  
 GARY TEPPER, husband of Judy Fox-Tepper, by Steven and Madeline D'Alessio

### **TBA CARES FUND**

In memory of:  
 BOB DAVIS, father of Ellen Davis, by Ellen Davis and family  
 CLARE GOODMAN by Keith Goodman and Deborah Cohen

### **TIKKUN OLAM (COMMUNITY SERVICE) FUND**

In honor of:  
 CATHERINE COPP on her birthday by Edward and Elinor Sondik  
 The birth of ZOE PERRY WEYL, granddaughter of Lynn and Buzz Karpay, by Sherri and Jim Lieberman

In memory of:  
 FRED T. WHITMAN, father of Jeanne Kahn, by Catherine Copp



YALE SILVERMAN, brother of Jackie Manis, on his yahrzeit by Catherine Copp  
GARY TEPPER, husband of Judy Fox-Tepper, by Jeanne and David Kahn  
KENNETH WINTER, father of Gary Winter, by Jeanne and David Kahn  
DAVID FIRESTONE, father of Michael Firestone, by Jeanne and David Kahn

### TIKKUN OLAM REFUGEE FUND

Wishing STU ROBINSON, a speedy and complete recovery by Gail Roe  
Donation by Ronald and Holly Lobel

### WTBA

In memory of:  
PAULA ROSENBLUM, mother-in-law of Jody Rosenblum, by Jeanne and David Kahn  
MARTIN FINE, father of Dori Stehlin, by Jeanne and David Kahn  
HAROLD BREUER, father of Nora Soroka, by Jeanne and David Kahn

### Yahrzeit Fund

In memory of:  
MEYER H. PARISER, grandfather of Laurie Friedman, on his yahrzeit by Henry and Laurie Friedman  
BETTY R. SLYN, grandmother, on her yahrzeit by Suzy Slyn Davis and Family  
IRWIN WEINSTEIN, brother and brother-in-law of Don and Livia Weinstein, by Don and Livia Weinstein

### YOUTH FUND

In memory of:  
ANNETTE COHEN, mother of Lisa Goodman, by Jonathan and Ellen Bortz  
HARRIET STURM, wife of Arthur Sturm, by Lynda S. Weinstein, Barry and Ruth Ploff, Eleni M. Paras

\*\* as of May 25, 2018

*"May the memory of these  
Righteous  
be for a blessing"*

We mourn the recent death of:

Dan Zwick  
step-father of Eric Meyers

Millie Annie Bahn  
grandmother of Lisa Kaplan

David Kahle  
brother-in-law of Tina Bridge

Murray Stein  
husband of Carol Stein

Ruth Sylvia Gross  
mother of Daniel Gross

Rabbi Aaron D. Panken  
President of Hebrew Union College

Gary Tepper  
husband of Judy Fox Tepper, father of Alexander Tepper,  
Rachel Tepper Paley, son of Beatrice Tepper

### SHARE WITH US...

We want to know. Please let us know of any significant life cycle event in your family (or the family of a member friend or neighbor), such as a birth, engagement, wedding, illness or death so we can be in touch. Please contact Gail Brodsky, Clergy Assistant, at 301-340-6818 or [gsb@bethami.org](mailto:gsb@bethami.org)

## ONGOING Information



Excerpt – Roland B. Gittelsohn

**No one has to do it alone.**



**Garden of Remembrance**

GAN ZIKARON MEMORIAL PARK

17 YEARS OF CARING SERVICE AND DEDICATED SUPPORT TO  
THE JEWISH COMMUNITY OF GREATER WASHINGTON

Call Janice Rosenblatt at Temple Beth Ami, (301) 340-6818,  
or visit [www.gardenofremembrance.org](http://www.gardenofremembrance.org)

Partner Agency of  
The Jewish Federation  
OF GREATER WASHINGTON



## CELEBRATING? Remember MAZON

Our Congregation is a MAZON congregation which means that we contribute 3% of every event in which food is served to MAZON: A Jewish Response to Hunger (also \$3 of every Oneg contribution). We ask every member of the congregation to do the same.

**BAR/BAT MITZVAH...**contributing to Mazon brings food and help to the hungry, while it gives your child the opportunity to begin his/her Jewish adult life with a public act of Tzedakah.

**WEDDING...**traditionally it is the obligation of the bride and groom to feed the hungry and help the poor. By contributing 3% of the cost of your wedding celebration to MAZON, you can continue these Jewish traditions.

## JSSA Liaison is Here for You

Through our special relationship with JSSA, TBA members are able to receive free and confidential consultation on family and mental health issues including parenting children of all ages and aging parents. Roberta Drucker is a Licensed Clinical Social Worker and also earned a BA in Psychology, and Early Childhood, Elementary and Special Education. Her specialized training and experience include the treatment of anxiety, OCD, and other mood issues, ADHD, learning disabilities, families with special needs, parenting, couples and family therapy, aging and bereavement, and intergenerational family therapy. During her tenure as Director of JSSA's Resettlement Program, she provided services to families, and consultation to staff in a variety of settings, including Jewish Day Schools, public schools, pre-schools, and religious schools. Please contact Roberta at [rdrucker@jssa.org](mailto:rdrucker@jssa.org) or 301-610-8369 for free confidential consultation.

## GREAT NEWS!!! YOU CAN SHOP AT AMAZON AND SUPPORT TEMPLE BETH AMI AT THE SAME TIME!

Do you shop on the Amazon.com website? Do you know that if you enter the Amazon website from a link on the Temple Beth Ami website, TBA will earn at least 4% of your purchase price for every purchase you make? It is very easy and you will be helping TBA. You can access the Amazon site to earn money for TBA in one of two ways: Either go to the TBA website and click on the small Amazon.com link at the top of the home page, or use this URL which takes you directly to Amazon: <http://tinyurl.com/bethamishop>. BUT REMEMBER, TBA ONLY EARNS MONEY IF YOU GO TO AMAZON THROUGH THE TBA WEBSITE OR THIS URL!

Just imagine, you can "shop 'til you drop" without leaving home and put some badly needed cash in TBA coffers.  
GO TO IT!

## Concerned about your teen's depression?

### NIH TEEN DEPRESSION STUDY:

Enrolling ages 11-17 to find causes and treatments.  
Initial evaluation, then several outpatient visits/year.  
If eligible, treatment (inpatient or outpatient).

**CALL 1-301-496-8381**  
**[TTY: 1-866-411-1010]**

**or** email [depressedkids@mail.nih.gov](mailto:depressedkids@mail.nih.gov),  
**or** [www.nimh.nih.gov/TeenDepressionStudy](http://www.nimh.nih.gov/TeenDepressionStudy)



Study # 18-M-0037.

## FAMILY & COSMETIC DENTISTRY

Our office is committed to providing personalized, quality care in a relaxed and friendly atmosphere.



We welcome new patients to our practice.

**Andrew J. Sorkin, D.M.D., L.L.C.**

**Mark A. Wallace, D.D.S.**

**301-309-0707**

**1901 Research Blvd., Suite 200**  
**Rockville, MD 20850**

Please visit us on the web at [www.wallacesorkin.com](http://www.wallacesorkin.com)



Apparel	Logo Design
Catering & Barware	Programs
Cocktail Napkins	Save the Dates
Custom Stamps	Sign In Boards
Dance Floor Decals	Snapchat Geo Filters
Event Planning	Step & Repeats
Escort Cards	Stickers
Favors & Favor Tags	Table Numbers

**202.302.2001 | [info@iSparkleEvents.com](mailto:info@iSparkleEvents.com)**



**Don't Suffer with Foot or  
Ankle Pain!**

**Podiatrists • Foot & Ankle Surgeons**



Yenisey Yanes, DPM  
Coralia Terol, DPM  
Isaac Neequaye, DPM



Best Podiatric Practice



Best Orthopedic Surgery  
Practice

Brenna Steinberg, DPM  
Nikki Ho, DPM  
Sradha Lamichhane, DPM

**(301) 668-9707 • [www.mynewfeet.com](http://www.mynewfeet.com)**

**Offices in Frederick and Urbana**





## Capitol Orthodontics

As a Board Certified orthodontist, Dr. Andrew L. Schwartz utilizes the latest technology including self-ligating and ceramic braces, as well as Invisalign® to straighten his patient's teeth. Dr. Schwartz has been designated an Invisalign Premier Elite Provider by Invisalign®, an honor given only to the top 1% of Invisalign® providers.



invisalign®



Rockville Office  
14955 Shady Grove Road #200  
Rockville, MD 20850  
(301) 610-9909

Washington, DC Office  
1800 K Street, NW #1100  
Washington, DC 20006  
(202) 785-4746

[WWW.CAPITOLORTHODONTICS.COM](http://WWW.CAPITOLORTHODONTICS.COM)



Dr. Andrew L. Schwartz  
is your orthodontic specialist,  
offering Invisalign and braces for  
children, teens, and adults.

ADVERTISE **YOUR BUSINESS** HERE

*Your Community is Looking!*

Call LPi for advertising info  
(800) 477-4574



UPGRADE TO A

**VIBRANT**  
Contact us for details *ad*

**800-477-4574**

**Do you know . . .**

**. . . that this publication is produced at no cost to your organization?** The cost of assembling, printing and delivery is carried by the advertisers which appear on these pages. By paying for advertising space, these businesses help your organization communicate with its members. When you patronize these businesses, it proves that advertising in your publication is a good investment which brings a return. Please mention that you saw the company's ad in this publication—solid evidence which encourages advertisers to continue their support!



**LITURGICAL  
PUBLICATIONS**

## Montages and Custom Logos!



15% back to TBA

Leslie Katz  
301-873-7123  
lesliekatz1@msn.com  
KatzandDogDesign.com

Web Design  
Newsletters  
Business Cards  
Brochures



# SILCO

E L E C T R I C

## 301.466.1128

### [www.silcoelectric.com](http://www.silcoelectric.com)

[adam@silcoelectric.com](mailto:adam@silcoelectric.com)

Serving DC, MD, and VA

*"Your last impression is my first priority"*

## Celebrate Your Milestone Event

Create a Unique Bar/Bat Mitzvah at VisArts



The modern and versatile **Buchanan Room** is our main event space overlooking Rockville Town Square.

•**Size:** 2,500 square feet (52'x56') with floor-to-ceiling windows on two full walls

•**Capacity:** 225 standing reception; 200 seated dinner without dance floor; 170 seated dinner with dance floor

Our **Artist Concourse** art studios and gallery exhibitions welcome guests to your celebration with original art.

**VisArts Rooftop Terrace**, with its majestic aerial view of downtown Rockville, provides a unique perspective for your photo opportunities.

By celebrating in style at VisArts, you are supporting the arts while raising the roof! Twenty percent (20%) of your rental fee is tax-deductible.

**visarts** [www.visartscenter.org](http://www.visartscenter.org)

155 Gibbs Street • Rockville, MD 20850

For more information, contact Mary Liniger, Events and Sales Director, 301-315-8200 x124 [mliniger@visartscenter](mailto:mliniger@visartscenter)

Mention "Mitzvah Beth Ami" to receive your event discount!

## AVAILABLE

## FOR A LIMITED TIME

# ADVERTISE YOUR BUSINESS HERE

Contact **Kathy Buck** to place an ad today!  
[kbuck@4LPi.com](mailto:kbuck@4LPi.com) or (800) 477-4574 x6346



# SPREAD THE WORD

A Thriving, Vibrant  
Community Matters



**SUPPORT OUR  
ADVERTISERS**

## Fishman Financial Services

*"Taking the Stress Out of Planning for Your Retirement"*

- Comprehensive Financial Planning
- Intergenerational Planning
- Tax Planning
- Tax Preparation

**301-330-9455**

**Free No-Obligation Consultation**

**Lois@fishmanfinancial.com**

**Please visit: [www.fishmanfinancial.com](http://www.fishmanfinancial.com)**

Securities offered through H. Beck, Inc.,  
a Registered Broker Dealer

Member FINRA/SIPC  
Bethesda, Maryland, 20817

Investment Advisory and Tax Preparation Services  
are available through Fishman Financial Services

Lois Fishman, CFP® is a Registered  
Representative with H. Beck, Inc.  
which is not affiliated with  
Fishman Financial Services



**Lois Fishman, CFP®**  
Certified Financial Planner

*Love and Remembrance, Natural Beauty,  
A Tradition of Caring.*



## JUDEAN MEMORIAL GARDENS

*Traditional Jewish Burial in the Heart  
of Montgomery County, Maryland*

16225 Batchellors Forest Road, Olney, MD 20832  
301-384-1000 • [www.judeangardens.com](http://www.judeangardens.com)

"Ark" - one of 6 original art works created for Judean by Philip Ratner  
at the turn of the millennium

**Total Wine  
& MORE**

**A PROUD SUPPORTER OF  
TEMPLE BETH AMI**

Total Wine & More.  
The selection is incredible.

Total Wine & More is like no other wine store you have ever visited.  
Each of our superstores carries over 8,000 wines, 3,000 spirits\* and 2,500  
beers. That's a quarter of a million bottles in every store.

Visit one of our nearby stores:

### 2 Maryland Wine Superstores

LAUREL - CORRIDOR MARKETPLACE\*  
TOWSON - BELTWAY\*

\*Spirits available only in our MD locations.

### 8 Northern Virginia Wine Superstores

MCLEAN | ALEXANDRIA | SPRINGFIELD  
FAIRFAX | CHANTILLY | STERLING  
MANASSAS | FREDERICKSBURG

**Over 105 stores in 16 states!**



Get Social With Us  
[TotalWine.com](http://TotalWine.com)



# Your Local Assisted Living



**Bartholomew House**  
6904 River Road  
Bethesda, MD 20817  
**(301) 320-6151**



**Raphael House**  
1515 Dunster Road  
Rockville, MD 20854  
**(301) 217-9116**



**Byron House**  
9210 Kentsdale Dr  
Potomac, MD 20854  
**(301) 469-9400**

- Assistance with bathing, grooming & dressing
- Medication administration / management
- Housekeeping & laundry service
- Nutritious meals / healthy snacks
- Recreational, social & spiritual programs



## Quality Assisted Living at an Affordable Price

Victory Housing is the nonprofit housing development arm of the Archdiocese of Washington.

[www.victoryhousing.org](http://www.victoryhousing.org)



**Victory  
Housing**

## TaMORRIS

GRAPHIC DESIGN  
INTERIOR DECORATING  
LANDSCAPE DESIGN  
& MORE

## Design

### Logo Design & Corporate Identity Packages

*Make your company stand out from the crowd and look professional!*

### Custom Invitation Design and Event Materials

*Birthday Parties, Bar-Mitzvahs, Christenings, Baptisms,  
Communion, Weddings, or Holiday Parties*

### \*\*\* Holiday and New Year's Cards \*\*\*

*Make your card this year personal and unique!*

### Specialty Products

*Custom Printed T-shirts, Office Products, &  
Promotional items for your Office, Team, or other group*

### Interior Design Services

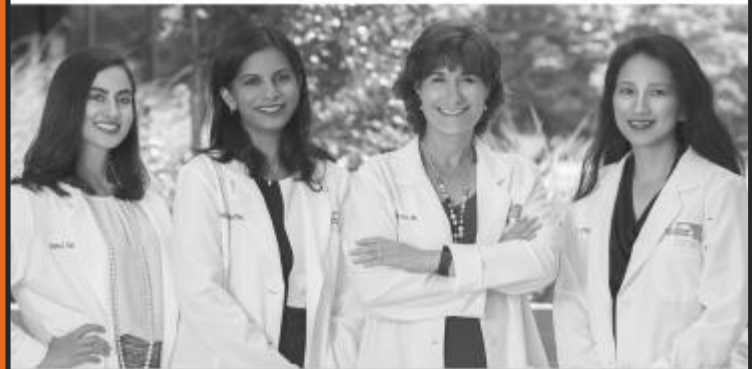
*Color Consultation, Full Decorating Services,  
Custom Window Treatments, Pillows and Upholstery*

TAMARA A. MORRIS, *Certified Interior Decorator (CID)*  
240.418.7371 • TAMORRIS.DESIGN@GMAIL.COM  
TAMORRISDESIGN.WIX.COM/TAMORRISDESIGN



**Rockville**  
301-610-2020

**Frederick**  
301-662-4545



## Board Certified Ophthalmologists

Dr. Holly M. Gross • Dr. Thu Pham  
Dr. Raha Fahimi • Dr. Padmaja Nootheti

Comprehensive Eye Care • Cataract Surgery  
Laser & Refractive Surgery • Glaucoma  
Diabetes • Dry Eyes

[www.CentralMarylandEye.com](http://www.CentralMarylandEye.com)



Everywhere You Want to Be

**LONG & FOSTER**  
REAL ESTATE  
LUXURY HOMES  
**CHRISTIE'S**  
INTERNATIONAL REAL ESTATE

Named one of the Area's Top Realtors in Washingtonian and Bethesda Magazine, and one of America's Best Real Estate Agents in the Wall Street Journal



**BEST**  
WASHINGTONIAN  
**2016**



## Margie Halem

Temple & WBTA Member

Licensed in Maryland, Virginia & Washington, D.C.

301.775.4196 c | 301.907.7600 o

Margie@LNF.com | MargieHalemGroup.com

Bethesda Gateway Office | Long & Foster Real Estate



## Capitol Orthodontics

As a Board Certified orthodontist, Dr. Andrew L. Schwartz utilizes the latest technology including self-ligating and ceramic braces, as well as Invisalign® to straighten his patient's teeth. Dr. Schwartz has been designated an Invisalign Premier Elite Provider by Invisalign®, an honor given only to the top 1% of Invisalign® providers.



Rockville Office  
14955 Shady Grove Road #200  
Rockville, MD 20850  
(301) 610-9909

Washington, DC Office  
1800 K Street, NW #1100  
Washington, DC 20006  
(202) 785-4746

Dr. Andrew L. Schwartz  
is your orthodontic specialist,  
offering Invisalign and braces for  
children, teens, and adults.

[WWW.CAPITOLORTHODONTICS.COM](http://WWW.CAPITOLORTHODONTICS.COM)

## Morgan Stanley



### Ronnie Lapinsky Sax CPM®

Senior Portfolio Management Director  
Financial Advisor

7500 Old Georgetown Rd, 10th Fl  
Bethesda, MD 20814

301-657-6368

r.lapinskysax@morganstanley.com

NMLS# 1275710

© 2016 Morgan Stanley Smith Barney LLC.  
Member SIPC. CRCT586709

## Monuments & Memorials

Division of Sagel Bloomfield

**\$100**

GIVE YOUR FAMILY THE  
GIFT OF PEACE OF MIND  
towards a pre-paid arrangement or  
memorial. Bring into your appointment.

Sagel Bloomfield is owned and operated  
by Al Bloomfield & Ed Sagel



Ask us about  
special funeral  
plans available for  
Temple Beth Ami  
members only.

**SAGEL  
BLOOMFIELD  
DANZANSKY GOLDBERG  
FUNERAL CARE INC**

VISIT OUR NEWLY REMODELED OFFICE –  
1091 ROCKVILLE PIKE, ROCKVILLE, MD 20852  
OR ONLINE [WWW.SAGELBLOOMFIELD.COM](http://WWW.SAGELBLOOMFIELD.COM)



AL AND HIS FAMILY  
ARE PROUD MEMBERS  
OF TEMPLE BETH AMI

FOLLOW US ON FACEBOOK SAGELBLOOMFIELD FUNERALS

**301.340.1400**



# Chadashot

Temple Beth Ami  
14330 Travilah Road  
Rockville, Maryland  
20850-3527

NON PROFIT ORG.  
U.S. POSTAGE  
PAID  
SUBURBAN MD 20898  
PERMIT 761

RETURN SERVICE REQUESTED

JULY/AUGUST 2018 TAMMUZ/AV/ELUL 5778

## TEMPLE BETH AMI Chadashot

### TEMPLE STAFF

SENIOR RABBI	GARY POKRAS
RABBI	BAHT YAMEEM WEISS
CANTOR	LARRY ESCHLER
CANTORIAL SOLOIST	JOSHANA ERENBERG
DIRECTOR OF EDUCATION	KIM ROBERTS
NURSERY SCHOOL DIRECTOR	PAULA SAYAG
EXECUTIVE DIRECTOR	JANICE ROSENBLATT
PROGRAM DIRECTOR	SHELLY LENKIN GORDON
RABBI EMERITUS	JACK LUXEMBURG
CANTOR EMERITAS	SUE ROEMER z"l
DIRECTOR OF EDUCATION EMERITAS	PHYLLIS GREENE
NURSERY SCHOOL DIRECTOR EMERITAS	KAREN GREENBERG
TEMPLE ADMINISTRATOR/EDITOR	DIANE FERRARO
TEMPLE ADMINISTRATIVE ASSISTANT	IRENE PAPAMANOLIS
ACCOUNTING	JOANNE DIAMOND
ACCOUNTING	ESTHER ABELSON
CLERGY ASSISTANT	SUSAN NEUMANN
CLERGY ASSISTANT	GAIL BRODSKY
TBA HIGH SUPERVISOR, GRADES 8 -12	LORI FEIN
L'MALA SUPERVISOR, GRADES 3 - 7	LISA GOODMAN
CURRICULUM SPECIALIST K-12	SHARON TASH
L'MALA SUPERVISOR K - 2	LORI FEIN
L'MATA SUPERVISOR GRADES 3 -6/KAYITZ	ELAINE PRIGAL
REL. SCH. OFFICE MANAGER/REGISTRAR	BOBBIE CHAIT
NURSERY SCHOOL ADMINISTRATIVE ASST.	JILL FINCI
NURSERY SCHOOL SPECIAL PROJECTS COORDINATOR	ELLEN BORTZ

### BOARD OF DIRECTORS

PRESIDENT	BUZZ KARPAY
1ST VICE PRESIDENT	ROBERT OSHINSKY
2ND VICE PRESIDENT	LAUREN BOGART
3RD VICE PRESIDENT	MICHAEL MARYN
TREASURER	KAL MIGLER
ASSISTANT TREASURER	MADELINE D'ALESSIO
FINANCIAL SECRETARY	CAROL MARTIN
ASSISTANT FINANCIAL SECRETARY	BURT FELDMAN
RECORDING SECRETARY	TAMMY ROBERTS
GENERAL COUNSEL	DAN ROSENSTEIN
IMMEDIATE PAST PRESIDENT	LAURA ROSE
PAST PRESIDENT	TOM TEMIN
WOMEN OF TBA REPRESENTATIVE	JUDY GOOZH
BROTHERHOOD PRESIDENT	
MEMBERS-AT-LARGE:	
MATT BARON, AARON CHUSID, STACY DERRICK, BETH GELFMAN, MICHAEL MANIS, JENNIFER WINICK MILLER., MATT ROSENSTOCK, NANCY SHAPIRO RON WEINSTEIN, JONATHAN WESTIN	

### Judi Goozh Selected as Volunteer of the Year



At Beth Ami we are blessed to have many outstanding congregants who volunteer hundreds of hours throughout the year. Each year we acknowledge one volunteer who goes above and beyond in her/his time, commitment and dedication to the Temple and the greater community. This year the Board of Directors has selected Judi Goozh to receive this honor.

Judi has worked tirelessly on the Tikkun Olam Committee, helping to start and grow the Temple's work with South Lake Elementary School. She chairs the Temple's Inclusion Committee, which has developed the Temple's allergy free policies, worked to create sensory friendly spaces at temple services and events, and assists with Jewish Disabilities Awareness Month and Shabbat Services. She has done significant work with TBANS as part of the URJ's Early Childhood's COP. She has been a member of the Temple Board, currently represents WTBA on the Board, and she sits on the North American Board of URJ.

Please join us in thanking and congratulating Judi.

Temple Beth Ami is a caring, inclusive congregational community united by Torah, guided by the philosophy of reform Judaism and committed to the Jewish people. We provide the foundation and resources to our congregants to engage in life-long Jewish learning, the pursuit of spiritual growth and the promotion of social justice for all.