

**SCHEDULE OF SERVICES**

**Friday, November 3**

6:30 pm Erev Shabbat of Song and Story

**Saturday, November 4**

10:30 am Shabbat Service  
B'nai Mitzvah: Joseph Bloomfield  
Carly Schaechter

5:30 pm Shabbat Service  
B'nai Mitzvah: Samantha Blaine  
Jonah Karp

**Friday, November 10**

6:30 pm Tot Shabbat  
7:30 pm Erev Shabbat Service

**Saturday, November 11**  
10:30 am Shabbat Service  
B'not Mitzvah: Gabriella Lizondo  
Julia Lvovsky

10:30 am Shabbat Chapel Service

**Friday, November 17**

6:30 pm Spirit of Shabbat

**Saturday, November 18**  
10:30 am Shabbat Service  
Bar Mitzvah: Zachary Edenbaum  
5:30 pm Shabbat Service  
B'nai Mitzvah: Elizabeth Gelman  
Jake Gluck

**Friday, November 24**  
7:30 pm Erev Shabbat Service

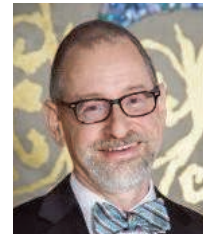
**Saturday, November 25**  
10:30 am Shabbat Service  
Bat Mitzvah: Madeline Kaplan

**Friday, December 1**  
6:30 pm Erev Shabbat of Song and Story - Grade 3 Siddur Service

**Saturday, December 2**  
10:30 am Shabbat Service

CONTINUED ON PAGE 6

**MESSAGE FROM**  
*Rabbi Pokras*



**TWO GREAT OPPORTUNITIES THIS NOVEMBER**

Dear Friends,

We are now in the Hebrew month of Cheshvan, called Mar Cheshvan by the rabbis. Mar is the Hebrew word for “bitter,” and the rabbis called this month bitter because it is the only month in the Hebrew calendar with no Jewish holidays – and, therefore, nothing special to celebrate (apart from Shabbat of course). A month without holidays is indeed a little sad, although as a rabbi in today’s hectic world, I have come to appreciate the break following the High Holy Days and Sukkot.

At least in theory.

Here at Beth Ami, we don’t slow down for Cheshvan, we pick up the pace! It’s going to be a sweet November, and I would like to highlight two programs which are part of the reason why.

Beth Ami Israel Trip Organizational Meeting with our Israeli Tour Company and Guide (for our June 19-29, 2018 trip) - Sunday, November 5, 11am.

Yup, that’s right. Our tour company, S.Y. Travel, is coming all the way from Israel to meet

CONTINUED ON PAGE 19

**SNOW BIRDS**

If you are now – or will soon be – at your winter address, please let the office know so we can find you and keep you informed about your Temple. Bulk mail isn’t forwarded but it is returned at the expense of the Temple. Let Diane know of your address change at

[idf@bethami.org](mailto:idf@bethami.org)

And, please, remember to let us know when you return home.

**TABLE OF CONTENTS**

**President's Message** 2  
**Bima Table Story** 3  
**This Month** 4 - 5  
**Tikkun Olam** 6  
**Jews of Malmo Sweden** 7  
**Brotherhood** 8  
**Women of TBA** 9  
**TBANS** 10 and 16  
**B'nai Mitzvah Profiles** 11  
**Machane TBA** 12 - 13  
**Simchas** 14  
**Photo Review** 15  
**Committees** 17  
**Coming in December** 18  
**Ongoing** 21  
**Sunshine** 22 - 25  
**Advertising** 26 - 31

**MESSAGE FROM**  
*Laura EJ Rose, President*



**“YOU WILL NEVER FIGURE OUT HOW UNTIL YOU ARE CLEAR ON WHY,”**  
 ~ SIMON SINEK

By starting with a why that truly matters to congregants and prospective congregants, and is deeply rooted in our heritage as Reform Jews, today's congregations can put themselves on a path to strength and success. Our Congregation needs to take a new, innovative approach to why in order to ensure that our community thrives now and for the next generations. It is time for Temple Beth Ami to take serious stock of our future – our values, purposes, programs and models of affiliation and revenue.

After careful and exhaustive deliberation, the Board has retained Beth Michaels of Primer Michaels to guide us through this strategic planning process. Beth brings an extensive 30 years of experience to this work. Since the 1990's, Premier Michaels has supported a number of Jewish leadership teams and their institutions, including synagogues around the country, Chicago's Urban Council on Jewish Affairs, The ARK (social services for at-risk Jews and their families) and our regional office of the URJ.

Under Beth's guidance, our Board of Directors in conjunction with the clergy, lay leadership and volunteers of the Vision 2020 Committee, are launching this effort with collaborative congregational engagement opportunities so that your voices design our vision of

the future. Together we will address our most important questions related to the future vibrancy and sustainability of TBA, such as:

- What are the core values that unite us as a community?
- What is our unique and compelling reason for being?
- What are the measures of success that our clergy, board and staff should use to answer the question “how are we doing relative to how we should be doing, according to our congregation's values, needs and interests?”
- What's next for our leadership priorities, to secure our temple from generation to generation?
- How much should we take on, for how much cost, in what timeframe?
- In what ways will we stay in touch with our congregation about our progress and our changing interests?

From October through 2018, we invite you to voice your perspective in a number of ways: completing a congregational survey, attending a congregational town hall, hosting or attending a house meeting this winter. The Vision 2020 Committee's work can only be as good as your input. We will be asking for congregants to share their passions, concerns, and innovative ideas for virtually all areas of congregational life:

- Jewish Adult Education
- Sacred Support: Prayer / Ritual / Event Principles & Guidelines
- Tikkun Olam Opportunities / Principles & Guidelines
- Membership Dues / Principles &

**CONTINUED ON PAGE 17**

**Chadashot**

Published monthly by  
 TEMPLE BETH AMI  
 MEMBER  
 UNION FOR REFORM JUDAISM  
 14330 TRAVILAH ROAD  
 ROCKVILLE, MARYLAND 20850-3527

TEMPLE OFFICE 301.340.6818  
 FAX 301.738.0094

[www.bethami.org](http://www.bethami.org)

HOURS:  
 MON-THURS 9:00 AM - 6:00 PM  
 FRI 9:00 AM - 3:00 PM  
 SAT CLOSED  
 SUN CLOSED

RELIGIOUS SCHOOL 301.340.8335  
 FAX 301.610.6239  
 NURSERY SCHOOL 301.762.5594  
 FAX 301.610.5827  
 BROADCAST SYSTEM 301.309.3834  
 LIVE STREAMING [WWW.BETHAMI.ORG](http://WWW.BETHAMI.ORG)

## HISTORY OF THE NEW BIMA TABLE

The black walnut tree the reading table is made from grew in Chevy Chase for approximately 150 years; the tree's demise was facilitated by the DC Derecho of 2012. The pictures provide a sense of the size and proportion of this magnificent tree. The table was cut from the middle of the main trunk. The beautiful table was designed and hand-crafted by Shaun O'Connor.



**COMING**  
*This Month*



**Live & Learn with Sharon Tash**

**Tuesdays, November 7, 14, 21**

**10:30 am – 12 pm**

All are invited to our popular adult daytime learning series; all are welcome. Topic Jewish Identity in America & Beyond.



**Food Film Fest**

**Friday, November 17**

**7:30 pm**

Following our Wine & Cheese Pre-neg and “Spirit of Shabbat” services, please make plans to join us for a delicious Shabbat dinner and dessert, followed by a screening of “Raise the Roof,” an uplifting film which captures the journey of Rick & Laura Brown as they reconstruct the elaborate roof and painted ceiling of the Gwozdiec synagogue, an 18th century structure that rivals the greatest wooden architecture in history. Register online by 11/14 and don’t miss this delicious, engaging and educational evening! See flyer (online and in lobby) for details.



**Theatre Trip to Arena Stage**

**Sunday, November 19**

**2 pm matinee**

Join us for an in-town theatre trip, beginning with an on-bus lecture by Steve Friedman (our Broadway Buzz instructor), prix fixe lunch at Richard’s Place at Arena Stage and a matinee of “The Pajama Game.” Register online; space is limited. Bus departs from the Temple at 11:45 am; returns after the show (5 pm-ish). \$130 (Temple member); \$145 (guest).



**Broadway Buzz with Steve Friedman**

**Monday, November 20**

**10:30 – 12 pm**

You won’t want to miss this popular monthly Monday morning dose of Broadway with guest lecturer, Steve Friedman. Topic: Even More Broadway Divas. All are welcome! Members can enjoy Steve’s monthly lectures at no cost; friends, guests and non-members will be charged \$5 per class at the door (cash and check ONLY).



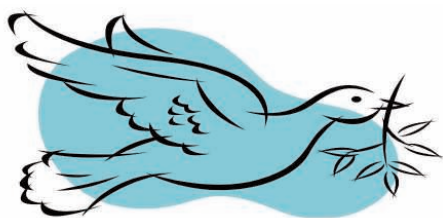
**The Temple offices will be closed Thursday and Friday, November 23 and 24 for Thanksgiving**

**WHEN YOU NEED HELP AFTER HOURS.**

The 24/7 emergency number is available for Temple emergencies. After regular business hours, please call 301-332-3566 or you can call the office (301-340-6818) and follow the prompts to the emergency number. The clergy and the executive director are always available to help you.


**Interactive Workshops with Jules Alvorado    Tuesday, November 28    9:45 am and 6 pm**

These workshops are a follow-up to Rabbi Pokras' Rosh Hashanah sermon. Entitled "From Chaotic to Calm: Transforming Family Relationships," these workshops are focused on parenting and supporting our children as they find their way, even when that way gets tough. Alvorado offers an inspirational message on healing in relationships for parents and other adults who care for children (and grandchildren). Through this workshop, she will help deepen participants' understanding of effective parenting during troubled times, offer practical parenting responses to difficult behaviors and intensify the healing within your family. Jules Alvorado is an internationally recognized healing expert in the area of trauma, attachment, relationship and organizational process and is the author of a recently published book, *The Quest for Peace in a Broken World*. There is no charge to attend, but please RSVP (specifying which workshop) to [SLG@bethami.org](mailto:SLG@bethami.org) by 11/26.



## Annual High Holy Day Appeal

Please help us reach our goal of 100% participation as we strive to reach \$100,000.

Please use the envelope you received, send a check, or go on line to [www.bethami.org/donate](http://www.bethami.org/donate). Click on Annual (High Holy Days) Appeal.

Thank you.

With your help we can make it.

## WTBA OFFERS CAMP SCHOLARSHIPS

For the summer of 2018, Women of TBA will be offering a limited number of scholarships for children to attend summer camp programs at either Temple Beth Ami or a camp affiliated with the Union of Reform Judaism (URJ). Please contact Jeanne Kahn ([JeanneKahn@aol.com](mailto:JeanneKahn@aol.com)) for an application and/or more information.



## WTBA JUDAICA SHOP

Chanukah is just around the corner! DECEMBER 12th Are you ready? The Judaica Shop is. Stop in and find menorah, dreidels, gelt and gifts for all ages. The shop is open Tuesday, Wednesday, and Thursday from 9:30 am to 1:30 pm and religious school Sundays from 8:45 am to 12:45 pm.

For your shopping convenience, we will set up shop in the lobby on Sunday, December 3rd and 10th.

**JANUARY CHADASHOT  
DEADLINE NOVEMBER 22**

## TIKKUN OLAM

### Community Service Projects



#### LEND A HAND

Temple Beth Ami Community Service Projects

Thank you in advance for your support! (For information on additional TBA community service projects, visit

[bethami.org/groups/TO.](http://bethami.org/groups/TO.))

#### VOLUNTEERS NEEDED

- **Thanksgiving Help Needed** - Food/monetary donations and set-up/serving help needed before Thanksgiving and on Thursday, November 23, for Thanksgiving Dinner at the Children's Inn. Please sign up on the ChaverWeb site at [bethami.org](http://bethami.org) for donations, driving help, or serving/clean up on Thanksgiving Day. Questions? Contact Gail Kaplan-Wassell at [gail.kaplanwassell@gmail.com](mailto:gail.kaplanwassell@gmail.com).
- **Community Ministries of Rockville (CMR)** - Child care providers and tutors needed Tuesday/Thursday nights for the Language Outreach Program. SSL hours available. For more information on this and other volunteer opportunities, contact Andrea Kempner-Wink at [andreakwink@cmrocks.org](mailto:andreakwink@cmrocks.org).

#### COLLECTIONS

##### THANK YOU FOR SUPPORTING THESE DRIVES!

- **Thanksgiving Food Drive for Nourish Now, November 1 – 17** - Donate canned (yams, carrots, pie filling, chicken broth, green beans, gravy & cranberry sauce) and boxed/bagged (instant mashed potatoes, dried stuffing mix, & muffin mix) foods for clients of Nourish Now, which hopes to serve 5,000 people this Thanksgiving. Collection boxes in the Temple lobby November 1–17.
- **Adopt-a-Family Holiday Gift Drive** - In this project, families affiliated with Montgomery County Child Welfare Services provide a list of holiday gift wants/needs and are matched up with a TBA family to provide the gifts of their choosing. This year, we will also provide gifts for the Columbian refugee family that TBA is assisting. The lists will be available in late November, and the gifts will be due before Christmas. For more information or to sign up, please email Judi Goozh at [paul-judig@verizon.net](mailto:paul-judig@verizon.net) or Robin Temin at [robin.temin@verizon.net](mailto:robin.temin@verizon.net).

- **Annual Unwrapped Holiday Toy Drive** - Help make the holiday season brighter for children of South Lake ES by bringing new, unwrapped children's toys/games for ages 9–11. (South Lake has asked us to concentrate this year's collection on gifts for the school's "older" students.) Collection boxes will be in the Temple lobby from December 1–15.
- **Keep Those Box Tops for Education (BTE) Labels Coming!** - Thanks to your efforts, TBA has donated more than 1,500 labels of these small, bright pink labels to local needy schools thus far. South Lake ES in Gaithersburg received most of them. Help us continue our efforts to help needy schools turn these labels into cash for needed items and supplies. Bring your labels to the collection boxes in the Temple lobby, Religious School office, and Nursery School office. Have a question? Contact Bernard Silverstein at [cynbern@verizon.net](mailto:cynbern@verizon.net). (Also, please trim the labels as closely as possible to the outline of the label itself.)

#### IN THE COMMUNITY

- Help CMR Distribute Thanksgiving Baskets on Sunday, November 19 - Volunteers needed to hand out food baskets at CMR's Rockville office or to deliver baskets to seniors & families with no transportation. For more information or to volunteer, contact Andrea Kempner-Wink at [andreakwink@cmrocks.org](mailto:andreakwink@cmrocks.org)

#### SCHEDULE OF SERVICES CONTINUED FROM PAGE 1

Bat Mitzvah: Danielle Land  
5:30 pm Shabbat Service  
Bar Mitzvah: Ethan Rosenberg

**Sunday Minyan, 10:45 am**

Visit us at  
[www.bethami.org](http://www.bethami.org)

## A VISIT TO THE JEWS OF MALMO, SWEDEN

### *Hilde and Colin Alter*



After thinking about the Jewish community of Malmo, Sweden and how to describe it to my friends, the first thought that came to my mind was the opening lines of the musical *A Fiddler on the Roof*. The lead character, Tevye, says:

*"A Fiddler on the Roof. Sounds crazy, no? But in our little village of Anatevka, every one of us is a fiddler on the roof trying to scratch out a pleasant, simple tune without breaking his neck. It isn't easy. You may ask, why do we stay here if it's so dangerous? We stay because Anatevka is our home. And how do we keep our balance? That I can tell you in one word: Tradition!"*

The Jews of Malmo survive! But perhaps not as well as they did a mere decade ago.

Several months ago, as part of a planned trip to Copenhagen, we decided to cross the bridge into Malmo, Sweden, using the local commuter railroad. We contacted the local synagogue to obtain permission to visit. Without thinking much about it, we also volunteered to bring them any Judaica they might need. Their new congregation lacked prayer books. They asked if it would be possible to obtain a few Gates of Prayer, the Reform prayer book, as well as any old copies of Sim Shalom, the Conservative prayer book. I contacted our executive director and B'nai Shalom of Olney; both congregations graciously and willingly agreed to help.

The next question was the hard one – how do we get 100 pounds

of prayer books to Sweden. We learned the shipping cost was prohibitive, so we just added them to our luggage. We arrived on August 22 in Malmo and were met by Lena Rubenstein Reich, the defacto president of the Egalitarian Congregation of Malmo (ECM). We learned that she was a lifelong resident of the community that in recent years was more than 2000 families. Due to the anti-Semitism and anti-Jew violence, the community has shrunk to about 400 families. About half of these families belong to the Orthodox (or traditional) congregation. The ECM tries to appeal to the remainder. Malmo has had an active Jewish community for about 150 years.

Mrs. Reich arranged for us to meet both rabbis (the Orthodox and the ECM) where we learned more about the Jewish community and its issues. Rabbi Moshe David Hachohen leads the Orthodox community, but works closely with ECM. Rabbi Rebecca Lillian, a graduate of the Reconstructionist Rabbinical College, assists ECM. She is formally employed by the Open Skane Initiative, an interfaith organization working to address social and communal issues in Malmo and the surrounding county

Malmo is primarily a lovely industrial city, with about 110,000 Muslims, divided into 9 Sunni groups plus several Shiite communities. Many of these first, second, and third generation Muslims believe that Jews no longer belong in Malmo.

CONTINUED ON PAGE 20

## BROTHERHOOD

### News

#### Join Brotherhood Today

The Brotherhood of Beth Ami is an organization that sustains a wide range of Temple and community activities. By joining the Brotherhood, your support will help provide kiddush cups to our youth becoming B'nai Mitzvah, financial aid for Rebuilding Together, meals for the Community Based Shelter, and sponsorship of family events. Join the Brotherhood today and enjoy great entertainment while expanding your network of friends and business contacts.

Join us for our fabulous upcoming events with good friends, great food and interesting speakers. Our brunches feature lox, whitefish salad, herring, cheeses and assorted bagels, as well as coffee and juice. Check the website, [www.bethami.org](http://www.bethami.org), to join the Brotherhood, which entitles you to discounts on our events. Join us on Sunday mornings each week of religious school for our Sunday Morning Cafe. Last Year was action-packed with guest speakers, participation in Rebuilding Together, the

Temple Golf Outing at Worthington Manor, Sporting Events, and many other exciting things! Don't be left out. Get involved with the Brotherhood, SIGN UP TODAY.

Below is our event calendar for the fall of 2017-2018. (subject to change—please check Temple website, emails or Chadashot to confirm) If you have any ideas or suggestions, please call Ira Greenspan at 301-524-6412.

#### 2017 - 2018:

**Saturday, November 11, 7:00 pm - Wizards vs. Atlanta Hawks** - Tickets in Section 415 are \$44 each and include a free Wizards T-Shirt

**Sunday, December 3, 9:00 am - Brunch - Tom Temin, Federal News Radio, WFED and Kathy Goldgeier, WAMU** - Life on the Radio - Discussion panel on the broadcasting business

**Sunday, February 25, 9:00 am - Brunch** - Speaker - TBA

**Sunday, April 22, 9:00 am - Brunch - Kerry Wallach, Associate Professor and Chair, Dept. of German Studies, Gettysburg College, author of the**

**book Passing Illusions: Jewish Visibility in Weimar Germany**

**Sunday April - May - Re-Building Together** - Montgomery County, MD

**Tuesday, May 15, 11 am - Brotherhood /Temple Golf Outing** - Worthington Manor

#### SPECIAL EVENTS:

Fall - 2017 - Spring - 2018 - Roaming Happy Hour Gatherings throughout Montgomery County

Fall 2017 - National's Hockey

Spring - 2018 - Washington Wizards Event & Nationals Group Event

Spring, 2018 - Brotherhood Softball League (Weekly Games)

*Ira Greenspan,*

President

301-524-6412

[iragreenspan@aol.com](mailto:iragreenspan@aol.com)

Photos: September Brunch Speaker, David Bernstein





## WOMEN OF TEMPLE BETH AMI

### News

#### Crafts for a Cause

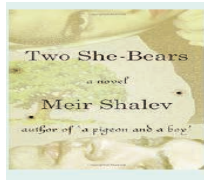
Crafts for a Cause will return on Wednesday, November 1, from 6:30 - 9 pm at the Temple. We will be preparing sustainable hygiene kits for Days for Girls (DfG), an international nonprofit organization.

These hygiene kits allow girls in developing countries to finish their schooling, obtain jobs, and lift their families out of poverty. We'll start off the evening with a pizza dinner and a short introduction to the work of DfG. No prior experience or sewing skills are required, and all necessary materials will be provided.

There is no charge to attend. All TBA members and friends over the age of 8 are invited and welcome to attend. Please RSVP to Sirina Tsai at 202-549-5071 or sirinatsai@yahoo.com.

#### Joint Brotherhood / WTBA Brunch

A joint Brotherhood/WTBA brunch will be held on Sunday, December 3 at the Temple at 9 am. Tom Temin, anchor of The Federal Drive on Federal News Radio, and Kathy Goldgeier, Managing Editor for Broadcast at American University's radio station WAMU, will lead a discussion on the broadcasting business. They will share stories about their most memorable radio broadcasts. The cost for this delicious brunch and stimulating discussion is \$10. RSVP online by 11/29. Please contact Ira Greenspan at 301-524-6412 with any questions.



#### WTBA Book Club

The next WTBA Book Club meeting will be held on Tuesday,

December 5 from 7:30 – 9 pm. The book for discussion is Two She-Bears by Meir Shalev. All TBA members are welcome to attend WTBA Book Club meetings.

Please contact Madeline D'Alessio at 240-460-8926 or mkdalessio@gmail.com for more information.

#### Manna Food Sorting

WTBA will be sorting food at Manna Food Center on Wednesday, December 13. This is a great Tikkun Olam activity to do with family and friends.

If you are interested in volunteering, please contact Rhonda Gaynor at Rhonda.gaynor@gmail.com.

#### Summer Camp Scholarships

For the summer of 2018, WTBA is excited to offer a limited number of scholarships for children to attend summer camp programs at either Temple Beth Ami or a camp affiliated with the Union for Reform Judaism (URJ). Information about URJ camps can be found at <http://urjyouth.org/camps>. Because of budget constraints, please only request this scholarship if your child would not be able to attend camp without this financial assistance. Please note that URJ camps listed on the website and TBA camps are the only camps for which the scholarships are available.

Applications are due by March 1, 2018 but will be considered after that date as funds allow. Please contact Jeanne Kahn at [JeanneKahn@aol.com](mailto:JeanneKahn@aol.com) for an application and/or more information.

#### WTBA Membership Brunch

In September, over 75 women schmoozed, ate, shopped, and eagerly listened to our guest speakers at the WTBA Membership Brunch.

Our featured speakers were State Delegate Aruna Miller and State Senator Cheryl Kagan. The speakers eloquently described their personal journeys into politics, some of the bills they have championed, and the Maryland state legislative process. We were all inspired and deeply engaged in the discussion.



Many thanks to the following volunteers who made the brunch successful: Rhona Arbit, Linda Burka, Catherine Copp, Flora Feldman, Michelle Freedberg, Judi Goozh, Jeanne Kahn, Suzie Kahn, Marilyn Lipowsky, Holly Lobel, Richel Lupkin, Jackie Manis, Rachel Maryn, Cecile Plost,

CONTINUED ON PAGE 20

## NURSERY SCHOOL NEWS

*Paula Sayag,  
Director*



### ARE YOU SURE MY CHILD IS DELIGHTFUL?!

As soon as we were seated last November at my preschooler's parent-teacher conference, her teachers started out, "Well, your daughter is delightful in class." I glanced at my husband out of the corner of my eye, caught his dubious expression that mirrored my own, and burst out laughing.

Don't get me wrong - of course we think our own daughter is delightful. But at the time, I was 30-some-weeks pregnant. Like our dog before a thunderstorm, my 3-year-old could sense that something momentous was coming. Delightful wasn't exactly the word we would have used to describe her behavior at home those days.

During the discussion that followed, her teachers gave us new ideas to try at home, eased our minds about her peer interactions and capabilities, opened our eyes to other challenging areas and proposed solutions, and above all, created a 2-way street of understanding between them and us that would serve

as a crucial avenue to success for the year.

That glimpse into our daughter's world at school - especially during an eventful time at home - proved invaluable.

We also left the meeting wowed by the staff's sophisticated knowledge of child development and learning, passion and patience for preschoolers, and their commitment to communicating with us. It turns out the teachers want to hear our perceptions of the strengths and needs of our kids just as much as we want to hear theirs.

Fellow parents, as you head into TBANS without your children in the coming weeks, consider this advice:

- Focus on your child, without your child. Think of quality, undistracted, dedicated time to talk about your kid - without him/her—as a gift. To maximize your allotted time, write down your questions in advance—or better yet, email them to the teachers before your meeting so they have time to prepare responses.

- The fall conference is more like a pulse check: it's too early in the school year to talk in depth about progress or abilities, but it's the perfect time to talk about your child's adjustment to everything a new year brings - including a new classroom and a new group of friends.

- Become friends with your kids' teachers. The TBANS staff are the most patient, gentle, and kindest breed of humans I've ever met. Not to mention, they are insanely knowledgeable -there's always a reason behind the way they do things, and a skillfully-applied theory behind that reason. As you set goals with them for your child, make it one of your goals to build a rapport with them. You won't be sorry.

- Insider tip: save room. There are always brownies and other treats waiting for you.

This year I have two children at TBANS (and none in my stomach), and I can hardly wait to chat about them with their teachers.

By *Jodie Fishman*,  
TBANS Correspondent

SEE CLASSROOM PHOTOS ON PAGE 16

**B'NAI MITZVAH***Profiles*

Please join with us at Shabbat Services during the month of November as we celebrate with...



**JOSEPH SAMUEL BLOOMFIELD**, son of Marnee and Albert, will become a Bar Mitzvah on Saturday, November 4. He is a seventh grade student at Herbert Hoover Middle School. Joseph has two older brothers, Max and Daniel. For his Mitzvah Project, Joseph will be cleaning up area hiking trails, specifically Cabin John Trail and Billy Goat Trail.



**SAMANTHA DYLAN BLAINE**, daughter of Stacey and Jason, will become a Bat Mitzvah on Saturday, November 4. She is a seventh grade student at Ridgeview Middle School. Samantha has an older brother, Logan, and a younger sister, Ella. For her Mitzvah Project, Samantha is participating in the FARE walk to raise funds and awareness of people living with food allergies.



**JONAH DAVID KARP**, son of Annie and Brett, will become a Bar Mitzvah on Saturday, November 4. He is a seventh grade student at Hallie Wells Middle School. Jonah has a younger sister, Sasha. For his Mitzvah Project, Jonah collected 30,000 soda pull-tops, helping Temple Emanuel (Roanoke, VA) reach its goal of collecting 1.4 million tops, representing the 1.5 million Jewish children killed in the Holocaust. The tops will be given to the Ronald McDonald House to help its fundraising efforts.

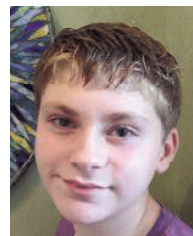


**GABRIELLA BEBE LIZONDO**, daughter of Jennifer Lloyd and Rob Lizondo, will become a Bat Mitzvah on Saturday November 11. She is a seventh grade student at Robert Frost Middle school. Ella has a younger sister, Anna, and younger brother, Max. For her Mitzvah Project, Ella is continuing the work she'd begun last year, raising funds through bake sales

and donating the proceeds to K-9 Lifesavers.



**JULIA EIRA LVOVSKY**, daughter of Allison Lvovsky and Steve Lvovsky, will become a Bat Mitzvah on Saturday, November 11. She is a seventh grade student at Frost Middle School. Julia has an older brother, Jack. For her Mitzvah Project, Julia is making homemade dog treats and delivering them to dog shelters around the community.



**ZACHARY EDENBAUM**, son of Gayle and Jonathan, will be called to the Torah as a Bar Mitzvah on Saturday, November 18. He is a seventh grade student at Herbert Hoover Middle School. Zachary has an older brother, Harris. For his Mitzvah Project, Zachary is collecting food and direct donations for Manna's Smart Sacks program, which feeds over 2800 children each week, bridging the gap between Friday and Monday, providing nutritious foods for children and their families who might not have another meal until after the weekend.



**ELIZABETH (LIZZIE) ANNE GELMAN**, daughter of Lenore Gelman and Eric Gelman, will become a Bat Mitzvah on Saturday afternoon, November 18. She is a seventh grade student at Lakelands Park Middle School. Lizzie has three older brothers, Teddy, Sam, and Jack.



**JAKE IAN GLUCK**, son of Ira Gluck and Brenda Seaver, will become a Bar Mitzvah on Saturday afternoon, November 18. He is a seventh grade student at The Bullis School. Jake has an older sister, Rachel. For his Mitzvah Project, Jake is fundraising for the Rheumatology Research Foundation in honor of his late grandmother Leslie Gluck, who was a member of the congregation.

CONTINUED ON PAGE 18

## MACHANE TBA NEWS

*Kim Roberts,  
Director*



### Calendar

#### **Sunday November 5**

Machane TBA in session

#### **Tuesday, November 7**

Mid-Week Gr 3 - 6 in session

TBAjrHigh in session

TBAHigh – CORE night

9th Grade Parent Meeting 6:30 pm

#### **Fri-Sat, November 10-11**

8th Grade Field Trip-Baltimore

#### **Sunday, November 12**

Machane TBA Primary in session

Gaga League 12:45 - 2:00 pm

#### **Tuesday, November 14**

Mid-Week Gr 3-6 in session

TBAjrHigh in session

TBAHigh – Chug 1 night

(Aliyah Bet, Krav Maga,

Leadership & Photography)

10th Grade Steering Committee

6:30 pm

#### **Sunday, November 19**

Machane TBA in session

6th Grade Breakfast Schmooze-

time TBD

#### **November 21 - 26**

NO SCHOOL

#### **Tuesday, November 28**

Mid-Week Gr 3-6 in session

TBAjrHigh in session

TBAHigh – CORE night

Gr 8-12 Parent Program 6:30 pm

The Machane TBA “L’mata” program is our experiential learning program for grades 3-6 that happens every Sunday during the school year. Most of our l’mata programming takes place in spaces on the main level of our building, hence the nomenclature “l’mata,” or “downstairs.” This year marks the seventh year of our award-winning l’mata program. At its inception, goal of the l’mata program was to take conventional “Hebrew School”, turn it on its head, and create an experiential learning program which provides Hebrew learning time via a lively tefillah/ruach session, large-scale programs for grades 3-6, customized chugim so that students can learn about an aspect of Judaica which interests them, and “Kitah Time” which introduces a middot (Jewish Values) curriculum. In doing so, we aim to create community and deep engagement with Jewish life. Large-scale programs address issues ranging from holidays, Jewish eco-farming, Jewish history, life cycle, tzedakah, and Jewish culture. In our customized chugim, we offer a rotating variety of courses such as music, drama, movement, social action, art, and farming, to name a few.

Our opening program this year focused on the mitzvah of tefillin. Many of our students had never seen or touched tefillin before. We learned that the tradition of

putting on tefillin goes back at least 2000 years in Judaism (archaeological sites have revealed 2000 year-old tefillin, which are much like modern-day tefillin). Each tefillin box contains four Torah texts, which talk about reminding ourselves constantly of the central idea in Judaism—that is, the idea of One God. Wrapping tefillin is a physical manifestation of that reminder, and we learned that in Orthodox Jewish communities some Jews put on tefillin every day as they recite the morning prayers. Students had that opportunity to learn how to wrap the “yad” (arm) tefillin and how to create the letters shin, dalet, and yud, which spell the word “Shaddai,” which is one of the Hebrew names for God. After viewing a short film which visits a tefillin factory in Israel, students inserted their own scroll into a tefillin craft project and then they decorated their own yad tefillin to take home. This program was a wonderful opportunity to engage with a Jewish ritual object and tradition which harkens back millenia and which connects us in a truly experiential way to the roots of Judaism!

The tefillin program is just one example of the ways that the l’mata program endeavors to teach about the many facets of Jewish tradition in an exciting, accessible, and enjoyable context.

**MACHANE TBA**  
*Tefillin Project*



## SIMCHAS

### *Mazel Tov to...*

**Gabriel Klein and Joey Neustadt** each on becoming a Bar Mitzvah

**Jamie Geringer, Tallulah Sandler, Lilly Triandafilou and Madeline Shapiro** each on becoming a Bat Mitzvah  
**Diane and David Ferraro** on the Bat Mitzvah of their granddaughter, **Bella Meltzer**

**Marie and Lloyd Ronick** on the marriage of their son, **Eric and Kirby Stirland**

**Judy Fox-Tepper and Gary Tepper** on the engagement of their son, **Alex, to Arielle Feldshon**

**Lindsey and Justin David** on the birth of their daughter, **Alexa Eliana**

**Jody Rosenblum and Larry Rosenblum and Marilyn Lipowsky** on the birth of their granddaughter and great granddaughter, **Leona Rose Weathers**

**Lois and Roger Rothman** on the birth of their grandson, **Ethan Wernick**

**Linda and Jeff Levine** on the birth of their grandson, **Solomon Max Levine**

**Rabbi Jack Luxemburg** on being named Vice Chair of ARZENU

### Special thanks to:

**The Challah Club** for providing our weekly Shabbat challot

**The Culinary Crew** for the apples and honey Oneg Shabbat

## COLLEGE CONNECTION - THANK YOU



The clergy staff and I would like to thank the College Connection volunteers; Susan Baruch, Stacie Berman, Lisa Goodman, Abby Gritz, Larrie Greenberg, Michelle Katon, Hannah Manis, and Kandace Needle. 88 packages were sent

to our college students filled with goodies and greeting for Rosh Hashanah. If you have not already registered your student or you would like to be a volunteer, please contact me at, [jrmhyp@yahoo.com](mailto:jrmhyp@yahoo.com). Our Chanukah packages will go out on December 6th.

Thank you again to our wonderful volunteers, **Jackie Manis**, College Connection Chair

## THANK YOU TO OUR ROSH HASHANAH BASKETS VOLUNTEERS!

THANK YOU to the following volunteers for picking up and delivering 70 Rosh Hashanah baskets (containing High Holiday goodies and necessities) to Jewish families in need in our area. Your efforts are very much appreciated! This project is sponsored by the Jewish Social Services Agency along with TBA's Tikkun Olam Committee.



Thank you to: Elizabeth Joseloff & Adam Levy, Alissa Miller & Family, Marci Maged, Jenn Fechter & Family, Diane Castiglione, Leslie Marks & Louis Solomon, Amy Wollins, Cheryl Berkowitz, Ryann Morris, Nicole & Brian Zimmerman, Linda & Ira Berger, Fran & Harry Hertz, Louise & Elliott Allentuck & Family, Sherri and Jim Lieberman, Sirina Tsai, Barbara Strong & Michael Kielbiewicz, Michelle & Daron Freedberg, and Lynn & David Stander Also, a special thank you to Monya Cohen and Tina Levine for coordinating the project again this year! (We apologize for any omissions or misspellings.)

**PHOTO REVIEW**

*New High Holy Day Prayer Books, Honey and Challah, Selichot and Empty Nesters*



## TBANS PHOTOS

### *Cooking, Circle Time, Blocks, Cars, and Chicken Soup*





**COMMITTEE***News***TIKKUN OLAM IN ACTION****Looking To Help Others This Holiday Season?**

Here's a list of projects sponsored by TBA's Tikkun Olam Committee. We hope you'll find something that interests you and your family! Thanks in advance for helping out.

**Food-Related Projects**

**Help Nourish Now Provide Thanksgiving Food to 5,000 Hungry People in Montgomery County:** Food donations needed to help feed area families and individuals who might not have a Thanksgiving dinner otherwise. Canned goods needed: yams, carrots, pie filling, chicken broth, green beans, gravy and cranberry sauce. Bagged/boxed foods needed: instant mashed potatoes, dried stuffing mix, and muffin mix. Collection boxes will be in the TBA lobby November 1 - 17.

**Children's Inn Thanksgiving Dinner:** Help make Thanksgiving dinner possible for families of sick children spending the holiday at NIH. Donate food or funds to purchase food before the holiday, or help set up and serve food on Thanksgiving Day (Thursday, November 23) at the Children's Inn in Bethesda. Sign up via ChaverWeb at bethami.org. Questions? Contact Gail Kaplan-Wassell at gail.kaplanwassell@gmail.com.

**Christmas Dinner for the Homeless:** Set-up, serving, and clean-up help needed as we substitute for volunteers of the Lord's Table soup kitchen at St. Martin's Church in Gaithersburg on Christmas Day (Monday, December 25) to provide a warm and festive holiday meal to homeless people in our area. Contact Joanne Brodsky at brodsky.joanne@gmail.com for more information or to volunteer. (Children must be ages 10+ and accompanied by an adult.)

**Gift-Giving Efforts**

**Adopt-a-Family Drive:** "Adopt" a family affiliated with Montgomery County Child Welfare Services and donate your choice of gifts from the child(ren)'s lists of Christmas wants/needs. Or, help provide gifts to the Columbian refugee

family that TBA is assisting. Email Judi Goozh at paul-judig@verizon.net or Robin Temin at robin.temin@verizon.net for more information or to volunteer.

**Unwrapped Toy/Game Drive:** Help bring holiday cheer to the children of South Lake Elementary School by donating new, unwrapped toys/games for kids ages 9 - 11 (per the school's request). Collection boxes will be in the TBA lobby December 1 - 15.

**Looking for More Volunteer Opportunities?**

Community Ministries of Rockville, Inc. has a variety of volunteer opportunities during the holidays. For more information, visit cmrocks.org or contact andreakwink@cmrocks.org.

ShalomDC.org also may have volunteer opportunities this holiday season.

**PRESIDENT** CONTINUED FROM PAGE 2

Guidelines / other, alternate revenue models

- Jewish Preschool
- Jewish Elementary Education
- Jewish Middle School Education & B'nai Mitzvah Preparation
- Temple Board Governance / Principles & Guidelines
- Sustained Giving / Principles, Guidelines, Programs
- Congregational / Stakeholder Feedback / Principles, Guidelines, Program
- New models of affiliation

We are ready to engage TBA's leadership and our membership in redefining our why. Our Mission must reflect our purpose as an organization and who we are today. What an exciting time this is in the life of our Congregation! Today, we continue to examine our past, to reflect on our present, and to imagine our future in an effort to remain not only meaningful but spiritually powerful. The Vision 2020 Committee will be reaching out for help as this process proceeds inviting you to rethink, to re-imagine, and to celebrate your commitment to our future. Be part of the conversation.

**COMING**  
*In December*



**Network & Nosh** **Friday, December 1** **8 - 9 am**  
**NetWork & NOSH** Are you in business for yourself? A budding entrepreneur or a seasoned business owner? Temple Beth Ami invites you to meet, network and schmooze with others like yourself from the congregation at "Network & Nosh." These get-togethers will include a light breakfast and a speaker series with dynamic business leaders sharing their success and challenges. No charge, but your RSVP to Shelly Gordon (SLG@Bethami.org) allows us to plan best. Please contact Marcy Waxman with questions (marcywaxmanrealty@gmail.com).



**Live & Learn with Cantor Eschler** **Tuesdays, December 5, 12, 19** **10:30 am – 12 pm**  
All are invited to our popular adult daytime learning series. Topic Hanukkah.



**Shabbanukkah** **Friday, December 15** **6 pm**  
Don't miss our popular "Shabbat + Hanukkah" hybrid celebration, beginning with a Latke Bar and Maccabee Martinis, followed by an Indoor Picnic Shabbat with The ShabbaTones Temple Band, Candlelighting and a festive Oneg Shabbat with a set by the new "ShabbaTeens!"

**B'NAI MITZVAH** CONTINUED FROM PAGE 11



**MADLINE AVERY KAPLAN,** daughter of Lisa and Jonathan, will become a Bat Mitzvah on Saturday, November 25. She is a seventh grade student at Kingsview Middle School. Maddie has an older sister, Haley. For her Mitzvah Project, Maddie created a team to walk at the FARE Food and Allergy Heroes Walk and to date has raised almost \$2000.

**Can't Get to Services?**

Be with us through video streaming. Go the home page of our website and click on view video streaming in the Service Schedule box. You can also listen to services by calling 301-309-3834.

**OUR DIRECTORY IS ON-LINE**

The Temple directory is on line through Chaver-web. Please remember that you can go into your profile and update it. If you've never looked at it, please take a minute to see what's there. The directory is available to Temple members only.

**RABBI** CONTINUED FROM PAGE 1

with us! Yaffa, Yael and Menachem will be here to answer any questions we might have about our upcoming congregational trip to Israel, and they are looking forward to getting to know you. This will be my first Israel trip with you, and I am excited to experience the Israel I know and love with you. For more information, log on to our website and look for “Israel” under the events section. There you will find a detailed itinerary and pricing, as well as information on how to book your spot.

If you would like to join us on the 5th, please RSVP to Susan Neumann spn@bethami.org.

“From Chaotic to Calm: Transforming Family Relationships” with Jules Alvarado - Tuesday, November 28

On Rosh HaShanah, I spoke about the need to pay closer attention to our mental health, especially when it comes to our children. Together we looked at how painful and destructive the lingering stigma against mental illness is, and I asked us as a community to make Beth Ami a safe place to talk about our own mental health. I also mentioned Jules Alvarado, a remarkable speaker who had a powerful and immediate impact on my own life.

Jules will be with us for a full day on November 28; two special sessions for adults are open the congregation (she will not be meeting with children during this trip). Both open sessions will be interactive, science-based and practical. Together we will address head-on the ways we interact with our children and each other out of habit, and how we can be better parents, partners, etc. This is NOT your typical parenting workshop, which is why we are bringing Jules all the way from Colorado to join us. I hope that you will take advantage of this unusual opportunity.

Here are the details for the day:

Open Session I 9:45 – 11:45 am

This workshop is especially geared for the parents/grandparents of very young children. This session is open to Beth Ami members and TBANS families.

Closed Session (in the afternoon) – staff training for TBANS faculty and other staff


Open Session II 6 – 8 pm

This workshop is especially geared for the parents/grandparents of primary, middle and high-school kids – but will also be applicable for parents of adult children. This session is open to Beth Ami members.

If the open session that seems best for you does not fit into your schedule, don't worry! You can attend the other one and still gain practical benefit. Jules can work with any makeup of group toward the same outcome.

To make sure that we have enough seats and materials for everyone, please RSVP to Shelly Gordon at slg@bethami.org by November 26.

I look forward to seeing you in synagogue soon!



*“In the rustling of the leaves and in the beauty of autumn, we remember them.”*

*Excerpt – Roland B. Gittelsohn*

**No one has to do it alone.**

Someone who cares will always be here to help you with your funeral needs, in a supportive, caring way.

 **Garden of Remembrance**  
GAN ZIKARON MEMORIAL PARK

17 YEARS OF CARING SERVICE AND DEDICATED SUPPORT TO  
THE JEWISH COMMUNITY OF GREATER WASHINGTON

Call Janice Rosenblatt at Temple Beth Ami, (301) 340-6818,  
or visit [www.gardenofremembrance.org](http://www.gardenofremembrance.org).

Partner Agency of  
The Jewish Federation  
OF GREATER WASHINGTON 

## WOMEN OF TBA CONTINUED FROM PAGE 9

Janet Schiller, Barbara Strong, and Robin Temin. A special thank you goes out to Melissa Bauman for chairing this very successful event!

### Ongoing Projects

**Kippot** for B'nai Mitzvah, Brides and Grooms are available at discount prices through WTBA. View styles at [www.kippah.com](http://www.kippah.com), then contact Michelle Freedberg at [mefreedberg@gmail.com](mailto:mefreedberg@gmail.com) to place your order.

The **Judaica Shop** will be open Tuesdays, Wednesdays and Thursdays from 9:30 am to 1:30 pm and on Sundays when religious school is in session from 8:45 am to 12:45 pm. Volunteers are needed and shifts are just two hours long - you can work once a week, or every other week depending on your schedule.

Please contact Jackie Manis at [jrmhyp@yahoo.com](mailto:jrmhyp@yahoo.com) or 561-212-2104 for more information or Rachel Maryn at [rmaryn@verizon.net](mailto:rmaryn@verizon.net) to volunteer in the shop.

WTBA will present **TBA newlyweds** as a wedding gift the beautiful book [On the Doorposts of Your House: Prayers and Ceremonies for the Jewish Home](#). Please email Barbara Ranhand at [Barbara.ranhand@verizon.net](mailto:Barbara.ranhand@verizon.net) if you have information about any Temple families who are planning a wedding.

### WTBA E-mail Address

Do you have a question about the Women of Temple Beth Ami but don't know who to ask? Would you like to suggest a program or project but don't know who to contact? WTBA has set up an e-mail address specifically for these types of questions. This e-mail account will be checked at once a week by the Leadership Council and you can anticipate a response within two weeks. If you need a faster response, please call the Temple office directly.

The WTBA e-mail address is [womenoftemplebethami@gmail.com](mailto:womenoftemplebethami@gmail.com). We look forward to hearing from you!

*Elizabeth Joseloff*

WTBA Chadashot article editor

## MALMO, SWEDEN CONTINUED FROM PAGE 7

We were taken on a quick tour of Malmo, learning of its special role during World War II in helping to save the Jews of Denmark, and then Scandinavians caught in Nazi POW and concentration camps.

Upon returning home, we read more about Jewish Malmo and its problems with its neighbors. In 2009, the Malmö police received reports of 79 anti-Semitic incidents, double the number of the previous year (2008). By 2013-14, there were 137 anti-Semitic hate crimes, with half of hate crimes in Skåne's biggest city, Malmö, directed against individual Jews. Yet, the global 2014 ADL study of anti-Semitism places Sweden as one of the least anti-Semitic countries in the world. Only 4% of the population harbors anti-Semitic attitudes. When a bomb exploded outside the Malmo JCC in 2012, Malmö's Network for Faith and Understanding (which includes local churches and mosques) responded with a demonstration of solidarity.

There are no police cars or police barriers outside the Jewish Community Center, as exist in many European cities. Instead, the JCC was physically reinforced. To gain entrance into the building's foyer, one enters through a reinforced steel door, secured by several steel rods strengthening the door locks. The foyer faces a receptionist behind a reinforced wall and bullet-proof glass. After ensuring your identity, and the fact that the outer door is secured, she will unlock an interior door (also steel with steel bolts that connect into the steel doorposts).

ECM would very much like to develop a "sister congregation" with us. Their programming needs appear to match the strengths of Temple Beth Ami. Their priority needs are assistance in programming for inter-married couples, young families, and the age extremes of younger children and older adults. Perhaps this is a relationship we may want to consider in the future.



## ONGOING Information

### Is Your Email Address Current? Are You on Chaverweb? Are You Connected?

If you are not yet connected to the Chaverweb system, it may be because we do not have an up-to-date email address. Please let the Temple office know if you did not get the emailed invitation and we will help you connect. Chaverweb will enable you to update your personal profile, view the on line membership directory, review your account (and, soon, pay your account), register for school, and classes, etc.

If you are already in Chaverweb, but FORGOT YOUR PASSWORD, please DO NOT SIGN IN AS A GUEST; simply click on "forgot your password" and you will receive a new one by email.

### GREAT NEWS!!! YOU CAN SHOP AT AMAZON AND SUPPORT TEMPLE BETH AMI AT THE SAME TIME!

Do you shop on the Amazon.com website? Do you know that if you enter the Amazon website from a link on the Temple Beth Ami website, TBA will earn at least 4% of your purchase price for every purchase you make? It is very easy and you will be helping TBA. You can access the Amazon site to earn money for TBA in one of two ways: Either go to the TBA website and click on the small Amazon.com link at the top of the home page, or use this URL which takes you directly to Amazon: <http://tinyurl.com/bethamishop>. BUT REMEMBER, TBA ONLY EARNS MONEY IF YOU GO TO AMAZON THROUGH THE TBA WEBSITE OR THIS URL!

Just imagine, you can "shop 'til you drop" without leaving home and put some badly needed cash in TBA coffers. GO TO IT!

*"May the memory of  
these Righteous  
be for a blessing"*

We mourn the recent death of:

Dr. Bertram Dinman  
father of Jonathan Dinman

Tema Kaufman  
mother of Peter Kaufman

Roberta (Bertie) Lehrer  
mother of Debi Asai

Iris Loev  
mother of Marc Loev

Leon Reiter  
husband of Harriet Reiter

Pernilla McAlevey  
niece of Suzanne Kujawa and  
Mitch Rotbert

David D'Alessio  
father of Steven D'Alessio

Dr. Robert Katz  
husband of Elaine Katz

Dr. Polly Etkind Hochberg  
sister of Barbara Etkind

## **WE GRATEFULLY** *Acknowledge*

A contribution to a Temple fund is a meaningful way to support the Temple community while honoring a birthday, recuperation, wedding, graduation, birth or any special occasion. Donations may also be made in memory of loved one. For a minimum \$10 donation, an acknowledgement will be sent to the person you wish to honor or the family of the deceased. If you have any questions about existing funds or wish to establish a fund, please call Janice Rosenblatt, Executive Director, at 301.340.6818.

### **ADMINISTRATIVE FUND IN MEMORY OF MARK GREENSTEIN**

Donation by Jon and Barbara Ranhand

### **ADULT EDUCATION FUND**

In memory of:

POLLY ETKIND HOCHBERG, sister of Barbara Etkind (Rabbi Jack Luxemburg), by Don and Marcia Kaplan

LEON REITER, husband of Harriet Reiter, by Sherri and Jim Lieberman, Loretta Feldman, Tom and Betty Loggia, Peter and Susan Cohen

In honor of:

SHIRLEY LEVIN's Special Birthday by Gail Kaltman, Gary and Evelyn Michel, Charlotte and Harvey Zuckman, Pauline Walstein, Jim and Sherri Lieberman, Peter and Susan Cohen

ROBERTA FEIGEN's Special Birthday by Gail Kaltman, Gary and Evelyn Michel, Cathy Friedman

### **ANNUAL APPEAL (HIGH HOLY DAYS) FUND**

SHOMRIM (GUARDIANS):

Jeannette and Norman Sturman, Martin Norwitz, Joan and Brain Ochs, Jim and Sherri Lieberman, Cathy Friedman

MAGEN (PATRONS):

Robin Bergen and Janice Hackett, Rebecca and Marc Hertzman

CHAVERIM (FRIENDS):

Brad and Pat Harvey, Lawrence Rosenbaum, Joy and Denis Franks, The Carins, Catherine Copp, Terry and Debbie Korth, Loretta Feldman, Michael and Rachel Maryn, Mitchell and Judy Glassman

TOMHIM (SUPPORTERS):

Walter and Angela Harris, Josh and Loren Felsher, Mitchell and Rhonda Gaynor, Carrie and Avi Halpert, Dr. and Mrs. Seth Steinberg, Stephen and Marla Brannan, Lillian Caplan, Linda and Ian Kramer, Allison Weintraub, Janice Rosenblatt and Ed Williams, Phyllis and Mark Silverman, Madeline and Steven D'Alessio, Bobbe and Gary Winter, Howard and Michele Koenick, William and Bernice Samuels, Terry and Rhona Arbit, Lauren Bogart, Ira and Nancy Shapiro, Kirk and Andrea Denicoff, Donna and Jimmy Smith, Howard and Karen Hoffman, Peter Cantor, Steve and Brenda Friedman, Dennis and Sandra Friedman, Arlynn and Mark Joffe, Michael Wolly, Robert Goldman, Adele Narva, Edythe Kramer, Michael & Joan Stern, Pauline Walstein, Thomas and Janet Schiller, Sue & David Fialkoff, Fred and Susan Kleiman, Joel and Nana Falik, Mitchell and Lisa Frost, Andrew and Carolyn Katz, Betty and Tom Loggia, Robert Ilya Etin, Mark and Janet Wallace, Barry and Sheila Taylor, Jackie and Michael Manis, James and Lisa Richardson, David and Karen Steinfeld

BONIM (BUILDERS):

Jim and Ginny Michalowski, Elizabeth Joseloff and Adam Levy, Diane Castiglione, Geoffrey and Tobi Platnick, Sheila Yuter, Mitzi and Norm Estrin, Barbara Linder and Andrew Eisen, Allen and Marilyn Shapiro, Stanley and Ann Alster, Scott Blacker, Mary Ann Greenburg, Jonathan and Tracey Haber, Seth and Terry Steinberg, Jonathan and Lisa Kaplan, Fredric & Elaine Gillespie, Morris & Sybil Cantor, Donald and Livia Weinstein, Ronald and Lisa Weinstein, Jed and Laura Tonelson, Marc and Luanne Stanley, Edward and Susan Dosik, Jody Rosenblum, Bruce and Ann Goldenson, Ernest and Stacia Friedman-Hill, Kevin and Cara Schorr, Jody Rosenblum

TOREIM (CONTRIBUTORS):

Art and Harriet Sturm, Oscar and Judith Tunis, Dorothy Welan, Diane and David Ferraro, Jack and Beth Rosenthal, Matt and Laurie Rudorfer, The Stein's, Jerald and Tina Levine, Steven and Susan Lapidus, Kenneth and Cheryl Hepfer, Stanley & Linda Berman, Peter and Susan Cohen, Harriet Reiter, Barbara Greenebaum, Francine and Neil Schulman, Robert and Marlynn Goren, Peter and Susan Cohen

### **CAMPERSHIP FUND**

In honor of:

SIMONE KRAMER on becoming a Bat Mitzvah by Ira and Judith Dwoskin

SIMONE KRAMER singing in the choir by Ira and Judith Dwoskin

SHIRLEY LEVIN's Special Birthday by Rebecca and Marc Hertzman

In memory of:

DAVID MULLER by Dorothy and Richard Fox  
MORTY FOGEL by Dorothy and Richard Fox  
DR. ROBERT KATZ, husband of Elaine Katz, by Ann and Bruce Goodman, Katherine Woodall, Leslie Zedd and Kenneth Berger, Joel and Joan Simon, Phyllis and Mort Lessans

DAVID D'ALESSIO, father of Steven D'Alessio, by Stephen and Lisa Paul

LEON REITER, husband of Harriet Reiter, by Helene Crystal, Stanley and Bonita Favin, Hanna Lee Pomerantz, Rebecca and Mark Hertzman

POLLY ETKIND HOCHBERG, sister of Barbara Etkind (Rabbi Jack Luxemburg), by Rebecca and Mark Hertzman

### **CANTOR'S DISCRETIONARY FUND**

In honor of:

ADAM GOTKIN becoming a Bar Mitzvah by J.L. Levit and Paula Mintzies

MADELINE SHAPIRO becoming a Bat Mitzvah by Stephen and Harriet Shapiro

CANTOR LARRY ECHLER with gratitude for helping prepare Zachary for his Bar Mitzvah

Ernest & Stacie Friedman-Hill

## CRITICAL ISSUES FUND

In memory of:

DAVID D'ALESSIO, father of Steven D'Alessio, by Charles and Cecile Plost

POLLY ETKIND HOCHBERG, sister of Barbara Etkind (Rabbi Jack Luxemburg), by Art and Linda Jacobson

## ENCORE

In memory of:

MORRIS WEINSTEIN by Don and Livia Weinstein

In honor of:

SHIRLEY LEVIN's Special Birthday by Marge and Bob Winick

## HINENI FUND

In memory of:

IDA WOLLY, mother of Michael Wolly, by Marge and Bob Winick

LEON REITER, husband of Harriet Reiter, by Marge and Bob Winick

POLLY ETKIND HOCHBERG, sister of Barbara Etkind (Rabbi Jack Luxemburg), by Marge and Bob Winick, Donna and David Kanin

## HOLOCAUST EDUCATION FUND IN MEMORY OF OSCAR POHORYLES

Donation by Liese Fischer

## INTERFAITH FAMILIES FUND

In honor of:

LILLY TRIANDAFILOU becoming a Bat Mitzvah by Jayme Holstein

## ISRAEL SCHOLARSHIP FUND IN MEMORY OF MARTHA WOHL

In memory of:

POLLY ETKIND HOCHBERG, sister of Barbara Etkind (Rabbi Jack Luxemburg), by Brad and Pat Harvey

## JNF GROVE FUND

In memory of:

RICHARD SUGARMAN by Michael and Gail Kaltman

POLLY ETKIND HOCHBERG, sister of Barbara Etkind, by Cathy Friedman, Beth and Jack Rosenthal

LEON REITER, husband of Harriet Reiter, by Joy Kahn

## LIVE & LEARN FUND IN MEMORY OF SALLY B. KERA

In memory of:

LEON REITER, husband of Harriet Reiter, by Leslie Shapiro, Buzz and Lynn Karpay, Carol S. Martin, Debra and Robert Cowen

DR. ROBERT KATZ, husband of Elaine Katz, by Edythe and Darryl Runett

In honor of:

JODY ROSENBLUM becoming a grandmother and MARILYN LIPOWSKY becoming a great-grandmother by Dorothy Welan

## MACHANE TBA (RELIGIOUS EDUCATION) SCHOLARSHIP FUND IN MEMORY OF BUD LEVIN

In memory of:

POLLY ETKIND HOCHBERG, sister of Barbara Etkind (Rabbi Jack Luxemburg), by Shirley Levin and Jules Bowen

In honor of:

SHIRLEY LEVIN's Special Birthday by Catherine Copp, Paul and Marilyn Yentis

## MUSIC EQUIPMENT FUND

In memory of:

DAVID D'ALESSIO, father of Steven D'Alessio, by Seth and Terry Steinberg

## NURSERY SCHOOL DIRECTOR'S FUND

In honor of:

The birth of LEONA ROSE WEATHERS, granddaughter of Jody Rosenblum and great granddaughter of Marilyn Lipowsky, by Joan and Brian Ochs

## NURSERY SCHOOL PROFESSIONAL DEVELOPMENT FUND IN HONOR OF KAREN GREENBERG

## MENT FUND IN HONOR OF KAREN GREENBERG

In honor of:

The birth of LEONA ROSE WEATHERS, granddaughter of Jody Rosenblum and great granddaughter of Marilyn Lipowsky, by Gary Tepper and Judy Fox-Tepper

## NURSERY SCHOOL SCHOLARSHIP FUND IN MEMORY OF JOEL BLUE

In memory of:

GREGG MILLER, brother-in-law of Irwin Slonin, by the TBANS Staff

In honor of:

The birth of LEONA ROSE WEATHERS, granddaughter of Jody Rosenblum and Larry Rosenblum, by the Temple Beth Ami Nursery School Staff

RHONDA GAYNOR and KAREN KOMINSKY by Karen and Jerrold Greenberg

The marriage of MATTHEW BLUE and LIHI KANTOR, son and daughter-in-law of Loretta Blue, by the Temple Beth Ami Nursery School Staff

## ONEG FUND

In memory of:

POLLY ETKIND HOCHBERG, sister of Barbara Etkind (Rabbi Jack Luxemburg), by Bernard and Cynthia Silverstein

Donation by Richard Cohn

The Sandler family in honor of TALLULAH becoming a Bat Mitzvah

Matthew Klein in honor of GABRIEL becoming a Bar Mitzvah

Amy and Steve Wollins in memory of ESTHER WOLLINS

Moira and Josh Carin in memory of VITALIANA CARPIO

Loretta Feldman in memory of ARTHUR FELDMAN

Joy Ammerman and Denis Franks in memory of ROBERT RUMIZEN, ALMA FRANKS, LENELL AMMERMAN and DANIEL FRANKS

Roberta and Eric Schneider in memory of

JAMES ROBERT DEFIBAUGH  
 Patricia and Stephen Levee, Leslie and James Weightman in memory of HARRIS H. LEVEE  
 Nancy and Ira Shapiro in memory of ALBERT H. SHERMAN  
 Shari and David Barash in memory of DANIEL BARASH  
 David Sacks in memory of ELTON RESNICK  
 Myra, Lillian, Glennis, Elliot and Ariana Rosen in memory of VIVIEN JEAN ROSEN  
 Susan and Stuart Wohl in memory of MURRAY WOHL  
 Catherine Copp in memory of MAX TISHLER  
 Susan and Stuart Wohl in memory of ESTHER LICHTENSTEIN  
 Seena and Gary Bulmash in memory of DOROTHY BULMASH  
 Lisa and Stephen Paul in memory of LILLIAN PAUL  
 Shirley Levin and Jules Bowen in memory of LILLIAN URBACK  
 Jane Jacobs in memory of IRVING LUCKOM  
 Bernard and Cynthia Silverstein in memory of MATTHEW STEINBERG, CLAIRE STEINBERG, YETTA GEIER and POLLY ETKIND  
 Judith Blickstein in memory of BERYL BLICKSTEIN  
 Mitzi and Norm Estrin in memory of ANNE ESTRIN  
 Barbara and Barry Fayne in memory of MARTIN HORNER  
 Roberta and Eric Schneider in memory of HENRIETTE EHRlich  
 Bobbie Greenebaum in memory of LEONARD GREENEBAUM  
 Michele and Adam Schwartzman in memory of CHARLES BLAIR  
 Elaine Katz in memory of HARRIET KATZ  
 Nancy Gordon and Robert Parker in memory of CHARLES PARKER  
 Anita Berns in memory of JESSE BERNS  
 Anita Berns in honor of the Bat Mitzvah of Fran and Harry Hertz' granddaughter  
 Roberta and Jerry Feigen in memory of BESS FEIGEN  
 Sherri and Jim Lieberman in memory of ELAINE LIEBERMAN  
 Charlotte and Harvey Zuckman in memory of GEORGE ZUCKMAN

Debbie Koss and Richard Goldstein in memory of HARRIET GINSBURG AND JEFFREY GINSBURG  
 Sandra and Dennis Friedman in memory of ALLEN FRIEDMAN  
 Monya and David Cohen in memory of HARRIET GINSBURG AND JEFFREY GINSBURG and SOPHIA FAGAN  
 Leslie and Jason Katz in memory of HELEN BOGEN KATZ  
 Rachel Cohen and Jon Dinman in memory of STEFANIE DINMAN  
 Linda and Stanley Berman in memory of CLARENCE A. BERMAN  
 Sharon and Ed Samuels in memory of POLLY MAYER  
 Phyllis and Joel Polster in memory of MORRIS FRUIT

**PRAYER BOOK FUND**

In memory of:  
 IDA GILLMAN WOLLY, mother of Michael Wolly, by Lynn and Buzz Karpay  
 POLLY ETKIND HOCHBERG, sister of Barbara Etkind (Rabbi Jack Luxemburg), by Connie Heller

**PRIMARY SEDER FUND IN MEMORY OF JILL WOLLY**

In memory of:  
 IDA WOLLY, mother of Michael Wolly, by Ed and Elinor Sondik

**RABBINIC FUND IN HONOR OF RABBI JACK A. LUXEMBURG**

In memory of:  
 POLLY ETKIND HOCHBERG, sister of Barbara Etkind (Rabbi Jack Luxemburg), by Fredric and Elaine Gillespie, Jon and Barbara Ranhand, Sherman and Adele Winters, Scott and Judith Graham, Loretta Feldman, Donald and Livia Weinstein, Donald and Marilyn Goldman, Thomas and Janet Schiller, Edward and Elinor Sondik, Robert and Marjorie Bajefsky, David and Leslie Nelson, Charles and Cecile Plost, Helen Salzberg, Edythe and Darryl Runett, Madeline and Alan Weinstock, Jerry and Roberta Feigen, Terry

and Debra Korth, Sheila Yuter

In honor of:  
 The marriage of JONATHAN GOLUB and SHARI DAVIDSON by Marge and Bob Winick, Helen Salzberg  
 RABBI LUXEMBURG by Leslie and Ronnie Sax  
 SANDY AND PHIL MARKS' special anniversary by Robert and Marjorie Bajefsky  
 The recent births of our twin grandsons, OZ AND HAREL LIEBER, by Gary and Roseanne Lieber

**RABBIS' DISCRETIONARY FUND (RABBI POKRAS)**

In memory of:  
 LOIS SACKS, wife of David Sacks, by Barbara Strong and Michael Kielbiewicz  
 ROBERT KATZ, father of Matthew Katz, by Barbara Strong and Michael Kielbiewicz

In honor of:  
 JEREMY KOTZ becoming a Bar Mitzvah by Joan Kotz  
 RABBI POKRAS' knowledge and sharing of Jewish law and customs by Robert Drummer and Susan Stiles  
 RABBI POKRAS for providing clergy services for our family during shiva by David Landau and Family  
 ZACHARY FRIEDMAN-HILL becoming a Bar Mitzvah by Ernest and Stacia Friedman-Hill  
 SIMONE KRAMER becoming a Bat Mitzvah by Jonathan and Terri Kramer

**RABBIS' DISCRETIONARY FUND (RABBI WEISS)**

In memory of:  
 DAVID D'ALESSIO, father of Steven (Madeline) D'Alessio, by Barbara Strong and Michael Kielbiewicz

In honor of:  
 The naming of BROOKE JUDE EZRINE by Evelyn and Gary Michel  
 RABBI WEISS for her spiritual guidance and warmth during and after Lois' illness and passing by David Sacks



MADELINE SHAPIRO becoming a Bat Mitzvah by Stephen and Harriet Shapiro  
 ZACHARY FRIEDMAN-HILL becoming a Bar Mitzvah by Ernest and Stacia Friedman-Hill  
 SIMONE KRAMER becoming a Bat Mitzvah by Jonathan and Terri Kramer

## REFORM JUDAISM IN ISRAEL FUND

In memory of:  
 LEON REITER, husband of Harriet Reiter, by Marge and Bob Winick, Charles and Cecile Plost

## STUFF-A-DUFF (A PROJECT OF TIKKUN OLAM) FUND

In honor of:  
 SHIRLEY LEVIN on her Special Birthday by Paul and Judi Goozh

In memory of:  
 DR. ROBERT KATZ, husband of Elaine Katz, by Paul and Judi Goozh  
 POLLY ETKIND HOCHBERG, sister of Barbara Etkind (Rabbi Jack Luxemburg), by Paul and Judi Goozh  
 BERTIE LEHERER, mother of Debra Asai, by Paul and Judi Goozh

## SUSTAINING (GENERAL) ENDOWMENT FUND

In memory of:  
 POLLY ETKIND HOCHBERG, sister of Barbara Etkind (Rabbi Jack Luxemburg), by Lisa and Stephen Paul, Gail and Michael Kaltman  
 IDA GILLMAN WOLLY, mother of Michael Wolly, by Lisa and Stephen Paul, Gail and Michael Kaltman, Hilde and Colin Alter  
 IRIS LOEV, mother of Marc Loev, by Scott and Jackie Kauff  
 LEON REITER, husband of Harriet Reiter, by Mitchell and Judith Glassman, Colin and Hilde Alter  
 DR. ROBERT KATZ, husband of Elaine Katz, by Shelly and Peter Berman

In honor of:  
 The birth of Leona Rose Weathers, granddaughter of JODY ROSENBLUM and LARRY

ROSENBLUM, by Meyer Glantz and Linda Gerson

## TBA CARES FUND

In memory of:  
 LOIS SACKS, wife of David Sachs, by the Women of Temple Beth Ami  
 ALICE BAUM, wife of Howard Baum, by the Women of Temple Beth Ami

## TIKKUN OLAM (COMMUNITY SERVICE) FUND

In memory of:  
 POLLY ETKIND HOCHBERG, sister of Barbara Etkind (Rabbi Jack Luxemburg), by Lynn and Buzz Karpay, Tina and Jerry Levine, Jim and Sherri Lieberman, Debra and Robert Cowen, Phoebe and Larry Joseph  
 IDA GILLMAN WOLLY, mother of Michael Wolly, by Loretta Feldman  
 SAMUEL MILLER by Holly and Ron Lobel  
 DR. ROBERT KATZ, husband of Elaine Katz, by Stuart and Stephanie Golub  
 IRIS LOEV, mother of Marc Loev, by Lawrence and Leslie Block  
 DAVID D'ALESSIO, father of Steven D'Alessio, by Buzz and Lynn Karpay  
 VAL WOLLY, wife of Mike Wolly, by Paul and Marilyn Yentis

In honor of:  
 The birth of Bennett Dana Kristall, granddaughter of Beth and Jack Rosenthal, by Helen Salzberg  
 SHIRLEY LEVIN'S Special Birthday, by Susan Miller, Walter and Angela Harris  
 FLORENCE FREEDMAN on her 90th Birthday by Donald and Marilyn Goldman

## TIKKUN OLAM (REFUGEES)

In honor of:  
 OUR REFUGEE FAMILIES by Avi and Carrie Halpert, Jonathan and Tracey Haber, Joshua and Allison Siegel, Terry and Linda Vann  
 SANDY AND PHIL MARKS on their 50th Wedding Anniversary by Gail Roe  
 The great work of the Tikkun Olam Committees by Suzanne Hirsch

In memory of:  
 POLLY ETKIND HOCHBERG, sister of Barbara Etkind (Rabbi Jack Luxemburg) by Gail Roe, Walter and Angela Harris  
 SHIRLEY BODOVITZ by James and Katherine Goldgeier

## TORAH FUND FOR ADULT EDUCATION

In honor of:  
 SHIRLEY LEVIN'S Special Birthday by Robin and Tom Temin, Tom and Betty Loggia

In memory of:  
 POLLY ETKIND HOCHBERG, sister of Barbara Etkind, by Robin and Tom Temin  
 LEON REITER, husband of Harriet Reiter, by Robin and Tom Temin, Fredric and Elaine Gillespie, Barry and Sheila Taylor  
 IDA WOLLY, mother of Michael Wolly by Robin and Tom Temin  
 DONALD FOX, father of Linda Lehman, by Robin and Tom Temin

## YOUTH FUND

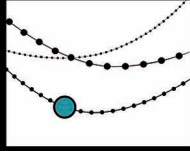
In honor of:  
 PAUL YENTIS' 75TH Birthday by Didi and Michael Sacks  
 JOEY NEUSTADT and LILLY TRIANDAFILOU on their B'nai Mitzvah by Bill Levneson

\*\* as of 9/26/2017

## SHARE WITH US...

We want to know. Please let us know of any significant life cycle event in your family (or the family of a member friend or neighbor), such as a birth, engagement, wedding, illness or death so we can be in touch. Please contact Gail Brodsky, Clergy Assistant, at 301-340-6818 or [gsb@bethami.org](mailto:gsb@bethami.org)

Mention this ad for a one-time discount of 20%.



ARTFULLY DESIGNED

Beautiful Fashion Jewelry, Beautifully Affordable



Wedding Jewelry . Bat Mitzvah Gifts . Birthday Gifts . Holiday Gifts

1776 E. Jefferson St. inside New Wave Salon  
(across from Ring House)

Hours: Wednesday – Saturday 10 am – 4 pm or by appointment

301.908.2774

[www.facebook.com/ArtfullyDesignedJewelry/](http://www.facebook.com/ArtfullyDesignedJewelry/)

## FAMILY & COSMETIC DENTISTRY

Our office is committed to providing personalized, quality care in a relaxed and friendly atmosphere.

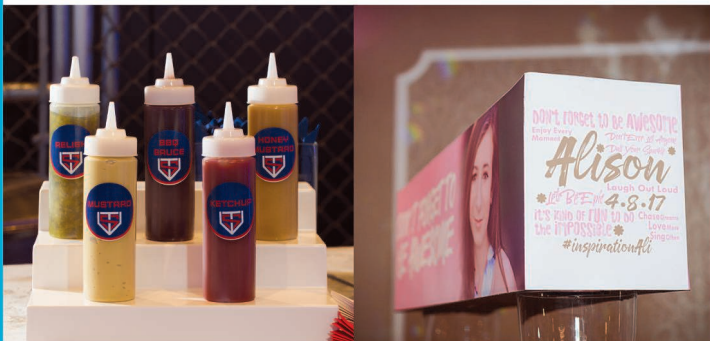


We welcome new patients to our practice.  
**Andrew J. Sorkin, D.M.D., L.L.C.**  
**Mark A. Wallace, D.D.S.**

301-309-0707

1901 Research Blvd., Suite 200  
Rockville, MD 20850

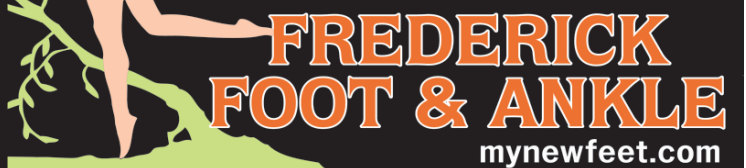
Please visit us on the web at [www.wallacesorkin.com](http://www.wallacesorkin.com)



- |                     |                      |
|---------------------|----------------------|
| Apparel             | Logo Design          |
| Catering & Barware  | Programs             |
| Cocktail Napkins    | Save the Dates       |
| Custom Stamps       | Sign In Boards       |
| Dance Floor Decals  | Snapchat Geo Filters |
| Event Planning      | Step & Repeats       |
| Escort Cards        | Stickers             |
| Favors & Favor Tags | Table Numbers        |

202.302.2001 | [info@iSparkleEvents.com](mailto:info@iSparkleEvents.com)

## Don't Suffer with Foot or Ankle Pain!



Podiatrists • Foot & Ankle Surgeons

Offices in Frederick & Urbana

[www.MyNewFeet.com](http://www.MyNewFeet.com) • (240) 575-2233

Bring in this ad for a FREE tube of BioFreeze





## Capitol Orthodontics

As a Board Certified orthodontist, Dr. Andrew L. Schwartz utilizes the latest technology including self-ligating and ceramic braces, as well as Invisalign® to straighten his patient's teeth. Dr. Schwartz has been designated an Invisalign Premier Elite Provider by Invisalign®, an honor given only to the top 1% of Invisalign® providers.



*Dr. Andrew L. Schwartz is your orthodontic specialist, offering Invisalign and braces for children, teens, and adults.*

Rockville Office  
14955 Shady Grove Road #200  
Rockville, MD 20850  
(301) 610-9909

Washington, DC Office  
1800 K Street, NW #1100  
Washington, DC 20006  
(202) 785-4746

[WWW.CAPITOLORTHODONTICS.COM](http://WWW.CAPITOLORTHODONTICS.COM)

## ADVERTISE YOUR BUSINESS HERE

*Your Community is Looking!*

Call LPi for advertising info  
(800) 477-4574



## UPGRADE TO A

# VIBRANT

Contact us for details

*ad*

## 800-477-4574

## Do you know . . .

**. . . that this publication is produced at no cost to your organization?** The cost of assembling, printing and delivery is carried by the advertisers which appear on these pages. By paying for advertising space, these businesses help your organization communicate with its members. When you patronize these businesses, it proves that advertising in your publication is a good investment which brings a return. Please mention that you saw the company's ad in this publication—solid evidence which encourages advertisers to continue their support!



## LITURGICAL PUBLICATIONS

## Custom Bar/Bat Mitzvah Logos!

Enhancing your Experience with Personalized Customer Service and Collaboration

Logos  
Brochures  
Newsletters  
Web Design  
Photo Enhancements



Leslie Katz - TBA Member  
KatzandDogDesign.com  
lesliekatz1@msn.com  
301-873-7123  
15% Back to Temple Funds



SILCO  
ELECTRIC

301.466.1128

www.silcoelectric.com

adam@silcoelectric.com

Serving DC, MD, and VA

*"Your last impression is my first priority"*

## Celebrate Your Milestone Event

Create a Unique Bar/Bat Mitzvah at VisArts



The modern and versatile **Buchanan Room** is our main event space overlooking Rockville Town Square.

- Size: 2,500 square feet (52'x56') with floor-to-ceiling windows on two full walls
- Capacity: 225 standing reception; 200 seated dinner without dance floor; 170 seated dinner with dance floor

Our **Artist Concourse** art studios and gallery exhibitions welcome guests to your celebration with original art.

**VisArts Rooftop Terrace**, with its majestic aerial view of downtown Rockville, provides a unique perspective for your photo opportunities.

By celebrating in style at VisArts, you are supporting the arts while raising the roof! Twenty percent (20%) of your rental fee is tax-deductible.

**visarts** www.visartscenter.org

155 Gibbs Street • Rockville, MD 20850

For more information, contact Mary Liniger, Events and Sales Director, 301-315-8200 x124 [mliniger@visartscenter](mailto:mliniger@visartscenter)

Mention "Mitzvah Beth Ami" to receive your event discount!

AVAILABLE

FOR A LIMITED TIME

ADVERTISE YOUR  
**BUSINESS**  
**HERE**

Contact **Benjamin Rancman** to place an ad today!  
[brancman@4LPi.com](mailto:brancman@4LPi.com) or (800) 950-9952 x5857



[www.caritravels.com](http://www.caritravels.com)  
[cari@caritravels.com](mailto:cari@caritravels.com)  
**(202) 262-3004**

Bringing you traditional and custom-tailored vacations.

Providing the best services, experience and pricing.



- Family Vacations and Getaways • World Wide Destinations
- Ocean and River Cruising • Escorted Tours

## Fishman Financial Services

"Taking the Stress Out of Planning for Your Retirement"

- Comprehensive Financial Planning
- Intergenerational Planning
  - Tax Planning
  - Tax Preparation

**301-330-9455**

**Free No-Obligation Consultation**

**Lois@fishmanfinancial.com**

**Please visit: [www.fishmanfinancial.com](http://www.fishmanfinancial.com)**

Securities offered through H. Beck, Inc.,  
 a Registered Broker Dealer

Member FINRA/SIPC  
 Bethesda, Maryland, 20817

Investment Advisory and Tax Preparation Services  
 are available through Fishman Financial Services

Lois Fishman, CFP® is a Registered  
 Representative with H. Beck, Inc.  
 which is not affiliated with  
 Fishman Financial Services



**Lois Fishman, CFP®**  
 Certified Financial Planner

*Love and Remembrance, Natural Beauty,  
 A Tradition of Caring.*



## JUDEAN MEMORIAL GARDENS

*Traditional Jewish Burial in the Heart  
 of Montgomery County, Maryland*

16225 Batchellors Forest Road, Olney, MD 20832

301-384-1000 • [www.judeangardens.com](http://www.judeangardens.com)

"Ark" - one of 6 original art works created for Judean by Philip Ratner  
 at the turn of the millennium

**Total Wine & More**



**A PROUD SUPPORTER OF  
 TEMPLE BETH AMI**

Total Wine & More.  
 The selection is incredible.



Total Wine & More is like no other wine store you have ever visited.  
 Each of our superstores carries over 8,000 wines, 3,000 spirits\* and 2,500  
 beers. That's a quarter of a million bottles in every store.

Visit one of our nearby stores:

2 Maryland Wine Superstores  
 LAUREL - CORRIDOR MARKETPLACE\*  
 TOWSON - BELTWAY\*

8 Northern Virginia Wine Superstores  
 MCLEAN | ALEXANDRIA | SPRINGFIELD  
 FAIRFAX | CHANTILLY | STERLING  
 MANASSAS | FREDERICKSBURG

\*Spirits available only in our MD locations.

**Over 105 stores in 16 states!**



Get Social With Us  
[TotalWine.com](http://TotalWine.com)

# Your Local Assisted Living



- Assistance with bathing, grooming & dressing
- Medication administration / management
- Housekeeping & laundry service
- Nutritious meals / healthy snacks
- Recreational, social & spiritual programs

**Bartholomew House**  
6904 River Road  
Bethesda, MD 20817  
**(301) 320-6151**

**Raphael House**  
1515 Dunster Road  
Rockville, MD 20854  
**(301) 217-9116**

**Byron House**  
9210 Kentsdale Dr  
Potomac, MD 20854  
**(301) 469-9400**



## Quality Assisted Living at an Affordable Price

Victory Housing is the nonprofit housing development arm of the Archdiocese of Washington.



*Victory  
Housing*

[www.victoryhousing.org](http://www.victoryhousing.org)

## TaMORRIS

GRAPHIC DESIGN  
INTERIOR DECORATING  
LANDSCAPE DESIGN  
& MORE

*Design*

### Logo Design & Corporate Identity Packages

*Make your company stand out from the crowd and look professional!*

### Custom Invitation Design and Event Materials

*Birthday Parties, Bar-Mitzvahs, Christenings, Baptisms,  
Communions, Weddings, or Holiday Parties*

### \*\*\* Holiday and New Year's Cards \*\*\*

*Make your card this year personal and unique!*

### Specialty Products

*Custom Printed T-shirts, Office Products, &  
Promotional items for your Office, Team, or other group*

### Interior Design Services

*Color Consultation, Full Decorating Services,  
Custom Window Treatments, Pillows and Upholstery*

TAMARA A. MORRIS, *Certified Interior Decorator (CID)*  
240.418.7371 • TAMORRIS.DESIGN@GMAIL.COM  
TAMORRISDESIGN.WIX.COM/TAMORRISDESIGN



**HOLLY M. GROSS M.D.**  
**BOARD CERTIFIED**  
**OPHTHALMOLOGISTS**  
**Dr. Holly Gross      Dr. David Yeh**

COMPREHENSIVE EYE CARE  
CATARACT SURGERY  
LASER & REFRACTIVE SURGERY  
CORNEAL SURGERY • GLAUCOMA  
DIABETES • DRY EYES

FREDERICK OFFICE  
5283 Corporate Drive  
Suite 201  
Frederick, MD 21703  
301-662-4545

ROCKVILLE OFFICE  
9420 Key West Avenue  
Suite 405  
Rockville, MD 20850  
855-549-2020 toll-free

[www.drhollygross.yourmd.com](http://www.drhollygross.yourmd.com)



Everywhere You Want to Be

LONG & FOSTER REAL ESTATE LUXURY HOMES CHRISTIE'S INTERNATIONAL REAL ESTATE

Named one of the Area's Top Realtors in Washingtonian and Bethesda Magazine, and one of America's Best Real Estate Agents in the Wall Street Journal



Margie Halem

Temple & WBTA Member

Licensed in Maryland, Virginia & Washington, D.C.

301.775.4196 c | 301.907.7600 o

Margie@LNF.com | MargieHalemGroup.com

Bethesda Gateway Office | Long & Foster Real Estate



Capitol Orthodontics

As a Board Certified orthodontist, Dr. Andrew L. Schwartz utilizes the latest technology including self-ligating and ceramic braces, as well as Invisalign® to straighten his patient's teeth.



Dr. Andrew L. Schwartz is your orthodontic specialist, offering Invisalign and braces for children, teens, and adults.



Rockville Office 14955 Shady Grove Road #200 Rockville, MD 20850 (301) 610-9909

Washington, DC Office 1800 K Street, NW #1100 Washington, DC 20006 (202) 785-4746

WWW.CAPITOLORTHODONTICS.COM

Morgan Stanley



Ronnie Lapinsky Sax CPM®

Senior Portfolio Management Director Financial Advisor 7500 Old Georgetown Rd, 10th Fl Bethesda, MD 20814 301-657-6368 r.lapinkysax@morganstanley.com NMLS# 1275710

© 2016 Morgan Stanley Smith Barney LLC. Member SIPC. CRC1596709

Monuments & Memorials

\$100

GIVE YOUR FAMILY THE GIFT OF PEACE OF MIND towards a pre-paid arrangement or memorial. Bring into your appointment.

MONUMENTS

Sagel Bloomfield is owned and operated by Al Bloomfield & Ed Sagel



Ask us about special funeral plans available for Temple Beth Ami members only.



VISIT OUR NEWLY REMODELED OFFICE - 1091 ROCKVILLE PIKE, ROCKVILLE, MD 20852 OR ONLINE WWW.SAGELBLOOMFIELD.COM



AL AND HIS FAMILY ARE PROUD MEMBERS OF TEMPLE BETH AMI

FOLLOW US ON FACEBOOK SAGELBLOOMFIELD FUNERALS

301.340.1400

MEMORIALS



# Chadashot

Temple Beth Ami  
14330 Travilah Road  
Rockville, Maryland  
20850-3527

NON PROFIT ORG.  
U.S. POSTAGE  
PAID  
SUBURBAN MD 20898  
PERMIT 761

**RETURN SERVICE REQUESTED**

NOVEMBER 2017 CHESHVAN/KISLEV 5778

## TEMPLE BETH AMI Chadashot

### TEMPLE STAFF

SENIOR RABBI	GARY POKRAS
RABBI	BAHT YAMEEM WEISS
CANTOR	LARRY ESCHLER
CANTORIAL SOLOIST	JOSHANA ERENBERG
DIRECTOR OF EDUCATION	KIM ROBERTS
NURSERY SCHOOL DIRECTOR	PAULA SAYAG
EXECUTIVE DIRECTOR	JANICE ROSENBLATT
PROGRAM DIRECTOR	SHELLY LENKIN GORDON
RABBI EMERITUS	JACK LUXEMBURG
CANTOR EMERITAS	SUE ROEMER z"l
DIRECTOR OF EDUCATION EMERITAS	PHYLLIS GREENE
NURSERY SCHOOL DIRECTOR EMERITAS	KAREN GREENBERG
TEMPLE ADMINISTRATOR/EDITOR	DIANE FERRARO
TEMPLE ADMINISTRATIVE ASSISTANT	IRENE PAPAMANOLIS
ACCOUNTING	JOANNE DIAMOND
ACCOUNTING	ESTHER ABELSON
CLERGY ASSISTANT	SUSAN NEUMANN
CLERGY ASSISTANT	GAIL BRODSKY
TBA HIGH SUPERVISOR, GRADES 8 -12	LORI FEIN
L'MALA SUPERVISOR, GRADES 3 - 7	LISA GOODMAN
CURRICULUM SPECIALIST K-12	SHARON TASH
L'MALA SUPERVISOR K - 2	LORI FEIN
L'MATA SUPERVISOR GRADES 3 -6/KAYITZ	ELAINE PRIGAL
REL. SCH. OFFICE MANAGER/REGISTRAR	BOBBIE CHAIT
NURSERY SCHOOL ADMINISTRATIVE ASST.	JILL FINCI
NURSERY SCHOOL SPECIAL PROJECTS COORDINATOR	ELLEN BORTZ

### BOARD OF DIRECTORS

PRESIDENT	LAURA ROSE
1ST VICE PRESIDENT	BUZZ KARPAY
2ND VICE PRESIDENT	ROBERT OSHINSKY
3RD VICE PRESIDENT	LAUREN BOGART
TREASURER	TAMMY ROBERTS
ASSISTANT TREASURER	MATT ROSENSTOCK
FINANCIAL SECRETARY	KAL MIGLER
ASSISTANT FINANCIAL SECRETARY	BURT FELDMAN
RECORDING SECRETARY	JENNIFER WINICK MILLER
GENERAL COUNSEL	MICHAEL MARYN
IMMEDIATE PAST PRESIDENT	TOM TEMIN
PAST PRESIDENT	BENITA MARCUS
WOMEN OF TBA REPRESENTATIVE	JACKIE MANIS
BROTHERHOOD PRESIDENT	ROB SHAPIRO
MEMBERS-AT-LARGE:	
STACY DERRICK, SUE FIALKOFF, BETH GELFMAN, EDWARD GOODMAN,	
JERRY LEVINE, MICHAEL MANIS, DAN ROSENSTEIN, NANCY SHAPIRO	
MONICA SLATER, JONATHAN WESTIN	

### JSSA Liaison is Here for You

Through our special relationship with JSSA, TBA members are able to receive free and confidential consultation on family and mental health issues including parenting children of all ages and aging parents. Roberta Drucker is a Licensed Clinical Social Worker and also earned a BA in Psychology, and Early Childhood, Elementary and Special Education. Her specialized training and experience include the treatment of anxiety, OCD, and other mood issues, ADHD, learning disabilities, families with special needs, parenting, couples and family therapy, aging and bereavement, and intergenerational family therapy. During her tenure as Director of JSSA's Resettlement Program, she provided services to families, and consultation to staff in a variety of settings, including Jewish Day Schools, public schools, pre-schools, and religious schools. Please contact Roberta at [rdrucker@jssa.org](mailto:rdrucker@jssa.org) or 301-610-8369 for free confidential consultation.

Temple Beth Ami is a caring, inclusive congregational community united by Torah, guided by the philosophy of reform Judaism and committed to the Jewish people. We provide the foundation and resources to our congregants to engage in life-long Jewish learning, the pursuit of spiritual growth and the promotion of social justice for all.